

2022 Ford F-350 Super Duty Lariat 4x4

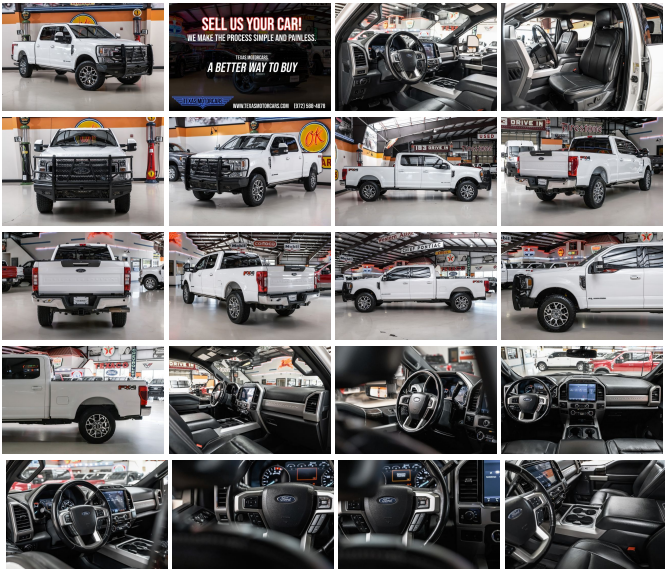
View this car on our website at mrcarguys.com/7297308/ebrochure



Our Price **\$58,777**

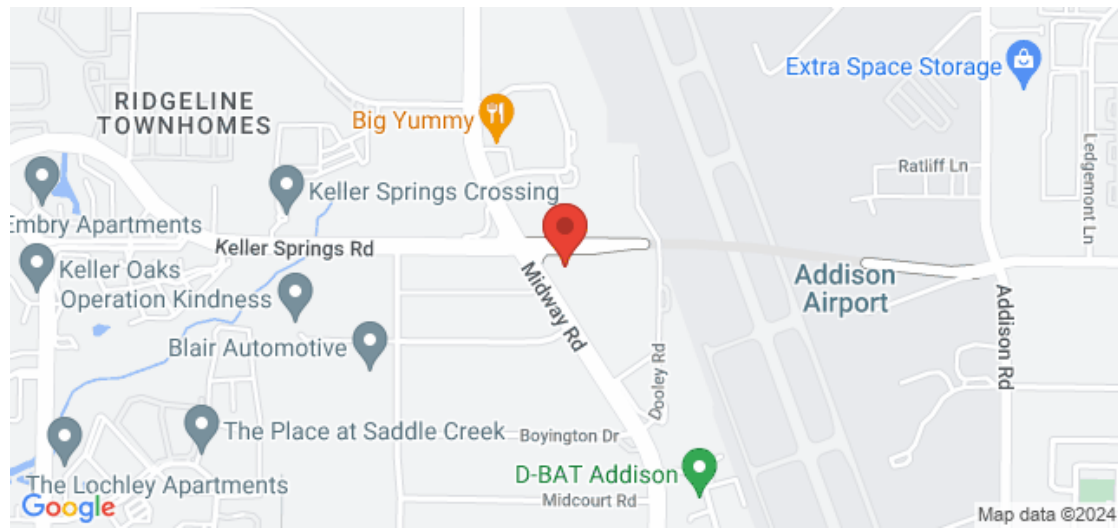
Specifications:

Year:	2022
VIN:	1FT8W3BT4NEC21539
Make:	Ford
Stock:	C21539
Model/Trim:	F-350 Super Duty Lariat 4x4
Condition:	Pre-Owned
Body:	Pickup Truck
Exterior:	[AZ] Star White Metallic Tri-Coat
Engine:	Power Stroke 6.7L Biodiesel Turbo V8 475hp 1050ft. lbs.
Interior:	Black Leather
Transmission:	10-Speed Shiftable Automatic
Mileage:	78,852
Drivetrain:	4 Wheel Drive



2022 Ford F-350 Super Duty Lariat 4x4 The 2022 Ford F-350 Super Duty Lariat 4x4 redefines the standards of heavy-duty trucks. Draped in a pristine Star White Metallic Tri-Coat paint, this striking machine is a beacon of power and prestige. The exterior boasts 20-inch bright machined cast aluminum wheels with magnetic pockets that not only add to its magnetic appeal but also promise a ride that's as smooth as it is commanding. The opulent black leather interior speaks volumes of the Lariat's commitment to luxury. The cabin is your sanctuary, offering a harmonious blend of comfort and functionality. Power Deployable Running Boards welcome you, paving the way for an effortless entry into your throne on wheels. A Power Stroke 6.7L Biodiesel Turbo V8 engine is what makes this tiger roar. Paired with a 10-Speed Shiftable Automatic transmission, this truck delivers power and precision whether you're conquering the concrete jungle or taming the rugged trails. And with the FX4 Off-Road Package, including hill descent control and skid plates, your adventurous spirit will know no bounds. The Lariat Ultimate Package elevates your driving experience to celestial heights, offering amenities such as ambient lighting, a heated steering wheel with memory and audio controls, and intelligent access with push-button start. The power heated/cooled driver and passenger seats with driver-side memory cradle you in comfort, while the PowerScope trailer tow mirrors ensure that your precious cargo is always in view. The 5th Wheel/Gooseneck Hitch Prep Package, Gooseneck Hitch Kit, and Upfitter Switches testify to this truck's readiness for any task, no matter how daunting. The Rear CHMSL Camera is your vigilant co-pilot, providing a clear view of your surroundings, while the Tough Bed Spray-In Bedliner stands guard against the elements, ensuring your truck remains as pristine as the day you took it home. Crowned with accolades from J.D. Power and Associates's Initial Quality Study, this

Our Location :



Installed Options

Interior

- Air filtration- Power outlet(s): 12V front- Clock- Digital odometer
- External temperature display- Powertrain hour meter- Rear seat folding: folds up
- Rear seat type: 60-40 split bench

Exterior

- Tailgate: lift assist- Towing mirrors- Spare wheel type: steel
- Tire Pressure Monitoring System- Front wipers: variable intermittent
- Solar-tinted glass: front