

## 2012 Ford F-350 Super Duty XL

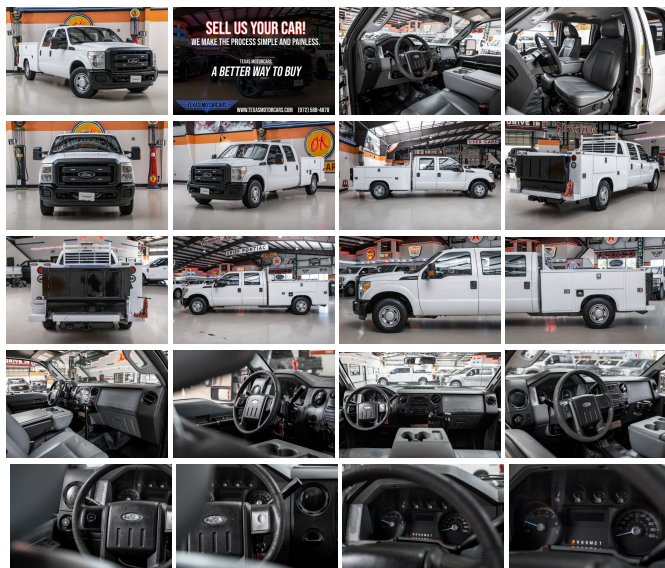
View this car on our website at [mrcarguys.com/7297303/ebrochure](http://mrcarguys.com/7297303/ebrochure)



Our Price **\$24,982**

### Specifications:

<b>Year:</b>	2012
<b>VIN:</b>	1FT8W3A69CEB43350
<b>Make:</b>	Ford
<b>Stock:</b>	B43350
<b>Model/Trim:</b>	F-350 Super Duty XL
<b>Condition:</b>	Pre-Owned
<b>Body:</b>	Pickup Truck
<b>Exterior:</b>	[Z1] Oxford White
<b>Engine:</b>	6.2L Flex Fuel V8 316hp 397ft. lbs.
<b>Interior:</b>	Steel Gray Vinyl
<b>Transmission:</b>	6-Speed Shiftable Automatic
<b>Mileage:</b>	105,410
<b>Drivetrain:</b>	Rear Wheel Drive

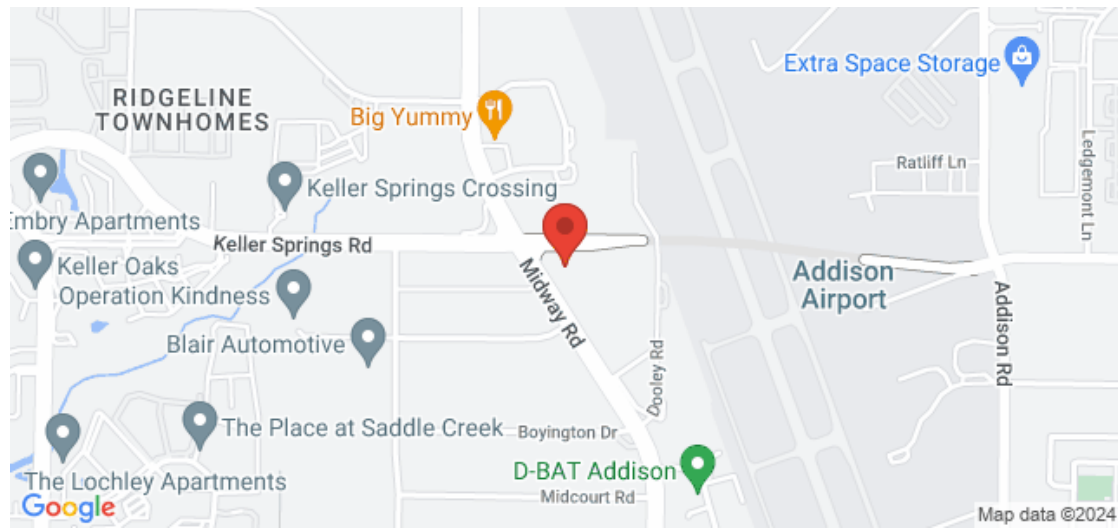


2012 Ford F-350 Super Duty XL This 2012 Ford F-350 Super Duty XL is a powerhouse of capability wrapped in a classic white exterior. With a mere 105,410 miles on the odometer, this full-size pickup is ready to take on the toughest of tasks without breaking a sweat. The heart of this beast is a potent 6.2L Flex Fuel V8 engine, delivering a robust 316 horsepower and a hefty 397 foot-pounds of torque, ensuring that no job is too big. Step inside to find a practical and resilient gray vinyl interior that stands up to the rigors of work and play. The interior is not just tough but also spacious, featuring a 60-40 split bench rear seat that provides ample room for passengers or cargo. When it comes to convenience, the Power Equipment Group has you covered with an array of features such as power door locks, one-touch driver side window, and heated manual telescoping trailer tow mirrors with integrated clearance lamps and turn signals, designed to make your driving experience as seamless as possible. Towing is a breeze with the included Trailer Brake Controller, which is compatible with select electric over hydraulic brakes, and the 7-pin trailer wiring ensures that connecting your trailer is straightforward and secure. The 3.73 Non-Limited Slip Axle Ratio provides balanced performance for both towing and everyday driving. This F-350 doesn't just work hard; it's also a winner, boasting accolades such as Edmunds's Best Retained Value and J.D. Power's APEAL Study Top Models in Segment. Kelley Blue Book has recognized this model multiple times for its outstanding exterior and interior design, family-friendliness, resale value, and ruggedness. Seize the opportunity to own a piece of Ford's legacy of durable and dependable trucks. The 2012 Ford F-350 Super Duty XL is not just a vehicle; it's a trusted partner for work, adventure, and everything in between. Don't miss out on the chance to make this award-winning, multi-faceted champion yours today. This vehicle has been

2012 Ford F-350 Super Duty XL

Mr Car Guys - 214-732-7859 - View this car on our website at [mrcarguys.com/7297303/ebrochure](http://mrcarguys.com/7297303/ebrochure)

### Our Location :



2012 Ford F-350 Super Duty XL

Mr Car Guys - 214-732-7859 - View this car on our website at [mrcarguys.com/7297303/ebrochure](http://mrcarguys.com/7297303/ebrochure)

### Installed Options

#### Interior

- Armrests: rear center folding with storage- Power steering
- Steering wheel: tilt and telescopic- Multi-function display- Powertrain hour meter
- Trip odometer- Rear seat folding: split- Rear seat type: 60-40 split bench

#### Exterior

- Pickup bed light- Towing mirrors- Spare tire size: full-size matching
- Tire Pressure Monitoring System

Mr Car Guys

[mrcarguys.com](http://mrcarguys.com)

214-732-7859

16000 Midway Rd.

Addison, TX 75001

© 2024 AutoRevo - All rights reserved. - Powered by AutoRevo