

2022 Ford F-250 Super Duty XL 4X4

View this car on our website at texasmotorcars.com/7297247/ebrochure



Our Price **\$31,777**

Specifications:

Year:	2022
VIN:	1FT7X2B67NED00815
Make:	Ford
Stock:	D00815
Model/Trim:	F-250 Super Duty XL 4X4
Condition:	Pre-Owned
Body:	Pickup Truck
Exterior:	[Z1] Oxford White
Engine:	6.2L Flex Fuel V8 385hp 430ft. lbs.
Interior:	Medium Earth Gray Cloth
Transmission:	6-Speed Shiftable Automatic
Mileage:	113,815
Drivetrain:	4 Wheel Drive

2022 Ford F-250 Super Duty XL 4X4

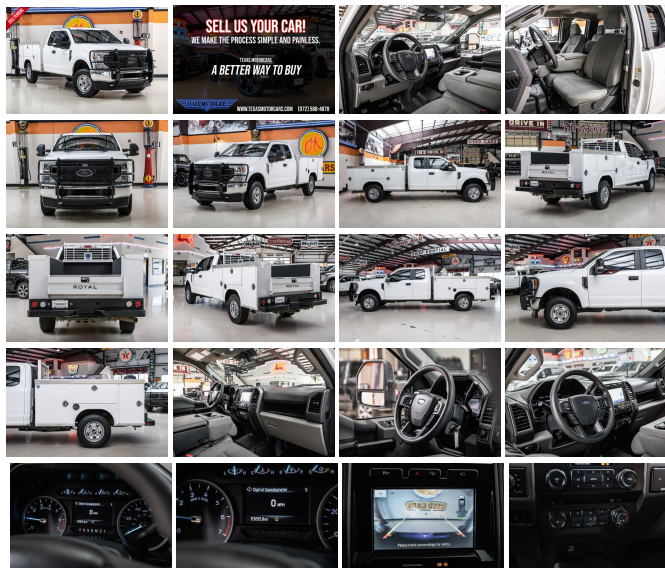
The 2022 Ford F-250 Super Duty XL 4X4 is a truck that's as versatile as it is powerful. Cloaked in a pristine white exterior, this Super Duty is a beacon of capability, ready to tackle any job with grace and vigor. The interior, dressed in durable gray cloth, is a haven of comfort and practicality, designed to support you through the longest hauls and the toughest tasks.

Under the hood, is the core of this monster - a 6.2L Flex Fuel V8 engine, boasting a formidable 385 horsepower and 430 ft. lbs. of torque. This powerplant is mated to a responsive 6-Speed Shiftable Automatic transmission, offering you the control you need to masterfully navigate both highways and rugged paths alike.

The FX4 Off-Road Package equips you with hill descent control, skid plates, and specially tuned shocks, ensuring that you remain unshaken no matter the terrain. The unique FX4 Off-Road box decal is not just a statement, it's a promise of adventure and reliability.

The Power Equipment Group elevates your experience with a suite of features designed to offer convenience and security. Power door locks, including a power tailgate lock, remote keyless entry, and a SecuriLock passive anti-theft system, ensure that your Super Duty is as secure as it is accessible. The addition of power windows and power, heated mirrors with integrated signals adds a touch of ease and luxury to your daily operations.

Stay ahead of the curve with the cutting-edge SYNC 3 Communications and Entertainment System. Voice recognition technology, 911 assist, AppLink, and smart charging USB ports are just the beginning. With Apple CarPlay and Android Auto integration, your truck becomes a



Apple CarPlay and Android Auto integration, your truck becomes an extension of your digital life, keeping you connected and in control. The Wi-Fi hotspot and FordPass Connect app compatibility, including remote engine start, make this Super Duty a mobile command center.

With the option for an extended warranty, this Super Duty is not just a purchase; it's an investment in power, performance, and peace of mind. Unleash the potential of the 2022 Ford F-250 Super Duty XL 4X4 – a powerhouse that's ready to conquer, connect, and impress.

This vehicle has been reduced at below wholesale prices.

READY for work and play! Give us a call today!

Can't make it in? We offer shipping all over the United States. Ask your salesperson for shipping quotes.

Financing is available with competitive rates! Get pre-approved in no time by filling out a credit application on the finance section of our website! We also offer industry leading, highly rated warranty options so you can select one perfect for your specific vehicle needs.

All vehicles are priced for QUICK SALE. Call us today to see how easy it is to buy a vehicle at Texas Motorcars.

Texas Motorcars in Addison is a family owned and operated business. We are committed to delivering the best possible service!

Se habla Español!

Texas Motorcars "A Better Way To Buy!"

2022 Ford F-250 Super Duty XL 4X4

Texas Motorcars - 972-521-7788 - View this car on our website at [texasmotorcars.com/7297247/ebrochure](https://www.texasmotorcars.com/7297247/ebrochure)

Vehicle History Report : as Of 05/08/2024

CARFAX

Snapshot

2022 FORD F-250 SUPER DUTY XL



No accidents or damage reported to CARFAX



8 Service history records



At least 1 open recall



2 Previous owners



Types of owners: Corporate, Personal



113,815 Last reported odometer reading



FREE CARFAX Report

See the full CARFAX Report for additional information

*carfax Snapshot is a reflection of available information on the date the report was pulled. carfax is constantly being updated with new information and is subject to change at any time.

Our Location :



2022 Ford F-250 Super Duty XL 4X4

Texas Motorcars - 972-521-7788 - View this car on our website at texasmotorcars.com/7297247/ebrochure

Installed Options

Interior

- Air filtration- Front air conditioning- Power outlet(s): 12V front- Power steering
- Steering wheel: tilt and telescopic- Clock- Digital odometer- External temperature display
- Powertrain hour meter- Front seat type: 40-20-40 split bench - Rear seat folding: folds up
- Rear seat type: 60-40 split bench

Exterior

- Pickup bed light- Tailgate: lift assist- Towing mirrors- Spare wheel type: steel
- Tire Pressure Monitoring System- Wheels: painted steel
- Front wipers: variable intermittent- Solar-tinted glass: front

Option Packages

Factory Installed Packages

["FX4 Off-Road Package", "Includes hill descent control, transfer case and fuel tank skid plates, off-road tuned shocks, and unique FX4 Off Road box decal."]

\$495

["Power Equipment Group", "Includes accessory delay, power door locks, power tailgate lock, remote keyless entry, SecuriLock passive anti-theft system, inclination/intrusion sensors, power front row windows with one-touch up and down, power second row windows, manually telescoping two-way folding trailer tow mirrors with power and heated glass, heated convex spotter mirror, integrated clearance lamps and turn signals, and upgraded door trim panel. Deletes passenger side lock cylinder."]

\$1,100

["SYNC 3 Communications and Entertainment System", "Includes SYNC 3 enhanced voice recognition communications and entertainment system with 911 assist and AppLink, Apple CarPlay, Android Auto, 110V/400W outlet, 8 In. LCD touchscreen in center stack with swiping, two smart charging USB ports, compass and clock display."]

\$450

["XL Value Package", "Includes chrome front and rear bumpers, bright chrome hub covers and center ornaments, and cruise control with steering wheel mounted controls."]

\$395

["3.73 Electronic Locking Axle Ratio"]

\$430

["Trailer Brake Controller", "Includes TowCommand integrated trailer brake controller and smart trailer tow connector (compatible with select electric over hydraulic brakes. 7 and 4-way combo trailer tow socket and bracket deleted with 66D Pickup Box Delete.)"]

\$300

["Upfitter Switches", "Includes six (6) switches located in overhead console."]

\$165

["Rear CHMSL Camera", "Includes LED center high-mounted stop lamp with cargo light and rear video camera with display in center stack screen."]

\$200

["Reverse Sensing System"]

\$245

Option Packages Total

\$3,780

972-521-7788

16000 Midway Rd

Addison, Texas 75001

© 2024 AutoRevo - All rights reserved. - Powered by AutoRevo