

2022 Tesla Model S Plaid

View this car on our website at autosourcehawaii.com/7296866/ebrochure

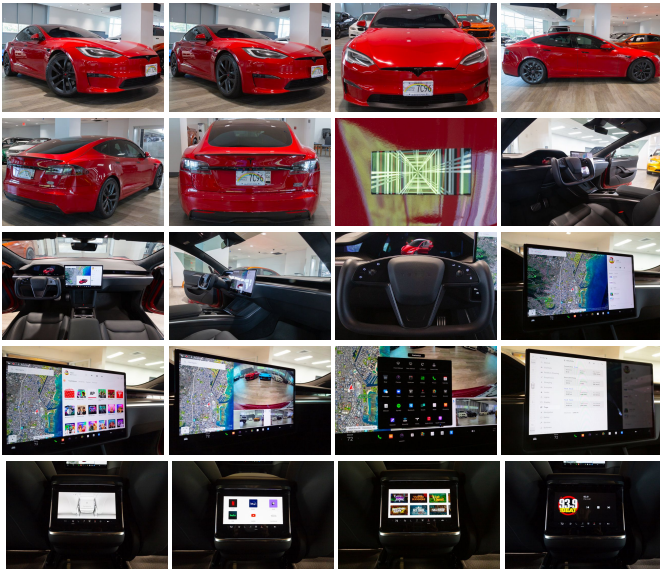


Our Price **\$79,995**

Retail Value **~~\$89,995~~**

Specifications:

Year:	2022
VIN:	5YJSA1E64NF468833
Make:	Tesla
Stock:	JG80832A
Model/Trim:	Model S Plaid
Condition:	Pre-Owned
Body:	Sedan
Exterior:	Pearl White Multi-Coat
Engine:	Electric 1020hp
Interior:	Black Leather
Transmission:	1-Speed Direct-Drive Automatic
Mileage:	4,390
Drivetrain:	All Wheel Drive
Economy:	City 119 / Highway 112



Prepare to be propelled into the future of driving with the awe-inspiring 2022 Tesla Model S Plaid, a paragon of electric performance and luxury that's poised to redefine your concept of automotive excellence. With a mere 4,390 miles on the odometer, this nearly new marvel stands as a testament to cutting-edge innovation and sustainable prowess, ready to deliver an exhilarating driving experience unlike any other.

At the heart of this electric titan lies an astonishingly powerful engine, delivering a staggering 1020 horsepower that ensures your journey is not just a commute, but a statement of dominance on the road. Coupled with a seamless 1-Speed Direct-Drive Automatic transmission, the Model S Plaid offers instant torque and acceleration that can only be described as otherworldly, catapulting you from 0 to 60 mph in a scarcely believable 2 seconds.

Step inside and be enveloped in an oasis of luxury with the Model S Plaid's sophisticated other leatherette interior, where comfort and technology converge to create an environment that's both inviting and innovative. The expansive 17-inch infotainment screen stands as the centerpiece of connectivity, offering intuitive touch screen navigation with real-time traffic data to effortlessly guide you to your destination. Voice-operated hands-free phone call integration and electronic messaging assistance ensure your focus remains unbroken on the exhilarating drive ahead.

Entertainment is redefined with an audio system that transforms your cabin into a private concert hall. With 960 watts powering 22 speakers and a sublime subwoofer, every note is rendered with crystal-clear precision, enveloping you in a soundscape that's as rich and detailed as

the drive itself. Whether you're streaming through the included SiriusXM satellite radio or your favorite internet radio app like Slacker, the digital sound processing promises an auditory experience that's as revolutionary as the vehicle itself.

Rear passengers are not forgotten, as they can indulge in their own visual entertainment on an 8-inch video monitor, ensuring that every journey is as enjoyable for them as it is for the driver. The 2022 Tesla Model S Plaid is not just a car; it's a mobile sanctuary for the senses.

The accolades speak for themselves. Kelley Blue Book's Brand Image Awards have recognized Tesla as the Best Overall Luxury Brand, Best Value Luxury Brand, and Most Refined Luxury Brand, affirming the Model S Plaid's position at the pinnacle of premium electric vehicles.

This Tesla Model S Plaid isn't just a car; it's a statement—a testament to the power of electric propulsion, the allure of uncompromised luxury, and the promise of a sustainable future. It's an invitation to join an exclusive club of discerning drivers who demand nothing but the best. Don't just take the next step—leap into the future with the 2022 Tesla Model S Plaid, and experience the thrill of driving reimagined.

2022 Tesla Model S Plaid

Autosource Hawaii - (808) 597-8522 - View this car on our website at autosourcehawaii.com/7296866/ebrochure

Vehicle History Report : as Of 05/21/2024

CARFAX

Snapshot

2022 TESLA MODEL S PLAID



No accidents or damage reported to CARFAX



CARFAX 1-Owner vehicle



Personal lease vehicle



Last owned in Hawaii



6 Detailed records available



4,390 Last reported odometer reading



FREE CARFAX Report

See the full CARFAX Report for additional information

*carfax Snapshot is a reflection of available information on the date the report was pulled. carfax is constantly being updated with new information and is subject to change at any time.

Our Location :



2022 Tesla Model S Plaid

Installed Options

Interior

- Air filtration- Front air conditioning: automatic climate control
- Front air conditioning zones: dual- Rear air conditioning: automatic climate control
- Center console trim: carbon fiber- Dash trim: carbon fiber- Door trim: carbon fiber
- Floor mat material: carpet- Floor mats: front- Foot pedal trim: alloy
- Headliner trim: faux suede- Heated steering wheel- Steering wheel trim: leatherette
- Adaptive cruise control- Adaptive stop and go cruise control: fully automated
- Ambient lighting- Cargo area light- Cargo cover: hard- Easy entry: power driver seat
- Memorized settings: 10 driver- Multi-function remote: proximity entry system
- Power outlet(s): 12V front- Power steering: variable/speed-proportional
- Rearview mirror: auto-dimming- Steering wheel: power tilt and telescopic
- Universal remote transmitter: Homelink - garage door opener
- Wireless charging station: front- Clock- Compass- Customizable instrument cluster
- Digital odometer- External temperature display- Instrument cluster screen size: 12.3 in.
- Multi-function display- Trip odometer- Driver seat: heated
- Driver seat power adjustments: 12- Front seat type: bucket - Passenger seat: heated
- Passenger seat power adjustments: 12- Rear seat: heated- Rear seat folding: split
- Rear seat type: 60-40 split bench - Upholstery: leatherette

Exterior

- Front bumper color: body-color- Mirror color: body-color- Rear spoiler: lip
- Rear spoiler color: carbon fiber- Rear trunk/liftgate: power operated
- Daytime running lights: LED- Exterior entry lights: approach lamps- Front fog lights: LED
- Taillights: LED- Side mirror adjustments: power- Side mirrors: auto-dimming
- Moonroof / Sunroof: panoramic- Tire Pressure Monitoring System
- Wheels: aluminum alloy- Front wipers: rain sensing- Heated windshield washer jets
- Heated windshield wiper rests- Tinted glass- Window defogger: rear