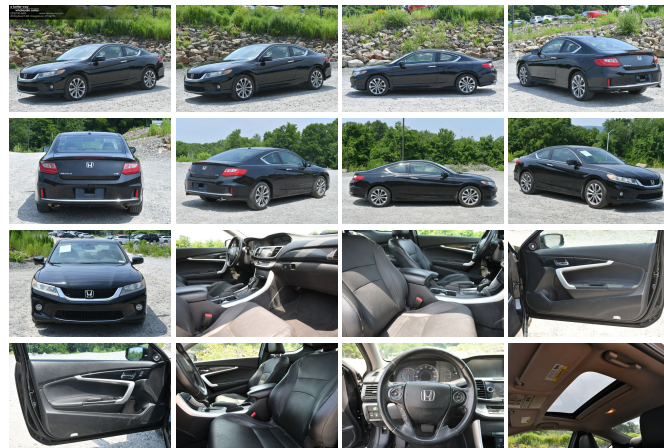


2015 Honda Accord EX-L V6

View this car on our website at abwautos.com/7296860/ebrochure



a better way
wholesale autos



Our Price **\$11,495**

Specifications:

Year:	2015
VIN:	1HGCT2B80FA002998
Make:	Honda
Stock:	2998A
Model/Trim:	Accord EX-L V6
Condition:	Pre-Owned
Body:	Coupe
Exterior:	Black
Engine:	3.5L V6 278hp 252ft. lbs.
Interior:	Black Leather
Transmission:	Automatic
Mileage:	86,500
Drivetrain:	Front Wheel Drive
Economy:	City 21 / Highway 32

- Sleek 2015 Honda Accord EX-L V6 with a sophisticated black exterior and luxurious black leather interior.
- Low mileage at just 86,500 miles, paired with a powerful 3.5L V6 engine offering 278 horsepower for a dynamic driving experience.
- Loaded with premium features including a proximity entry system, lane deviation sensors, and a multi-view rear camera for enhanced safety and convenience.
- Enjoy modern comforts such as dual-zone automatic climate control, Bluetooth connectivity, and push-button start.
- Recognized with multiple awards for value, family-friendliness, and comfort, ensuring confidence in your investment.

Discover the epitome of elegance and performance with the 2015 Honda Accord EX-L V6, a vehicle that combines a sleek black exterior with a sumptuous black leather interior, designed to envelop you in luxury and style. With a mere 86,500 miles on the odometer, this Accord is primed to deliver the thrill of the road for many years to come.

Under the hood lies a potent 3.5L V6 engine, boasting an impressive 278 horsepower and 252 ft-lbs of torque, ensuring that every press of the accelerator is met with a responsive and exhilarating ride. The smooth automatic transmission offers seamless shifts, allowing you to focus on the joy of driving.

Step inside and be greeted by a host of manufacturer options and packages that cater to your comfort and safety. The leather upholstery is both durable and elegant, while the aluminum alloy wheels add a touch of sophistication to the vehicle's profile. The multi-function remote with proximity entry system simplifies access to your vehicle, ensuring

you never have to fumble for keys again.

Safety is paramount in the 2015 Honda Accord EX-L V6, equipped with advanced features such as blind spot safety with camera display and lane deviation sensors. These cutting-edge technologies work in concert to keep you aware of your surroundings and assist in preventing potential incidents on the road.

The driver's seat offers 10 power adjustments, allowing you to find the perfect driving position with ease, while the leather-trimmed steering wheel provides a comfortable grip for those long journeys. Dual-zone automatic climate control ensures that both you and your passengers can tailor the environment to your preferences, creating a harmonious cabin atmosphere.

Connectivity is at your fingertips with wireless data link Bluetooth, auxiliary audio input, and the convenience of push-button start. Stay entertained and informed with the internet radio app Pandora, and enjoy your favorite tunes with crystal clear sound quality.

The 2015 Honda Accord EX-L V6 is not just a car; it's a statement of success and a testament to your discerning taste. It's no surprise that this model has garnered a plethora of awards from Edmunds and Kelley Blue Book, highlighting its exceptional retained value, fuel efficiency, comfort, and overall brand excellence.

When you choose this Honda Accord, you're not just purchasing a vehicle; you're investing in a lifestyle of sophistication, reliability, and unmatched driving pleasure. Don't miss the opportunity to make this award-winning car your own and experience the pinnacle of automotive craftsmanship.

For sale at A Better Way Wholesale Autos - 2023 DealerRater Consumer Satisfaction Award winner - Connecticut's highest volume independent auto dealer! We have the area's largest selection of pre-owned vehicles at the lowest prices available, over 700 in stock to choose from! Financing for all credit tiers and extended warranties available. Please contact our sales department for more information about this vehicle or the rest of our inventory. Call 203-720-5600, view our website www.abwautos.com, or visit our showroom in Naugatuck, CT. Open 7 days a week!

2015 Honda Accord EX-L V6

A Better Way Wholesale Autos-CT - 203-720-5600 - View this car on our website at abwautos.com/7296860/ebrochure

Our Location :



2015 Honda Accord EX-L V6

A Better Way Wholesale Autos-CT - 203-720-5600 - View this car on our website at abwautos.com/7296860/ebrochure

Installed Options

Interior

- Air filtration- Front air conditioning: automatic climate control
- Front air conditioning zones: dual- Floor mat material: carpet- Floor mats: front
- Shift knob trim: leather- Steering wheel trim: leather- Cargo area light- Cruise control
- Memorized settings: 2 driver- Multi-function remote: proximity entry system
- Power outlet(s): 12V front- Power steering- Push-button start
- Rearview mirror: auto-dimming- Steering wheel: tilt and telescopic
- Universal remote transmitter: Homelink - garage door opener - Clock- Compass
- Digital odometer- External temperature display- Multi-function display- Trip odometer
- Driver seat: heated- Driver seat power adjustments: 10- Front seat type: bucket
- Passenger seat: heated- Rear seat folding- Rear seat type: bench- Upholstery: leather

Exterior

- Door handle color: chrome- Exhaust: dual tip- Front bumper color: body-color
- Mirror color: body-color- Daytime running lights: LED- Front fog lights
- Side mirrors: heated- Spare wheel type: steel- Tire Pressure Monitoring System
- Wheels: aluminum alloy- Front wipers: variable intermittent- Power windows
- Window defogger: rear

REGARDING STATE STATUTE AND REGULATORY COMPLIANCE: THIS ADVERTISEMENT DOES NOT CONSTITUTE AN OFFER TO SELL OR PURCHASE A VEHICLE. AN OFFER FOR SALE OR PURCHASE MAY ONLY BE MADE IN PERSON IN OUR SHOWROOM VIA THE PRESENTATION OF A PURCHASE ORDER, COMPLETED IN ITS ENTIRETY. Some vehicles may still be in process and therefore may not be available for immediate sale. Included Accessories: We try our best to procure books and extra keys from the previous owners. With that said, we do not always have spare keys, books, floor mats, or other accessories for every vehicle. In most cases we can only provide the accessories that are photographed. For instance, if we show a navigation display with a map, there is a navigation disc with the car. If you do not see it, assume the item is not included. We encourage you to email or call us if you are concerned about specific items like floor mats, spare keys, nav discs, DVD headsets, etc. The description of vehicles provided by AutoRevo is generated through the use of artificial intelligence and machine learning algorithms. While every effort is made to ensure accuracy, AutoRevo cannot guarantee the completeness or reliability of the information provided. The description is intended to be used as a general guide and should not be relied upon as a substitute for

independent investigation and verification. Neither A Better Way Wholesale Autos nor AutoRevo shall be liable for any errors or omissions in the description and makes no representation or warranty, express or implied, about the accuracy, reliability, completeness, or timeliness of the information. The user assumes all risks associated with the use of the information provided. Fuel Economy: MPG based on and sourced from EPA mileage estimates. Use for comparison purposes only. Your actual mileage will vary depending on driving habits and vehicle maintenance. Advertised price does not include state or local taxes, registration costs or dealer conveyance fee of \$798.00. Some vehicles in our inventory have been used as a daily rental. See commercially available history reports to see if this disclaimer applies to any particular vehicle.

A Better Way Wholesale Autos-CT

abwautos.com

203-720-5600

49 Raytkwich Rd

Naugatuck, Connecticut 06770

© 2024 AutoRevo - All rights reserved. - Powered by [AutoRevo](#)