

# 2018 Ford F-250 Super Duty King Ranch 4x4

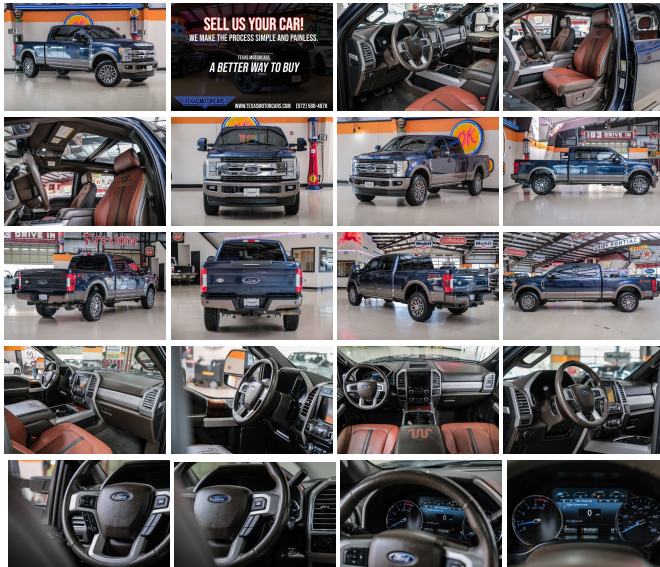
View this car on our website at [mrcarguys.com/7296643/ebrochure](http://mrcarguys.com/7296643/ebrochure)



Our Price **\$49,988**

## Specifications:

|                      |   |
|----------------------|---|
| <b>Year:</b>         | 2018  |
| <b>VIN:</b>          | 1FT7W2BT1JEC24348   |
| <b>Make:</b>         | Ford  |
| <b>Stock:</b>        | C24348  |
| <b>Model/Trim:</b>   | F-250 Super Duty King Ranch 4x4                           |
| <b>Condition:</b>    | Pre-Owned   |
| <b>Body:</b>         | Pickup Truck  |
| <b>Exterior:</b>     | [N1] Blue Jeans   |
| <b>Engine:</b>       | Power Stroke 6.7L Biodiesel Turbo V8<br>450hp 935ft. lbs. |
| <b>Interior:</b>     | Java Leather  |
| <b>Transmission:</b> | 6-Speed Shiftable Automatic                               |
| <b>Mileage:</b>      | 97,913  |
| <b>Drivetrain:</b>   | 4 Wheel Drive   |

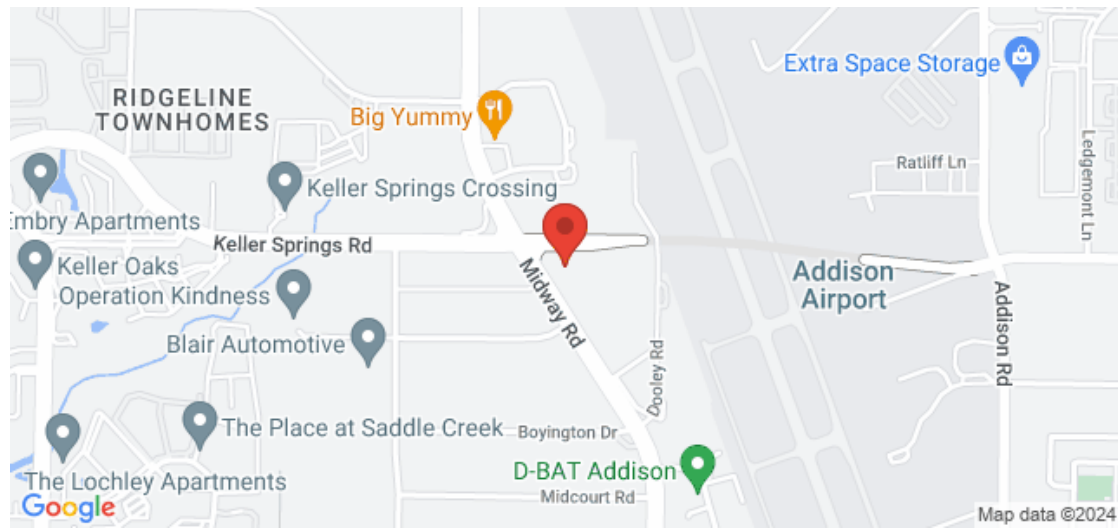


2018 Ford F-250 Super Duty King Ranch 4x4 It's hard to put into words how impressive this 2018 Ford F-250 Super Duty King Ranch 4x4 is, but here goes anyway. The F-250 commands attention with its vibrant blue exterior and luxurious brown leather interior. This powerhouse is more than just a pretty face; it's equipped with a formidable Power Stroke 6.7L Biodiesel Turbo V8 engine that belts out an impressive 450 horsepower and a staggering 935 foot-pounds of torque, ensuring that no task is too daunting. The seamless 6-Speed Shiftable Automatic transmission puts control at your fingertips, while the 3.55 Electronic Locking Axle Ratio provides the traction and capability you need for both on and off-road adventures. The King Ranch is not just built for power; it's also an oasis of comfort and technology. The Twin Panel Panoramic Moonroof bathes the cabin in natural light, creating an airy and inviting atmosphere for both driver and passengers alike. This truck is outfitted with an array of manufacturer options and packages that cater to both luxury and practicality. The 20 In. Premium Cast Aluminum Wheels add a touch of elegance, while the Power Deployable Running Boards and Tailgate Step ensure accessibility is never compromised. The Tough Bed Spray-In Bedliner protects your investment, making sure that this truck remains your reliable partner for years to come. For those who demand the ultimate in comfort, the King Ranch Ultimate Package offers multi-contour seats and a suite of LED lighting that elevates the driving experience. The Heated Rear Seats promise warmth and comfort for your passengers, no matter the weather. The FX4 Off-Road Package is ready to tackle the unbeaten path, offering skid plates, off-road tuned shocks, and a unique FX4 Off-Road box decal for the adventurers at heart. This F-250 delivers convenience with the Tow Technology Bundle and Ultimate Trailer Tow Camera System, providing unparalleled visibility and control when towing. The Adaptive

2018 Ford F-250 Super Duty King Ranch 4x4

Mr Car Guys - 214-732-7859 - View this car on our website at [mrcarguys.com/7296643/ebrochure](http://mrcarguys.com/7296643/ebrochure)

### Our Location :



2018 Ford F-250 Super Duty King Ranch 4x4

Mr Car Guys - 214-732-7859 - View this car on our website at [mrcarguys.com/7296643/ebrochure](http://mrcarguys.com/7296643/ebrochure)

### Installed Options

#### Interior

- Air filtration- Power outlet(s): 12V front- Clock- Digital odometer
- External temperature display- Powertrain hour meter- Rear seat folding: folds up
- Rear seat type: 60-40 split bench

#### Exterior

- Tailgate: lift assist- Towing mirrors- Spare wheel type: steel
- Tire Pressure Monitoring System- Solar-tinted glass: front

Mr Car Guys

[mrcarguys.com](http://mrcarguys.com)

214-732-7859

16000 Midway Rd.

Addison, TX 75001

© 2024 AutoRevo - All rights reserved. - Powered by AutoRevo