

2018 Ford F-250 Super Duty King Ranch 4x4

View this car on our website at texasmotorcars.com/7296455/ebrochure



Our Price **\$49,988**

Specifications:

Year:	2018
VIN:	1FT7W2BT1JEC24348
Make:	Ford
Stock:	C24348
Model/Trim:	F-250 Super Duty King Ranch 4x4
Condition:	Pre-Owned
Body:	Pickup Truck
Exterior:	[N1] Blue Jeans
Engine:	Power Stroke 6.7L Biodiesel Turbo V8 450hp 935ft. lbs.
Interior:	Java Leather
Transmission:	6-Speed Shiftable Automatic
Mileage:	97,913
Drivetrain:	4 Wheel Drive

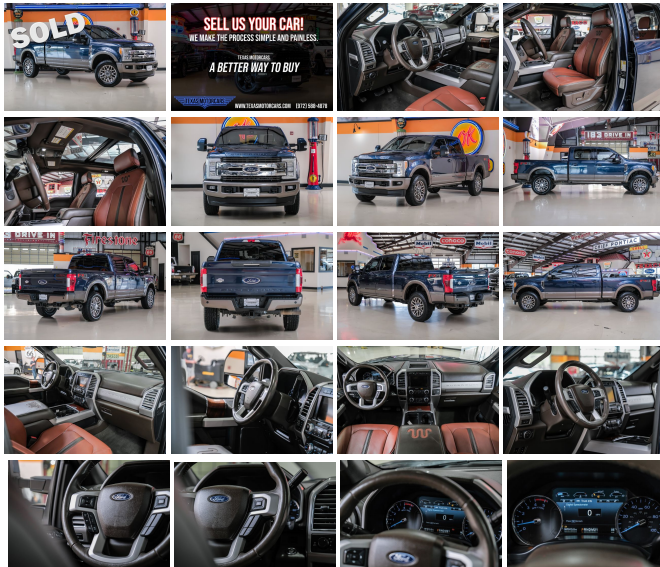
2018 Ford F-250 Super Duty King Ranch 4x4

It's hard to put into words how impressive this 2018 Ford F-250 Super Duty King Ranch 4x4 is, but here goes anyway. The F-250 commands attention with its vibrant blue exterior and luxurious brown leather interior. This powerhouse is more than just a pretty face; it's equipped with a formidable Power Stroke 6.7L Biodiesel Turbo V8 engine that belts out an impressive 450 horsepower and a staggering 935 foot-pounds of torque, ensuring that no task is too daunting.

The seamless 6-Speed Shiftable Automatic transmission puts control at your fingertips, while the 3.55 Electronic Locking Axle Ratio provides the traction and capability you need for both on and off-road adventures. The King Ranch is not just built for power; it's also an oasis of comfort and technology. The Twin Panel Panoramic Moonroof bathes the cabin in natural light, creating an airy and inviting atmosphere for both driver and passengers alike.

This truck is outfitted with an array of manufacturer options and packages that cater to both luxury and practicality. The 20 In. Premium Cast Aluminum Wheels add a touch of elegance, while the Power Deployable Running Boards and Tailgate Step ensure accessibility is never compromised. The Tough Bed Spray-In Bedliner protects your investment, making sure that this truck remains your reliable partner for years to come.

For those who demand the ultimate in comfort, the King Ranch Ultimate Package offers multi-contour seats and a suite of LED lighting that elevates the driving experience. The Heated Rear Seats promise



elevates the driving experience. The heated rear seats promise warmth and comfort for your passengers, no matter the weather. The FX4 Off-Road Package is ready to tackle the unbeaten path, offering skid plates, off-road tuned shocks, and a unique FX4 Off-Road box decal for the adventurers at heart.

This F-250 delivers convenience with the Tow Technology Bundle and Ultimate Trailer Tow Camera System, providing unparalleled visibility and control when towing. The Adaptive Cruise Control and Collision Warning with Brake Support, along with the Blind Spot Information System with Cross-Traffic Alert, work in unison to keep you safe on the road.

The 5th Wheel/Gooseneck Hitch Prep Package and Upfitter Switches offer unmatched towing versatility and customization potential, making this truck as practical as it is luxurious. Recognized with Kelley Blue Book's Brand Image Awards for Best Overall Truck Brand, this Ford F-250 Super Duty King Ranch 4x4 isn't just a vehicle; it's a statement of excellence and capability.

This vehicle has been reduced at below wholesale prices.

READY for work and play! Give us a call today!

Can't make it in? We offer shipping all over the United States. Ask your salesperson for shipping quotes.

Financing is available with competitive rates! Get pre-approved in no time by filling out a credit application on the finance section of our website! We also offer industry leading, highly rated warranty options so you can select one perfect for your specific vehicle needs.

All vehicles are priced for QUICK SALE. Call us today to see how easy it is to buy a vehicle at Texas Motorcars.

Texas Motorcars in Addison is a family owned and operated business. We are committed to delivering the best possible service!

Se habla Español!

Texas Motorcars "A Better Way To Buy!"

2018 Ford F-250 Super Duty King Ranch 4x4

Texas Motorcars - 972-521-7788 - View this car on our website at texasmotorcars.com/7296455/ebrochure

Vehicle History Report : as Of 04/27/2024

CARFAX

Snapshot

2018 FORD F-250 SUPER DUTY KING RANCH



Damage reported: minor damage



MINOR MODERATE SEVERE

25 Service history records



At least 1 open recall



CARFAX 1-Owner vehicle



97,913 Last reported odometer reading

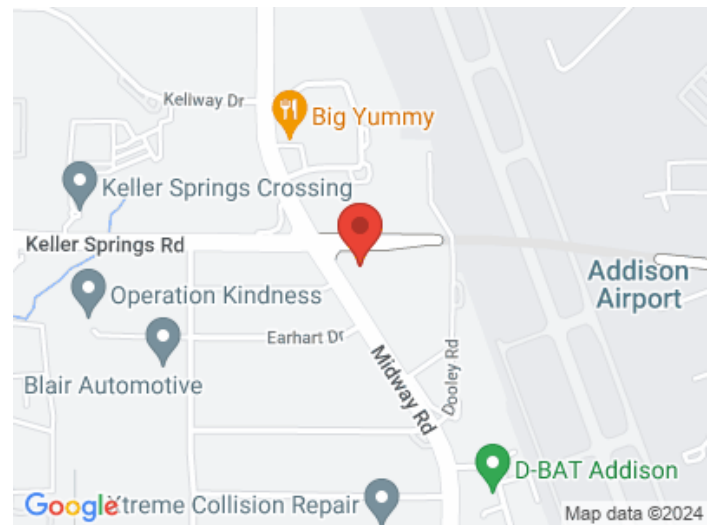


FREE CARFAX Report

See the full CARFAX Report for additional information

*carfax Snapshot is a reflection of available information on the date the report was pulled. carfax is constantly being updated with new information and is subject to change at any time.

Our Location :



2018 Ford F-250 Super Duty King Ranch 4x4

Texas Motorcars - 972-521-7788 - View this car on our website at texasmotorcars.com/7296455/ebrochure

Installed Options

Interior

- Air filtration- Front air conditioning: automatic climate control
- Front air conditioning zones: dual- Rear vents: second row- Center console trim: leather
- Door trim: leather- Floor mat material: carpet- Floor mats: front- Heated steering wheel
- Steering wheel trim: leather- Adjustable pedals: power- Ambient lighting- Cruise control
- Easy entry: power driver seat- Keypad entry- Memorized settings: 3 driver
- Power outlet(s): 115V front- Power steering- Push-button start
- Rearview mirror: auto-dimming- Remote engine start
- Steering wheel: power tilt and telescopic
- Universal remote transmitter: garage door opener- Clock- Compass
- Customizable instrument cluster- Digital odometer- External temperature display
- Instrument cluster screen size: 8 in.- Multi-function display- Powertrain hour meter
- Trip odometer- Driver seat: cooled- Driver seat power adjustments: 10
- Front seat type: captains chairs- Passenger seat: cooled
- Passenger seat power adjustments: 10- Rear seat folding: folds up
- Rear seat type: 60-40 split bench - Upholstery: leather

Exterior

- Mirror color: body-color- Paint: two-tone- Pickup bed light: LED
- Running boards: illuminated- Tailgate: lift assist- Exterior entry lights: approach lamps

Option Packages

Factory Installed Packages

["20 In. Premium Cast Aluminum Wheels", "Includes four 20 inch premium cast aluminum wheels with King Ranch hub covers and center ornaments."] \$1,420

["Power Deployable Running Boards"] \$795

["Tailgate Step", "Includes Tailgate Assist with step and flip up grab bar."] \$375

["Tough Bed Spray-In Bedliner", "Includes tailgate guard, black box bed tie down hooks, and black bed attachment bolts."] \$540

["Twin Panel Panoramic Moonroof", "Includes twin panel power"]

- Front fog lights- Side mirror adjustments: power- Side mirrors: heated- Towing mirrors
- Spare wheel type: steel- Tire Pressure Monitoring System- Wheels: aluminum alloy
- Pickup sliding rear window: power horizontal- Power windows: safety reverse
- Rear privacy glass- Solar-tinted glass: front- Window defogger: rear

panoramic moonroof with map lights and moonroof switches."]
\$1,295

["Heated Rear Seats"]
\$300

["Equipment Group 700A", "Includes vehicle with standard equipment. Package price is included in the base vehicle MSRP. Required for ordering purposes."]

["FX4 Off-Road Package", "Includes hill descent control, transfer case and fuel tank skid plates, off-road tuned shocks, and unique FX4 Off Road box decal."]
\$400

["King Ranch Ultimate Package", "Includes multi-contour seats, LED fog lamps, LED tail lamps, quad LED head lamps, twin panel moonroof, power deployable running boards, tailgate step, BLIS (Blind Spot Information System) with cross traffic alert, and Trailer Tow (BLIS sensor in taillamp)."]
\$3,075

["Tow Technology Bundle", "Includes adaptive steering, lane-keeping alert, ultimate trailer tow camera system (includes 360 camera plus CHMSL camera), and automatic high beam with rain-sensing windshield wipers."]
\$2,150

["Ultimate Trailer Tow Camera System", "Includes rear view camera, 360 degree camera system, rear CHMSL camera, trailer reverse guidance and LED center high-mounted stop lamp (display in center stack screen)."]
\$710

["3.55 Electronic Locking Axle Ratio"]
\$390

["5th Wheel/Gooseneck Hitch Prep Package", "Includes one frame under-bed cross member, five pickup bed attachment points with plugs, and one integrated 7-pin connector on drivers side pick-up bed wall."]
\$500

["Upfitter Switches", "Includes six (6) switches located in overhead console."]
\$165

["Adaptive Cruise Control and Collision Warning w/Brake Support"]
\$740

["Blind Spot Information System w/Cross-Traffic Alert", "Includes BLIS (Blind Spot Information System) with cross traffic alert, and Trailer Tow (BLIS sensor in taillamp)."]
\$540

Option Packages Total
\$13,395

972-521-7788

16000 Midway Rd

Addison, Texas 75001

© 2024 AutoRevo - All rights reserved. - Powered by AutoRevo