

# 2018 Ford F-350 Super Duty Platinum 4x4

View this car on our website at [texasmotorcars.com/7296449/ebrochure](http://texasmotorcars.com/7296449/ebrochure)



Our Price **\$53,988**

## Specifications:

<b>Year:</b>	2018
<b>VIN:</b>	1FT8W3BT1JEB88333
<b>Make:</b>	Ford
<b>Stock:</b>	B88333
<b>Model/Trim:</b>	F-350 Super Duty Platinum 4x4
<b>Condition:</b>	Pre-Owned
<b>Body:</b>	Pickup Truck
<b>Exterior:</b>	[G1] Shadow Black
<b>Engine:</b>	Power Stroke 6.7L Biodiesel Turbo V8 450hp 935ft. lbs.
<b>Interior:</b>	Black Leather
<b>Transmission:</b>	6-Speed Shiftable Automatic
<b>Mileage:</b>	89,732
<b>Drivetrain:</b>	4 Wheel Drive

## 2018 Ford F-350 Super Duty Platinum 4x4

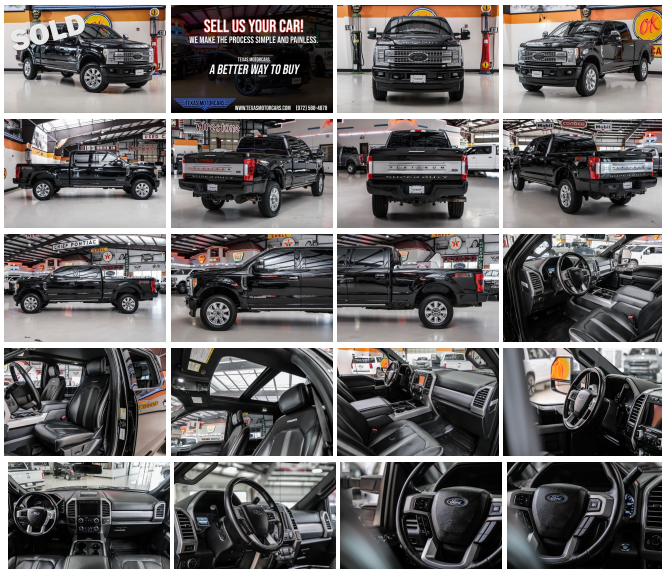
Wrapped in a sleek black exterior, this F-350 exudes sophistication and authority. The polished aluminum alloy wheels catch the light and the eyes of onlookers, while the Tough Bed Spray-In Bedliner ensures that the truck bed is as durable as it is stylish, ready for any cargo without compromising on appearance.

The driver and passenger seats aren't just heated; they're cooled, providing year-round comfort. The touch screen navigation system is your command center, guiding you effortlessly to your destination, while the premium Sony sound system envelops you in acoustic clarity, transforming every drive into a private concert.

Driving is believing, and with the Platinum Ultimate Package, this F-350 takes technology to new heights. The lane-keeping alert and adaptive cruise control offer an extra layer of safety and convenience, while the ultimate trailer tow camera system provides a 360-degree view, simplifying every maneuver. The collision warning with brake support is your vigilant co-pilot, ready to respond when needed.

Off-road adventures beckon with the FX4 Off-Road Package, featuring hill descent control, skid plates, and specially tuned shocks. The 3.55 Electronic Locking Axle Ratio ensures that no terrain is too challenging, and with the 5th Wheel Hitch Kit, this F-350 is prepped to haul with confidence and ease.

The Rear CHMSL Camera is the cherry on top, offering a clear view of the cargo area, making it easier to monitor your precious load. And for those who demand customization, the Upfitter Switches in the overhead console provide the flexibility to add accessories tailored to your needs.



console provide the flexibility to add accessories tailored to your needs.

This truck isn't just a vehicle; it's a powerhouse wrapped in luxury, a tool that elevates work to an art form, and a companion that's ready for any challenge. Don't just take the road—own it with this 2018 Ford F-350 Super Duty Platinum 4x4.

## This vehicle has been reduced at below wholesale prices.

READY for work and play! Give us a call today!

Can't make it in? We offer shipping all over the United States. Ask your salesperson for shipping quotes.

Financing is available with competitive rates! Get pre-approved in no time by filling out a credit application on the finance section of our website! We also offer industry leading, highly rated warranty options so you can select one perfect for your specific vehicle needs.

All vehicles are priced for QUICK SALE. Call us today to see how easy it is to buy a vehicle at Texas Motorcars.

Texas Motorcars in Addison is a family owned and operated business. We are committed to delivering the best possible service!

Se habla Español!

Texas Motorcars "A Better Way To Buy!"

---

2018 Ford F-350 Super Duty Platinum 4x4

Texas Motorcars - 972-521-7788 - View this car on our website at [texasmotorcars.com/7296449/ebrochure](https://www.texasmotorcars.com/7296449/ebrochure)

Vehicle History Report : as Of 04/27/2024



Snapshot

2018 FORD F-350 SUPER DUTY PLATINUM



No accidents or damage reported to CARFAX



18 Service history records



At least 1 open recall



CARFAX 1-Owner vehicle



Personal vehicle



89,734 Last reported odometer reading

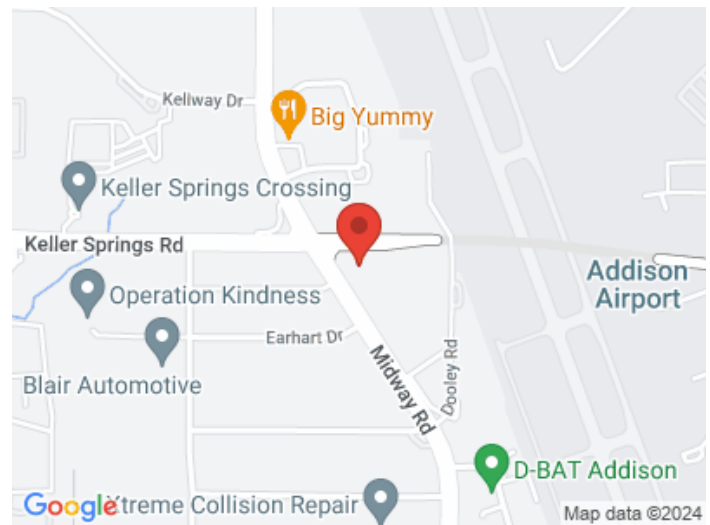


**FREE CARFAX Report**

See the full CARFAX Report for additional information

\*carfax Snapshot is a reflection of available information on the date the report was pulled. carfax is constantly being updated with new information and is subject to change at any time.

Our Location :



## Installed Options

### Interior

- Air filtration- Front air conditioning: automatic climate control
- Front air conditioning zones: dual- Rear vents: second row- Center console trim: leather
- Door trim: leather- Floor mat material: carpet- Floor mats: front- Heated steering wheel
- Steering wheel trim: leather- Adjustable pedals: power- Ambient lighting- Cruise control
- Easy entry: power driver seat- Keypad entry- Memorized settings: 3 driver
- Power outlet(s): 115V front- Power steering: variable/speed-proportional
- Push-button start- Rearview mirror: auto-dimming- Remote engine start
- Steering wheel: power tilt and telescopic
- Universal remote transmitter: garage door opener- Clock- Compass
- Customizable instrument cluster- Digital odometer- External temperature display
- Instrument cluster screen size: 8 in.- Multi-function display- Powertrain hour meter
- Trip odometer- Driver seat: cooled- Driver seat power adjustments: 10
- Front seat type: captains chairs- Passenger seat: cooled
- Passenger seat power adjustments: 10- Rear seat: heated- Rear seat folding: folds up
- Rear seat type: 60-40 split bench - Upholstery: leather

### Exterior

- Door handle color: body-color with chrome accents- Front bumper color: body-color
- Mirror color: chrome- Pickup bed light: LED- Running boards: illuminated
- Tailgate: lift assist- Exterior entry lights: approach lamps- Front fog lights: LED
- Taillights: LED- Side mirror adjustments: power- Side mirrors: heated- Towing mirrors
- Spare wheel type: steel- Tire Pressure Monitoring System
- Wheels: polished aluminum alloy- Pickup sliding rear window: power horizontal
- Power windows: safety reverse- Rear privacy glass- Solar-tinted glass: front
- Window defogger: rear

## Option Packages

### Factory Installed Packages

---

["Tough Bed Spray-In Bedliner", "Includes tailgate guard, black box bed tie down hooks, and black bed attachment bolts."] \$540

---

["Twin Panel Panoramic Moonroof", "Includes twin panel power panoramic moonroof with map lights and moonroof switches."] \$1,295

---

["Equipment Group 713A", "Includes vehicle with standard equipment. Package price is included in the base vehicle MSRP. Required for ordering purposes."] \$400

---

["FX4 Off-Road Package", "Includes hill descent control, transfer case and fuel tank skid plates, off-road tuned shocks, and unique FX4 Off Road box decal."] \$2,955

---

["Platinum Ultimate Package", "Includes twin panel moonroof, lane-keeping alert, ultimate trailer tow camera system (includes 360 camera plus CHMSL camera), adaptive cruise control, and collision warning with brake support."] \$390

---

["3.55 Electronic Locking Axle Ratio"] \$1,095

---

["5th Wheel Hitch Kit", "Includes 18k rated hitch."] \$165

---

["Upfitter Switches", "Includes six (6) switches located in overhead console."] \$200

---

["Rear CHMSL Camera", "Includes LED center high-mounted stop lamp with cargo light and rear video camera with display in center stack screen."] \$7,040

---

Option Packages Total

\$7,040

Texas Motorcars  
[texasmotorcars.com](http://texasmotorcars.com)  
972-521-7788

16000 Midway Rd  
Addison, Texas 75001

© 2024 AutoRevo - All rights reserved. - Powered by AutoRevo