



2017 Jeep Cherokee Latitude

No-Haggle Price \$16,495

View this vehicle on our website at soundautowholesalers.com



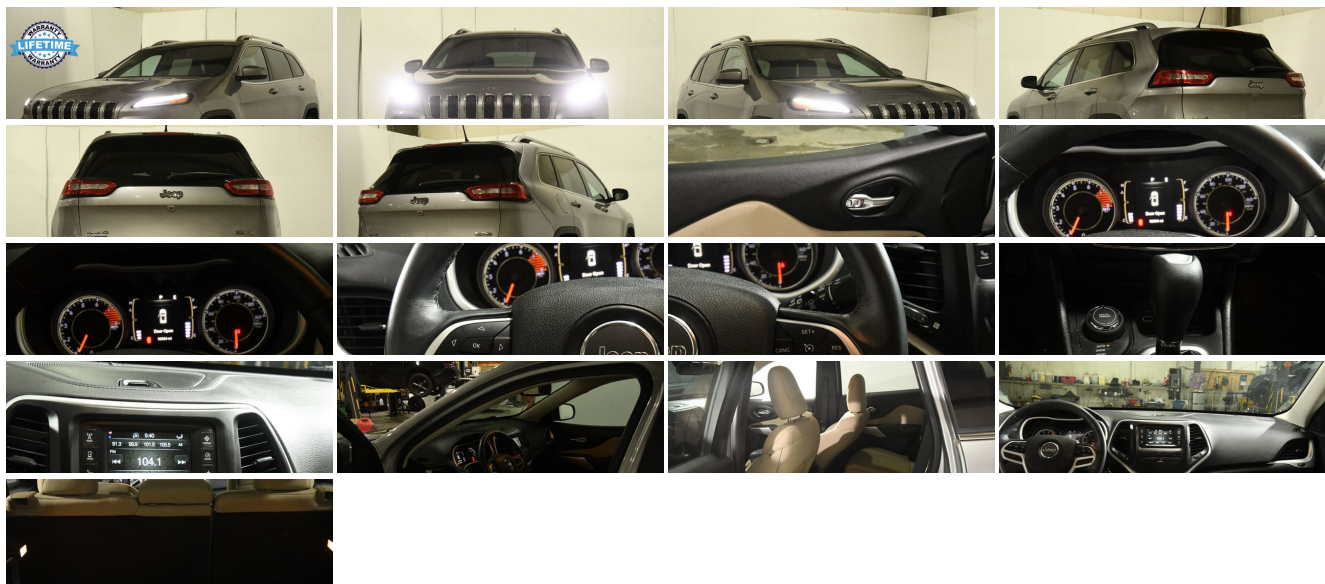
(203) 466-2622

139 W Main St, Branford, CT 06405

Photos

Details

Contact



Specifications:

Year:	2017
VIN:	1C4PJMCS4HW579387
Make:	Jeep
Stock:	6253
Model/Trim:	Cherokee Latitude
Condition:	Pre-Owned
Body:	SUV
Exterior:	[PSC] Billet Silver Metallic Clear Coat
Engine:	3.2L V6 271hp 239ft. lbs.
Interior:	Black Cloth
Transmission:	9-Speed Shiftable Automatic
Mileage:	52,969
Drivetrain:	4 Wheel Drive
Economy:	City 20 / Highway 27

Vehicle Description

Prepare to be captivated by the stunning fusion of rugged capability and refined comfort in the 2017 Jeep Cherokee Latitude, a vehicle that effortlessly blends the spirit of adventure with the sophistication of modern technology. With a mere 52,969 miles on the odometer, this silver-coated gem is just getting started on its journey with you. Under the hood lies the heart of this beast,a robust 3.2L V6 engine, pumping out an exhilarating 271 horsepower and 239 lb-ft of torque. Paired with a silky smooth 9-speed shiftable automatic transmission, you'll experience an impeccable balance of power and efficiency, ready to conquer highways and trails alike. Step inside to a world where comfort meets style, enveloped in a sleek black cloth interior that is both durable and inviting. The leather-trimmed steering wheel offers a luxurious touch, ensuring every drive is a tactile pleasure. The spacious cabin is a haven of safety, equipped with dual front knee airbags, front side airbags, and front side curtain airbags, wrapping you and your passengers in a cocoon of protection. Connectivity is at your fingertips with the integrated wireless data link Bluetooth system, allowing for effortless streaming of your favorite tunes and hands-free calls. The auxiliary audio input further enhances your audio experience, providing crystal clear sound through six premium speakers. Stay entertained and informed with the SiriusXM satellite radio, offering a vast array of channels to suit any taste. The Jeep Cherokee Latitude doesn't just shine in performance and comfort; it's a beacon of convenience and security. The rearview camera system grants you unparalleled visibility, making parking and reversing as simple as a breeze. LED daytime running lights and LED taillights not only add to the vehicle's striking appearance but also enhance visibility and safety on the road. For those who demand control and versatility, the electronic 4WD selector empowers you to tackle any terrain with confidence. The active head restraints provide additional security, while the cruise control invites you to relax and enjoy the journey, mile after mile. The manufacturer options and packages on this Cherokee Latitude are the cherries on top, with aluminum alloy wheels that perfectly complement the vehicle's sleek silhouette. Every detail has been thoughtfully designed to offer you a driving experience that is both exhilarating and secure. While the details of the warranty can be found with a simple click on the Warranty Tab, rest assured that you are investing in a vehicle that is backed by a commitment to your peace of mind. This 2017 Jeep Cherokee Latitude isn't just a car; it's a statement,a statement of freedom, capability, and style. Don't let this opportunity slip through your fingers. Embrace the call of the open road and make this Jeep Cherokee Latitude the newest member of your family. It's not just a purchase; it's an adventure waiting to happen.

Installed Options

Interior

- Air filtration- Front air conditioning- Rear vents: second row- Cargo area floor mat
- Door trim: cloth- Floor mat material: carpet- Floor mats: front
- Steering wheel trim: leather- Ambient lighting- Cargo area light- Cruise control
- Multi-function remote: keyless entry- Power outlet(s): 115V- Power steering
- Steering wheel: tilt and telescopic- Clock- Compass- Digital odometer
- External temperature display- Multi-function display- Trip odometer
- Front seat type: bucket - Passenger seat folding: folds flat - Rear seat folding: split
- Rear seat type: 60-40 split bench - Upholstery: cloth

Exterior

- Active grille shutters- Front bumper color: body-color- Mirror color: body-color
- Daytime running lights: LED- Front fog lights- Taillights: LED
- Roof rack crossbars: chrome- Roof rails: chrome- Spare wheel type: aluminum alloy
- Tire Pressure Monitoring System- Wheels: aluminum alloy
- Front wipers: variable intermittent- Power windows- Rear wiper: intermittent
- Window defogger: rear

Prices do not include sales tax, registration fees and dealer conveyance fee of 799. If you have a trade-in your sales tax will be reduced based on the difference between the car you are purchasing and your trade-in. Final credit decisions are made by lenders. The advertised price is the price for this vehicle in its current condition. Any alterations, upgrades, installations, cosmetic work, or any other additions requested by the customer would incur an additional cost, to be added to the selling price of the vehicle. The price does not include sales tax, vehicle registration charges, cost of additional requests by the customer, finance charges, processing charges, or any other charges required by law. The dealer reserves the right to pass all vehicles through Connecticut State inspection prior to delivery. The dealer attempts to update this inventory on a regular basis, however, there can be a delay between the sale of a vehicle and the update of the dealer's online inventory. Advertised price does not include sales tax, vehicle registration charges, cost of additional requests by the customer, finance charges, processing charges, or any other charges required by law. Vehicles are sold cosmetically as is and equipped as is. Costs incurred by Sound Auto Wholesalers as a result of customer requests are not included in advertised prices. Customer must present a signed copy of this ad at the time of purchase. Online pricing excludes all prior offers, and may not be combined with any other offers, coupons, or discounts. Vehicle options and pricing are subject to change. Special price includes all dealer rebates and incentives. Finance promotions based on tier 1 credit approval after 20% down payment. All online prices expire at 12:01 PM today. Sound Auto Wholesalers will honor expired advertised prices up to 24 hours after expiration, provided the customer presents a signed, printed copy of the advertised price at the start of their visit. We make every effort to adequately represent the condition and features of all our inventory including vehicle information, pictures, pricing, and status but there may be inaccuracies. Sound Auto Wholesalers assumes no responsibility for inaccuracies in online information nor is it responsible for errors in any third-party advertisements. Please confirm any questions or concerns by contacting Sound Auto Wholesalers directly. EPA mileage estimates are based on model year EPA mileage ratings and are for comparison purposes only. Your actual mileage will vary depending on how you drive and maintain your vehicle. Before purchasing this vehicle, it is solely the customer's responsibility to address any and all differences between the information on this website and the actual vehicle specifications and/or warranties offered prior to the sale of this vehicle. Vehicle data on this website is compiled from publicly available sources believed by the publisher to be reliable. Vehicle data is subject to change without notice. The publisher assumes no responsibility for errors and/or omissions in this data and its compilation, and makes no representations expressed or implied to any actual or prospective purchaser of the vehicle as to the condition of the vehicle, vehicle specifications, ownership, vehicle history, equipment/accessories, price, or warranties. We are A-Plus Rated by The Better Business Bureau.

Sound Auto Wholesalers

Sound Auto Wholesalers

View this car on our website at soundautowholesalers.com/7296291

Website: soundautowholesalers.com

Phone: (203) 466-2622

Map: [139 W Main St, Branford, CT 06405](#)

