

# 2012 Volkswagen GTI Autobahn PZEV

View this car on our website at [autosourcehawaii.com/7296254/ebrochure](http://autosourcehawaii.com/7296254/ebrochure)

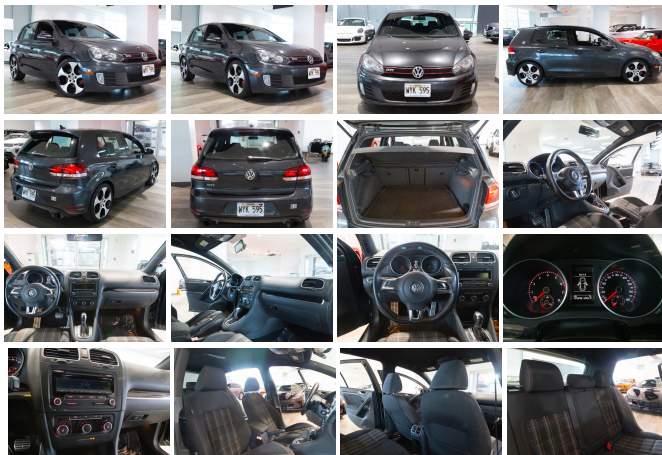


Our Price **\$12,995**

Retail Value **\$14,995**

## Specifications:

|                      |                                      |
|----------------------|--------------------------------------|
| <b>Year:</b>         | 2012                                 |
| <b>VIN:</b>          | WVWHD7AJ1CW141216                    |
| <b>Make:</b>         | Volkswagen                           |
| <b>Stock:</b>        | A000014                              |
| <b>Model/Trim:</b>   | GTI Autobahn PZEV                    |
| <b>Condition:</b>    | Pre-Owned                            |
| <b>Body:</b>         | Hatchback                            |
| <b>Exterior:</b>     | Shadow Blue Metallic                 |
| <b>Engine:</b>       | 2.0L Turbo I4 200hp 207ft. lbs. PZEV |
| <b>Interior:</b>     | Titan Black                          |
| <b>Transmission:</b> | 6-Speed Double Clutch                |
| <b>Mileage:</b>      | 105,831                              |
| <b>Drivetrain:</b>   | Front Wheel Drive                    |
| <b>Economy:</b>      | City 24 / Highway 33                 |



Step into the realm of precision engineering and exhilarating performance with this stunning 2012 Volkswagen GTI Autobahn PZEV. A true driver's delight, this GTI boasts a mileage that reflects its well-enjoyed journey at 105,831 miles, promising many more miles of dynamic driving ahead.

Under the hood lies a heart that beats with pure enthusiasm – a 2.0L Turbo I4 engine, delivering a robust 200 horsepower and 207 ft. lbs. of torque. This powerplant is not only about spirited performance but also about environmental consciousness, adhering to the Partial Zero Emissions Vehicle (PZEV) standards, ensuring you leave a lighter footprint while enjoying turbocharged thrills.

The 6-Speed Double Clutch transmission in this GTI is a marvel of automotive innovation, offering you the smoothness of an automatic with the sharp, responsive feel of a manual gearbox. It's a symphony of efficiency and excitement, ensuring seamless power delivery and a driving experience that's both engaging and effortlessly enjoyable.

As you approach this masterpiece, the sleek, body-colored mirror caps and front bumper beckon. The dual-tip exhaust hints at the GTI's sporty intent, while the roofline rear spoiler not only adds to the aerodynamic profile but also serves as a statement of your discerning taste for performance-oriented design. The heated side mirrors provide clear visibility during those chilly mornings, ensuring your safety and convenience.

Illuminate your path with the front fog lights and daytime running lights, ensuring you're both seen and able to see, no matter the weather or

time of day. These practical yet stylish elements enhance the GTI's already striking presence on the road.

Inside, the cabin is your personal command center with a suite of technological amenities at your fingertips. The wireless data link Bluetooth system integrates seamlessly with your devices, keeping you connected while on the move. Voice-operated hands-free phone call integration means your focus never strays from the joy of driving. An 8-speaker audio system envelops you in crystal-clear sound, while the SiriusXM satellite radio opens up a world of entertainment options, all controlled through an MP3 Playback compatible In-Dash CD player.

Your peace of mind is paramount, which is why this GTI is equipped with a Tire Pressure Monitoring System, ensuring that your vehicle is always running at optimal safety levels. The steel spare wheel stands ready, providing reassurance that you're well-prepared for the unexpected.

This 2012 Volkswagen GTI Autobahn PZEV isn't just a car; it's a recipient of J.D. Power and Associates' Automotive Performance, Execution and Layout (APEAL) Study award, recognized as a top model in its segment. This accolade is a testament to the GTI's ability to deliver a driving experience that's both satisfying and superior in its class.

Don't miss the opportunity to own a vehicle that combines performance, technology, and award-winning design. This 2012 Volkswagen GTI Autobahn PZEV is waiting to ignite your passion for driving and become a cherished addition to your lifestyle. Contact us today to schedule a test drive and prepare to be captivated by a car that truly understands the essence of the driving pleasure.

---

2012 Volkswagen GTI Autobahn PZEV

Autosource Hawaii - (808) 597-8522 - View this car on our website at [autosourcehawaii.com/7296254/ebrochure](http://autosourcehawaii.com/7296254/ebrochure)

## Vehicle History Report : as Of 04/28/2024

**CARFAX**

Snapshot

**2012 VOLKSWAGEN GTI BASE PZEV**



No accidents or damage reported to CARFAX



20 Service history records



5 Previous owners



Personal vehicle



Last owned in Hawaii



105,831 Last reported odometer reading



**FREE CARFAX Report**

See the full CARFAX Report for additional information

\*carfax Snapshot is a reflection of available information on the date the report was pulled. carfax is constantly being updated with new information and is subject to change at any time.

## Our Location :



2012 Volkswagen GTI Autobahn PZEV

Autosource Hawaii - (808) 597-8522 - View this car on our website at [autosourcehawaii.com/7296254/ebrochure](http://autosourcehawaii.com/7296254/ebrochure)

## Installed Options

### Interior

- Air filtration- Front air conditioning- Rear vents: second row
- Armrests: rear center folding with storage and pass-thru- Floor mat material: carpet
- Floor mats: front- Foot pedal trim: aluminum- Parking brake trim: leather
- Shift knob trim: leather- Cargo area light- Cargo cover- Cruise control- Footwell lights
- Power outlet(s): two 12V- Power steering- Steering wheel: tilt and telescopic
- Steering wheel mounted controls: paddle shifter- Compass- Trip odometer
- Driver seat: heated- Front seat type: sport bucket - Passenger seat: heated
- Rear seat folding: split- Rear seat type: 60-40 split bench

### Exterior

- Exhaust: dual tip- Front bumper color: body-color- Mirror color: body-color
- Rear spoiler: roofline- Daytime running lights- Front fog lights
- Side mirror adjustments: power- Side mirrors: heated- Spare wheel type: steel
- Tire Pressure Monitoring System- Wheels: aluminum alloy
- Front wipers: variable intermittent- Heated windshield- Power windows: safety reverse
- Rear wiper- Window defogger: rear

---

Autosource Hawaii  
[autosourcehawaii.com](https://autosourcehawaii.com)  
(808) 597-8522

1488 Kapiolani Blvd  
Honolulu, HI 96814

© 2024 AutoRevo - All rights reserved. - Powered by [AutoRevo](#)