



2019 Cadillac Escalade ESV Premium Luxury

Our Price \$43,995

Retail Value \$44,995

View this vehicle on our website at montcoindustries.com

Montco Industries

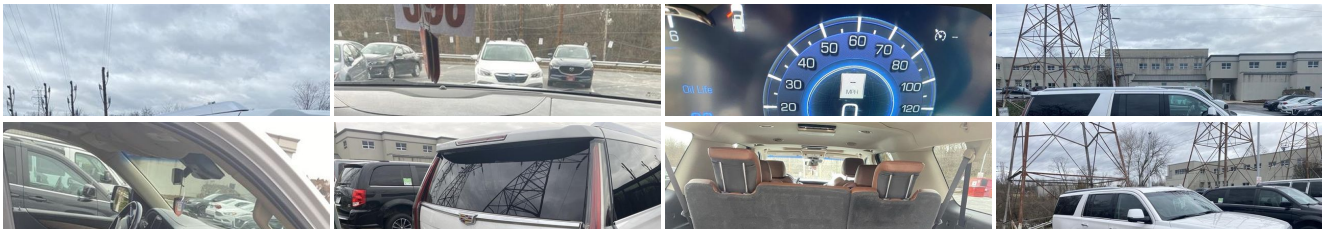
[610-233-1081](tel:610-233-1081)

335 Pawlings Rd, Phoenixville, PA 19460

[Photos](#)

[Details](#)

[Contact](#)





Specifications:

Year:	2019
VIN:	1GYS4JKJ0KR195261
Make:	Cadillac
Stock:	1466-03357
Model/Trim:	Escalade ESV Premium Luxury
Condition:	Pre-Owned
Body:	SUV
Exterior:	[G1W] Crystal White Tricoat
Engine:	EcoTec3 6.2L V8 420hp 460ft. lbs.
Interior:	Kona Brown w/Jet Black Inserts Leather
Transmission:	10-Speed Shiftable Automatic
Mileage:	67,985
Drivetrain:	4 Wheel Drive
Economy:	City 14 / Highway 21

Vehicle Description

Vehicle History Report : as Of 06/30/2025

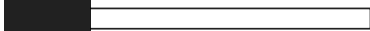


Snapshot

2019 CADILLAC ESCALADE ESV PREMIUM LUXURY



Damage reported: minor damage



MINOR MODERATE SEVERE

16 Service history records



3 Previous owners



Types of owners: Corporate, Personal



69,764 Last reported odometer reading



FREE CARFAX Report

See the full CARFAX Report for additional information

*carfax Snapshot is a reflection of available information on the date the report was pulled. carfax is constantly being updated with new information and is subject to change at any time.

Installed Options

Interior

- Air filtration- Front air conditioning: automatic climate control
- Front air conditioning zones: dual - Rear air conditioning: automatic climate control
- Rear vents: third row- Center console trim: leather- Dash trim: leather
- Door trim: leather- Floor mat material: carpet- Floor mats: front- Heated steering wheel
- Interior accents: chrome- Shift knob trim: leather- Steering wheel trim: leather
- Active parking system: semi-automatic- Adaptive cruise control
- Adaptive stop and go cruise control: semi-automatic - Adjustable pedals: power
- Ambient lighting- Capless fuel filler system- Cargo area light
- Easy entry: power rear seat- Footwell lights- Memorized settings: 2 driver
- Power outlet(s): 115V rear- Power steering- Push-button start
- Rearview mirror: auto-dimming- Remote engine start
- Steering wheel: power tilt and telescopic
- Universal remote transmitter: garage door opener - Wireless charging station: front
- Clock- Compass- Customizable instrument cluster- Digital odometer
- External temperature display- Head-up display- Instrument cluster screen size: 12 in.
- Multi-function display- Trip odometer- Driver seat: cooled
- Driver seat power adjustments: 12- Front seat type: bucket - Passenger seat: cooled
- Passenger seat power adjustments: 12- Rear seat: heated- Rear seat folding: power
- Rear seat type: bucket- Third row seat folding: power
- Third row seat type: 40-60 split bench - Upholstery: leather-trimmed

Exterior

- Active grille shutters- Body side moldings: chrome- Door handle color: chrome
- Front bumper color: body-color- Mirror color: body-color- Running boards
- Daytime running lights: LED- Exterior entry lights: approach lamps- Taillights: LED
- Side mirror adjustments: power- Side mirrors: driver side auto-dimming
- Moonroof / Sunroof wind deflector- Roof rails: chrome- Spare wheel type: steel
- Tire Pressure Monitoring System- Wheels: painted aluminum alloy
- Front wipers: rain sensing- Laminated glass: acoustic windshield
- Liftgate window: manual flip-up- Rear privacy glass- Rear wiper: intermittent
- Solar-tinted glass- Window defogger: rear

Montco Industries

Montco Industries

View this car on our website at montcoindustries.com/7295944

Website: montcoindustries.com

Phone: [610-233-1081](tel:610-233-1081)

Map: [335 Pawlings Rd, Phoenixville, PA 19460](#)

