

2024 Jeep Wrangler Rubicon 392 4X4 HARD TOP,BUMPERS,LED'S,FUEL WHLS

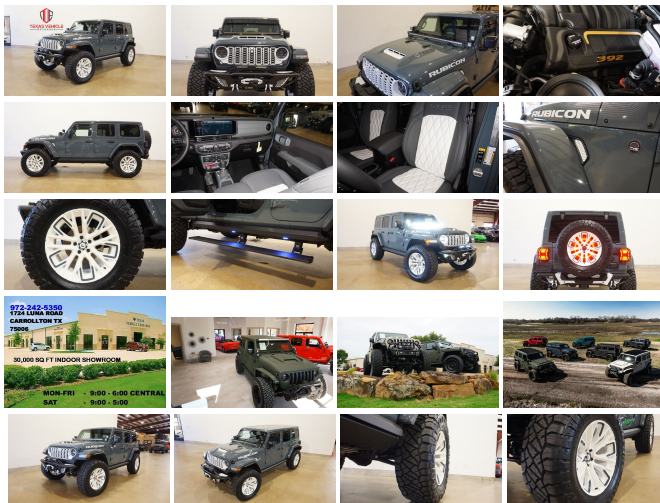
View this car on our website at tveauto.com/7295061/ebrochure



Our Price **\$140,900**

Specifications:

Year:	2024
VIN:	1C4RJXSJ9RW212151
Make:	Jeep
Stock:	212151
Model/Trim:	Wrangler Rubicon 392 4X4 HARD TOP,BUMPERS,LED'S,FUEL WHLS
Condition:	Pre-Owned
Body:	SUV
Exterior:	[PDS] Anvil Clear Coat
Engine:	HEMI 6.4L V8 470hp 470ft. lbs.
Interior:	Gray Leather
Transmission:	8-Speed Shifttable Automatic
Mileage:	291
Drivetrain:	4 Wheel Drive
Economy:	City 13 / Highway 16



NATION WIDE FINANCING

SUBMIT CREDIT APP [WWW.TVEAUTO.COM](https://www.tveauto.com)

OR CALL 972-242-5350

"ANVIL CLEAR COAT EDITION"

CUSTOM BUILT 2024 JEEP WRANGLER JL
UNLIMITED RUBICON 4X4 WITH 27X
PACKAGE

UPGRADES INCLUDE:

- * ANVIL CLEAR COAT WITH BRIGHT WHITE ACCENTS
- * 6.4L V8 SRT HEMI ENGINE
- * PAINTED TO MATCH 3 PIECE HARD TOP
- * CUSTOM ALEA GRAY & WHITE LEATHER WITH WHITE STITCHING
- * INTERIOR PIECES CUSTOM PAINTED ANVIL PEARL COAT
- * FACTORY REMOTE START
- * REMOTE PROXIMITY KEYLESS ENTRY
- * COLD WEATHER GROUP
- * LED LIGHTING GROUP
- * SAFETY GROUP
- * ADVANCED SAFETY GROUP
- * FORWARD FACING TRAIL CAM
- * FACTORY 12.3 INCH TOUCH SCREEN NAVIGATION WITH HD AM/FM/SIRIUS STEREO & ALPINE PREMIUM AUDIO SYSTEM
- * FACTORY BACK-UP CAMERA
- * U-CONNECT
- * SMITTYBILT APOLLO JL FRONT BUMPER WITH 2 MINI LED LIGHT BARS & LED FOGLIGHTS
- * FRONT D-RINGS & ISOLATORS (BRIGHT WHITE)
- * SMITTYBILT NEW GEN 3 "X20" 10,000 LB WATERPROOF AND WIRELESS CONTROL WINCH WITH SYNTHETIC ROPE
- * FACTOR 55 PROLINK (BLACK)
- * FACTORY MESH GRILLE PAINTED BRIGHT WHITE
- * FACTORY LED HEADLIGHTS
- * RUGGED RIDGE BLACK HEADLIGHT GUARDS
- * FACTORY HOOD WITH AIR INTAKE

SCOOP

- * PAINTED TO MATCH FENDER FLARES
- * TERAFLX FALCON SERIES 3 SHOCKS & RESERVOIRS
- * TERAFLX FALCON STABILIZER KIT
- * SUSPENSION PARTS PAINTED (ANVIL PEARL COAT)
- * MOPAR AUXILIARY SWITCH BANK KIT
- * 50" LED LIGHT BAR AND 4 RIGID INDUSTRIES DUALY D2 LED PILLAR LIGHTS (LIGHT BRACKETS PAINTED TO MATCH)
- * AMP RESEARCH POWERSTEP XL RUNNING BOARDS WITH LED LIGHT KIT
- * EVOLUTION 2 BLACK LED TAIL LIGHTS
- * RUGGED RIDGE BLACK TAIL LIGHT GUARDS
- * RUGGED RIDGE SPARTACUS HD HINGE KIT
- * RUGGED RIDGE LED THIRD BRAKE LIGHT RING
- * SMITTYBILT APOLLO JL REAR BUMPER WITH REAR PARK DISTANCE SENSORS
- * REAR D-RINGS & ISOLATORS (BRIGHT WHITE)
- * ALL WEATHER FLOOR MATS
- * TAZER JL PROGRAMMER WITH SPEEDOMETER CALIBRATION
- * 20" FUEL BRIGHT WHITE "REBAR 5" WHEELS
- * BRAND NEW NITTO RIDGE GRAPPLER 37X13.50R/20 TIRES

WE BUILD EVERY JEEP WITH PRIDE! DO NOT HESITATE TO CALL US WITH THIS JEEP BUILD. WE CAN MAKE CHANGES TO THIS JEEP BUILD OR CUSTOM BUILD ANY

THIS JEEP BUILD OR CUSTOM BUILD ANY JEEP TO YOUR PREFERENCE. GIVE US A CALL @ 972-242-5350 OR STOP BY FOR A TEST DRIVE. 1724 LUNA RD IN CARROLLTON - 2 MILES NORTH OF 635.

2024 Jeep Wrangler Rubicon 392 4X4 HARD TOP,BUMPERS,LED'S,FUEL WHLS
Texas Vehicle Exchange - 972-242-5350 - View this car on our website at veauto.com/7295061/ebrochure

Vehicle History Report : as Of 04/27/2024



Snapshot

2024 JEEP WRANGLER RUBICON 392



No accidents or damage reported to CARFAX



Well maintained vehicle



CARFAX 1-Owner vehicle



Corporate vehicle



Last owned in Montana



19 Last reported odometer reading



FREE CARFAX Report

See the full CARFAX Report for additional information

*carfax Snapshot is a reflection of available information on the date the report was pulled. carfax is constantly being updated with new information and is subject to change at any time.

Our Location :



2024 Jeep Wrangler Rubicon 392 4X4 HARD TOP,BUMPERS,LED'S,FUEL WHLS
Texas Vehicle Exchange - 972-242-5350 - View this car on our website at veauto.com/7295061/ebrochure

Installed Options

Interior

- Air filtration- Front air conditioning: automatic climate control- Rear vents: second row
- Floor mat material: carpet- Floor mats: front- Heated steering wheel
- Parking brake trim: leather- Shift knob trim: leather- Adaptive cruise control
- Adaptive stop and go cruise control: semi-automatic- Ambient lighting- Cargo area light
- Footwell lights- Power outlet(s): 115V rear- Power steering: variable/speed-proportional
- Push-button start- Rearview mirror: auto-dimming- Remote engine start
- Steering wheel: tilt and telescopic- Tool kit
- Universal remote transmitter: Homelink - garage door opener - Clock- Compass
- Customizable instrument cluster- Digital odometer- External temperature display
- Instrument cluster screen size: 7 in.- Multi-function display- Trip odometer
- Driver seat: heated- Driver seat power adjustments: 12- Front seat type: bucket
- Passenger seat: heated- Passenger seat power adjustments: 12- Rear seat folding: split
- Rear seat type: 60-40 split bench - Upholstery: leather-trimmed

Exterior

- Hood scoop- Running boards- Daytime running lights: LED
- Exterior entry lights: approach lamps- Front fog lights: LED- Taillights: LED
- Side mirrors: heated- Removable roof: hard top- Spare tire size: full-size matching
- Spare wheel type: aluminum alloy- Tire Pressure Monitoring System
- Wheels: painted aluminum alloy- Front wipers: variable intermittent
- Laminated glass: acoustic windshield- Liftgate window: manual flip-up
- Power windows: safety reverse- Rear wiper: intermittent- Solar-tinted glass: front
- Tinted glass: windshield- Window defogger: rear

Option Packages

Factory Installed Packages

Anvil Clear Coat Paint	\$595
MOPAR Performance Satin Black Grille	\$325
MOPAR All-Weather Floor Mats	\$170
Quick Order Package 27X Includes vehicle with standard equipment, 6.4L V8 HEMI engine, and 8-speed automatic transmission.	
Option Packages Total	\$1,090

Texas Vehicle Exchange

tveauto.com

972-242-5350

1724 Luna Road

Carrollton, TX 75006

© 2024 AutoRevo - All rights reserved. - Powered by AutoRevo