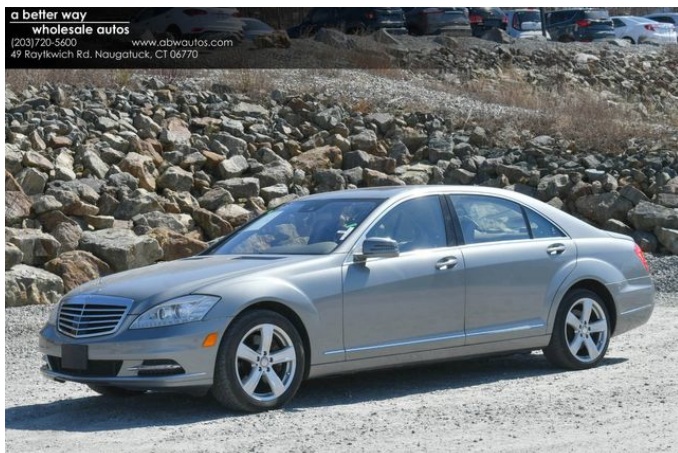


## 2013 Mercedes-Benz S-Class S 550

View this car on our website at [abwautos.com/7294657/ebrochure](http://abwautos.com/7294657/ebrochure)



Our Price **\$15,995**

### Specifications:

<b>Year:</b>	2013
<b>VIN:</b>	WDDNG7DB6DA535765
<b>Make:</b>	Mercedes-Benz
<b>Stock:</b>	535765A
<b>Model/Trim:</b>	S-Class S 550
<b>Condition:</b>	Pre-Owned
<b>Body:</b>	Sedan
<b>Exterior:</b>	Gray
<b>Engine:</b>	4.6L V8 Twin Turbo 429hp 516ft. lbs.
<b>Interior:</b>	Gray Leather
<b>Transmission:</b>	Automatic
<b>Mileage:</b>	51,200
<b>Drivetrain:</b>	Rear Wheel Drive
<b>Economy:</b>	City 15 / Highway 25

- Pristine 2013 Mercedes-Benz S-Class S 550 with only 51,200 miles
- Sleek gray exterior paired with luxurious gray leather interior
- Powerful 4.6L V8 Twin Turbo engine delivering 429 horsepower
- Fully loaded with high-end features including night vision, active suspension, and harman/kardon audio system
- Winner of Edmunds's Top Recommended Sedans and KBB's Most Refined Luxury Brand

Immerse yourself in the epitome of luxury and performance with this meticulously maintained 2013 Mercedes-Benz S-Class S 550. With a mere 51,200 miles on the odometer, this vehicle is a stunning example of the brand's commitment to excellence and innovation. The elegant gray exterior exudes sophistication, while the sumptuous gray leather interior invites you into a world of comfort and style.

Under the hood lies a potent 4.6L V8 Twin Turbo engine, a powerhouse that generates an exhilarating 429 horsepower and 516 ft. lbs. of torque. Paired with a seamless automatic transmission, this S-Class delivers a driving experience that's both dynamic and smooth, ensuring that every journey is as pleasurable as it is memorable.

The S 550 doesn't just stop at performance; it's also packed with an array of manufacturer options and packages that elevate your driving experience to new heights. The leather upholstery defines luxury, cradling you in comfort as you navigate the roads. For those night-time adventures, the night vision enhancement system provides an extra layer of security, allowing you to see beyond the reach of your headlights.

Riding on stylish aluminum alloy wheels, this vehicle boasts an active

suspension system and air suspension that adapt to the road conditions, providing a ride quality that is both supple and controlled. The hard drive-based navigation system ensures you're always on the right path, while the premium harman/kardon sound system, with 14 speakers, envelops you in crystal-clear audio.

The driver's seat offers 14 power adjustments, allowing you to find your perfect driving position with ease. The steering wheel, trimmed in luxurious leather, includes voice-operated hands-free phone call integration, keeping you connected while your focus remains on the road. Automatic climate control with dual zones ensures both you and your passengers are comfortable, regardless of the weather outside.

Safety and convenience are paramount in the S-Class, with features like the Driver Attention Alert system that monitors your alertness, and Bluetooth wireless data link for effortless connectivity.

This vehicle has not only been a personal choice for discerning drivers but also a critically acclaimed model, having been awarded Edmunds's Top Recommended Sedans and Kelley Blue Book's Brand Image Awards for the Most Refined Luxury Brand.

Don't miss your chance to own a piece of automotive excellence. This 2013 Mercedes-Benz S-Class S 550 is a perfect blend of performance, luxury, and technology, designed to deliver an unmatched driving experience. It's not just a car; it's a statement. Make it yours today and drive not just in comfort, but in style.

For sale at A Better Way Wholesale Autos - 2023 DealerRater Consumer Satisfaction Award winner - Connecticut's highest volume independent auto dealer! We have the area's largest selection of pre-owned vehicles at the lowest prices available, over 700 in stock to choose from! Financing for all credit tiers and extended warranties available. Please contact our sales department for more information about this vehicle or the rest of our inventory. Call 203-720-5600, view our website [www.abwautos.com](http://www.abwautos.com), or visit our showroom in Naugatuck, CT. Open 7 days a week!

---

2013 Mercedes-Benz S-Class S 550

A Better Way Wholesale Autos-CT - 203-720-5600 - View this car on our website at [abwautos.com/7294657/ebrochure](http://abwautos.com/7294657/ebrochure)

## Our Location :



2013 Mercedes-Benz S-Class S 550

A Better Way Wholesale Autos-CT - 203-720-5600 - View this car on our website at [abwautos.com/7294657/ebrochure](http://abwautos.com/7294657/ebrochure)

## Installed Options

### Interior

- Air filtration: active charcoal- Front air conditioning: automatic climate control
- Front air conditioning zones: dual- Rear vents: second row
- Armrests: rear center folding with storage- Center console trim: leather- Dash trim: alloy
- Door trim: alloy- Floor mat material: carpet- Floor mats: front- Interior accents: leather
- Shift knob trim: alloy- Steering wheel trim: leather- Ambient lighting- Cargo area light
- Cruise control- Memorized settings: 3 driver- Multi-function remote: keyless entry
- Power outlet(s): 12V front- Power steering: variable/speed-proportional
- Rearview mirror: auto-dimming- Steering wheel: tilt and telescopic
- Sunshade: power rear window- Universal remote transmitter- Clock- Compass
- Digital odometer- External temperature display- Multi-function display- Trip odometer
- Driver seat: heated- Driver seat power adjustments: 14- Front seat type: bucket
- Passenger seat: heated- Passenger seat power adjustments: 14- Rear seat type: bench
- Upholstery: leather

### Exterior

- Front bumper color: body-color- Mirror color: body-color- Daytime running lights
- Exterior entry lights: approach lamps- Front fog lights- Headlight cleaners
- Rear fog lights- Taillights: LED- Side mirror adjustments: power- Side mirrors: heated
- Tire Pressure Monitoring System- Wheels: aluminum alloy- Front wipers: rain sensing
- Heated windshield washer jets- Heated windshield wiper rests- Window defogger: rear

REGARDING STATE STATUTE AND REGULATORY COMPLIANCE: THIS ADVERTISEMENT DOES NOT CONSTITUTE AN OFFER TO SELL OR PURCHASE A VEHICLE. AN OFFER FOR SALE OR PURCHASE MAY ONLY BE MADE IN PERSON IN OUR SHOWROOM VIA THE PRESENTATION OF A PURCHASE ORDER, COMPLETED IN ITS ENTIRETY. Some vehicles may still be in process and therefore may not be available for immediate sale. Included Accessories: We try our best to procure books and extra keys from the previous owners. With that said, we do not always have spare keys, books, floor mats, or other accessories for every vehicle. In most cases we can only provide the accessories that are photographed. For instance, if we show a navigation display with a map, there is a navigation disc with the car. If you do not see it, assume the item is not

included. We encourage you to email or call us if you are concerned about specific items like floor mats, spare keys, nav discs, DVD headsets, etc. The description of vehicles provided by AutoRevo is generated through the use of artificial intelligence and machine learning algorithms. While every effort is made to ensure accuracy, AutoRevo cannot guarantee the completeness or reliability of the information provided. The description is intended to be used as a general guide and should not be relied upon as a substitute for independent investigation and verification. Neither A Better Way Wholesale Autos nor AutoRevo shall be liable for any errors or omissions in the description and makes no representation or warranty, express or implied, about the accuracy, reliability, completeness, or timeliness of the information. The user assumes all risks associated with the use of the information provided. Fuel Economy: MPG based on and sourced from&nbsp;EPA mileage estimates. Use for comparison purposes only. Your actual mileage will vary depending on driving habits and vehicle maintenance. Advertised price does not include state or local taxes, registration costs or dealer conveyance fee of \$798.00. Some vehicles in our inventory have been used as a daily rental. See commercially available history reports to see if this disclaimer applies to any particular vehicle.

---

A Better Way Wholesale Autos-CT

[abwautos.com](http://abwautos.com)

203-720-5600

49 Raytkwich Rd

Naugatuck, Connecticut 06770

© 2024 AutoRevo - All rights reserved. - Powered by AutoRevo