

2012 Chevrolet Silverado 2500HD Work Truck

View this car on our website at montanamotormall.com/7294166/ebrochure

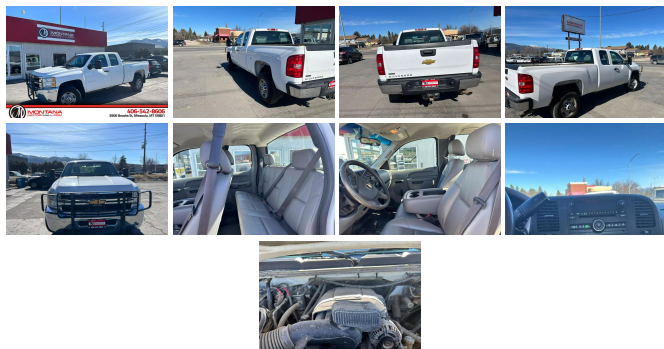


Our Price **\$18,995**

Specifications:

Year:	2012
VIN:	1GC2KVEG0CZ285692
Make:	Chevrolet
Stock:	285692
Model/Trim:	Silverado 2500HD Work Truck
Condition:	Pre-Owned
Body:	Pickup Truck
Exterior:	White
Engine:	6.0L V8 360hp 380ft. lbs.
Interior:	Gray Vinyl
Transmission:	6-Speed Shiftable Automatic
Mileage:	123,496
Drivetrain:	4 Wheel Drive

Vehicle Runs Well, Smooth ride, Must test drive, Arctic cold a/c, Fully Loaded, Drives great



2012 Chevrolet Silverado 2500HD Work Truck

Montana Motor Mall - 406-542-8606 - View this car on our website at montanamotormall.com/7294166/ebrochure

Our Location :



2012 Chevrolet Silverado 2500HD Work Truck

Montana Motor Mall - 406-542-8606 - View this car on our website at montanamotormall.com/7294166/ebrochure

Installed Options

Interior

- Front air conditioning: automatic climate control- Power outlet(s): two 12V
- Power steering- Steering wheel mounted controls: paddle shifter- Trip odometer
- Front seat type: 40-20-40 split bench - Rear seat folding
- Rear seat type: 60-40 split bench

Exterior

- Front bumper color: chrome- Pickup bed light- Daytime running lights
- Spare wheel type: steel- Tire Pressure Monitoring System- Wheels: steel
- Solar-tinted glass

Please understand, we do our professional best to describe in detail the condition of our vehicles, however, we are only human and these are used vehicles. Therefore, Montana Motor Mall, and its employees, will not be held accountable for errors or omissions in the description of the above vehicle or typographical errors in any of our vehicle listings. All vehicle options, specs, features, color descriptions, history, paint history, maintenance records and manufacturer's warranty information should be researched and confirmed by the buyer or third party service before completing the vehicle purchase. Helpful research information can be found at <http://www.edmunds.com/> Edmunds.com http://www.autocheck.com/consumers/gatewayAction.do?siteID=0&WT.mc_id=0 AutoCheck.com <http://carchex.com/> CarChex.com <http://carfax.com/> CarFax.com, etc.

At our dealership we work very hard to accurately describe our vehicles through text descriptions and elaborate photos. We hand select each vehicle we put on eBay. The vehicle shown is ALWAYS the vehicle being sold. When you purchase any pre-

owned vehicle it is not a new vehicle. Any pre-owned vehicle can/will have normal wear such as, but not limited to, minor scratches, scuffs, chips and regular interior wear. Our dealership works very hard to accurately describe our vehicles through text descriptions and elaborate photos. It has normal wear, which may include a few scattered rock chips, light scuffs, and gentle interior wear, our policy is to disclose anything beyond that and we encourage pre-purchase inspections. Please look over the photos carefully as they are part of the description. Our sales staff in Missoula, Montana is available to assist in answering any specific cosmetic questions and will gladly walk around the vehicle to give you a more accurate description BEFORE a deposit is left.



Note: Our listing software provider allows the VIN to decode the ORIGINAL FACTORY EQUIPMENT that this vehicle had when it rolled off the factory line. There may/may not be additional dealer equipment that was added by the original selling dealer that will not be listed in this section. There may/may not also have items listed as original factory equipment that are no longer with the vehicle we are currently selling. For example: 2 sets of keys, keyless entry remotes, owner's manual, factory floor mats, Navigation discs, first aid kits, factory tires/size/load rating, etc. Please refer to the photos we have taken or ask us your specific concern to be certain there is no confusion. We will not be responsible for any discrepancies between the Original Factory Equipment section and what is presented in the photos or description. Please do not assume and allow us to put our answers to your specific concerns in writing. Montana Motor Mall is fully responsible for all content in this listing. Human error is possible and we reserve the right to reverse any sale based on pricing/listing error which can occur at any time without notice. All inventory is listed for sale locally, therefore all are subject to sale at any time and may not be available. Everyone is encouraged to call with questions or concerns.

Please understand, we do our very best to describe in detail the condition of our vehicles, however, we are only human and these are used vehicles, therefore, Montana Motor Mall, and their employees or agents will not be held accountable for errors or omissions in the description of the above vehicle or typographical errors in any of our vehicle listings. MONTANA MOTOR MALL MAKES EVERY EFFORT TO BE AS TRANSPARENT AS POSSIBLE WHEN OFFERING INFORMATION ABOUT THE INVENTORY ON OUR SITE. WE WILL DISCLOSE WHAT WE KNOW AND WHAT WE HAVE LEARNED REGARDING EACH VEHICLE, WHETHER IT IS PAINTWORK, PERFORMANCE ENHANCING EQUIPMENT OR ALTERED EXHAUST / EMISSIONS. WE DO NOT INSTALL ANY OF THIS TYPE OF EQUIPMENT, NOR DO WE TEST ITS PERFORMANCE. WE RECOMMEND AN INDEPENDENT INSPECTION BUT WE DO NOT REQUIRE YOU TO HAVE ONE DONE, HOWEVER WE WILL NOT BE HELD RESPONSIBLE FOR ANY FINDINGS AFTERWARDS SHOULD YOU CHOOSE TO DISCARD YOUR RIGHT TO HAVE ONE DONE. All vehicle options (power opts, cd players/changers, audio equipment, entertainment systems/dvd, navigation systems/nav dvd, etc), specs, features, color descriptions, history, paint history, maintenance records and manufacturer's warranty information should be researched and confirmed by the buyer or third party service before completing purchase. Helpful research information can be found at Edmunds.com, AutoCheck.com, carchex.com, CarFax.com, etc.

At our dealership we work very hard to accurately describe our vehicles through text descriptions and elaborate photos. We hand select each vehicle we put on eBay. The vehicle shown is ALWAYS the vehicle being sold. Please look over the photos carefully as they are part of the description. When you purchase any pre-owned vehicle it is not a new vehicle. Any pre-owned vehicle can/will have normal wear, which may include, but not limited to, rock chips, scratches, scuffs, and minor interior wear. Our policy is to disclose anything beyond that and we encourage pre-purchase inspections.

When fresh inventory arrives, we do our best to inspect all power options, DVD systems, audio equipment, NAV systems, etc., however AAB will not be held liable or responsible for any of these items. We will check for and disclose paint work found on any vehicle, but keep in mind - this is an imperfect science. Please bear in mind that often truck owners may choose to alter factory emissions and/or exhaust to enhance performance or fuel economy. We often do acquire trucks that have these performance enhancing equipment already installed. This equipment may alter original emissions equipment or void factory warranties. We do not test or alter this equipment. If this is a concern of yours, please exercise your right to have a pre-purchase inspection prior to leaving your deposit. Our sales staff is available to assist in answering any specific cosmetic questions and will gladly walk around a vehicle to give you a more accurate description.

BEFORE a deposit is left. Ultimately, it is up to the potential buyer to do their due diligence. Montana Motor Mall does not want to hide anything and we encourage everyone to have a pre-buyer's inspection done before purchase.

Montana Motor Mall
montanamotormall.com
406-542-8606
3906 Brooks St
Missoula, MT 59801

© 2024 AutoRevo - All rights reserved. - Powered by AutoRevo