

2022 Toyota GR Supra 3.0 Premium

View this car on our website at autosourcehawaii.com/7292491/ebrochure



Our Price **\$54,995**

Retail Value **~~\$59,995~~**

Specifications:

Year:	2022
VIN:	WZ1DB0C09NW051185
Make:	Toyota
Stock:	T000043
Model/Trim:	GR Supra 3.0 Premium
Condition:	Pre-Owned
Body:	Coupe
Exterior:	Nitro Yellow
Engine:	3.0L Turbo I6 382hp 368ft. lbs.
Interior:	Black Leather
Transmission:	8-Speed Shiftable Automatic
Mileage:	8,635
Drivetrain:	Rear Wheel Drive
Economy:	City 22 / Highway 30

****Unleash the Thrill: 2022 Toyota GR Supra 3.0 Premium****

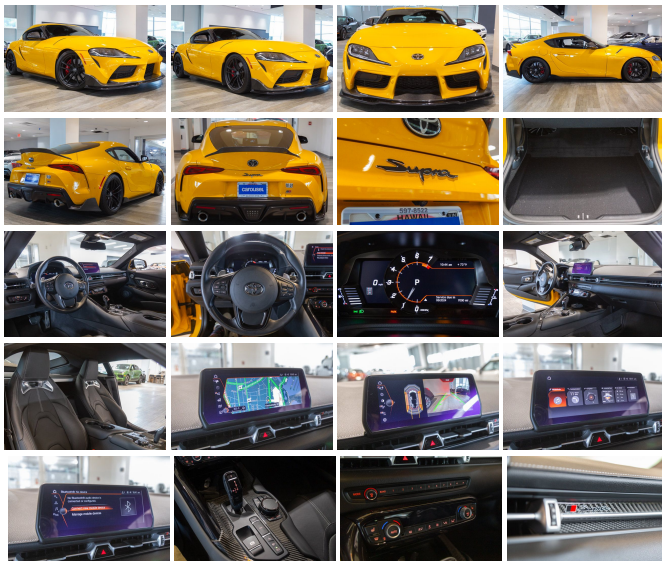
Ladies and gentlemen, enthusiasts, and daydreamers, turn your attention to the pulse-quickenning spectacle that is the 2022 Toyota GR Supra 3.0 Premium. With a mere 8,635 miles on the odometer, this almost-new machine is not just a car; it's a precision-crafted instrument of exhilaration, ready to amplify your driving experience to symphonic heights.

Draped in an eye-catching yellow exterior, this Supra isn't just a vehicle; it's a statement. A statement that says you dare to stand out, you embrace performance, and you live for the thrill of every sharp turn and straightaway. The body is sculpted to perfection, with ground effects and lower spoilers that hint at the car's aerodynamic prowess, while the body-color front bumper adds a touch of elegance to its aggressive stance.

The allure doesn't stop at the surface. Slide into the cockpit and you'll be greeted by a sleek black interior that promises comfort without compromising on sportiness. Every detail, from the driver side auto-dimming side mirror to the power adjustments, ensures that your focus remains on the road ahead, where it belongs.

Under the hood lies the heart of this beast – a 3.0L Turbo I6 engine that roars to life with 382 horsepower and 368 ft. lbs. of torque. Paired with an 8-Speed Shiftable Automatic transmission, this Supra delivers a driving experience that's as smooth as it is fierce, allowing you to harness its power with precision and ease.

But what's power without control? The LED taillights and daytime



But what's power without control? The LED taillights and daytime running lights ensure you're seen as more than a blur by onlookers, while the approach lamps welcome you back after every adrenaline-fueled adventure. The dual-tip exhaust doesn't just look good; it sings a tune that will stir the soul of any true car lover.

Technology isn't an afterthought in this modern marvel. With an 8.8-inch infotainment screen at your fingertips, Bluetooth connectivity for your devices, and a 10-speaker sound system with digital sound processing, every journey becomes a personal concert. And with SiriusXM satellite radio, the soundtrack to your drives is as limitless as the road itself.

Let's talk accolades. The 2022 Toyota GR Supra doesn't just promise excellence; it delivers, as evidenced by Kelley Blue Book's recognition for Best Resale Value and 5-Year Cost to Own. These awards speak volumes, assuring you that your investment is not only thrilling but also smart.

This Supra isn't just a car. It's a companion for those who demand more from their driving experience. It's a canvas for those who paint their legacy on the asphalt. It's a trophy for those who know that some things in life are worth the chase.

Don't let this opportunity pass you by. The 2022 Toyota GR Supra 3.0 Premium is here, but it's not here for long. It's time to ignite your passion, take the wheel, and make every drive a victory lap. Contact us today and be one step closer to owning the ride that sets your heart racing.

2022 Toyota GR Supra 3.0 Premium

Autosource Hawaii - (808) 597-8522 - View this car on our website at autosourcehawaii.com/7292491/ebrochure

Vehicle History Report : as Of 05/18/2024

CARFAX

Snapshot

2022 TOYOTA GR SUPRA 3.0 PREMIUM



No accidents or damage reported to CARFAX



Regular oil changes



2 Previous owners



Personal vehicle



Last owned in Hawaii



8,635 Last reported odometer reading



FREE CARFAX Report

See the full CARFAX Report for additional information

*carfax Snapshot is a reflection of available information on the date the report was pulled. carfax is constantly being updated with new information and is subject to change at any time.

Our Location :



2022 Toyota GR Supra 3.0 Premium

Autosource Hawaii - (808) 597-8522 - View this car on our website at autosourcehawaii.com/7292491/ebrochure

Installed Options

Interior

- Air filtration- Front air conditioning: automatic climate control
- Front air conditioning zones: dual- Center console trim: carbon fiber
- Floor mat material: carpet- Floor mats: front- Interior accents: carbon fiber
- Steering wheel trim: leather- Cargo area light- Cargo cover- Cruise control
- Memorized settings: 2 driver- Power outlet(s): 12V front
- Power steering: variable/speed-proportional- Push-button start
- Rearview mirror: auto-dimming- Steering wheel: tilt and telescopic
- Universal remote transmitter: garage door opener - Clock- Digital odometer
- External temperature display- Instrument cluster screen size: 8.8 in.
- Multi-function display- Trip odometer- Driver seat power adjustments: 14
- Front seat type: sport bucket - Passenger seat power adjustments: 14

Exterior

- Exhaust: dual tip- Front bumper color: body-color- Ground effects/lower spoilers
- Daytime running lights: LED- Exterior entry lights: approach lamps- Taillights: LED
- Side mirror adjustments: power- Side mirrors: driver side auto-dimming
- Spare tire kit: inflator kit- Tire Pressure Monitoring System- Front wipers: rain sensing
- Window defogger: rear

Autosource Hawaii
autosourcehawaii.com
(808) 597-8522
1488 Kapiolani Blvd
Honolulu, HI 96814

© 2024 AutoRevo - All rights reserved. - Powered by AutoRevo