

## 2019 Hyundai SANTA FE Limited 2.4L AWD

View this car on our website at [certifiedautoplaaza.com/7291477/ebrochure](http://certifiedautoplaaza.com/7291477/ebrochure)

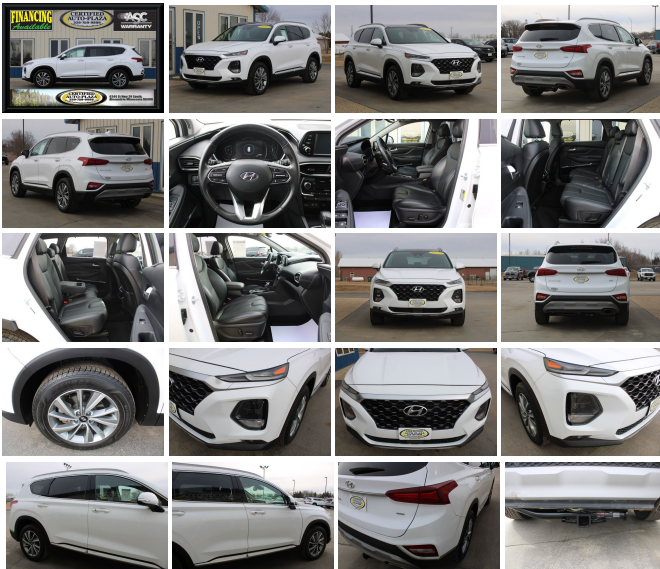


Our Price **\$18,995**

Retail Value **\$21,100**

### Specifications:

<b>Year:</b>	2019
<b>VIN:</b>	5NMS5CADXKH075675
<b>Make:</b>	Hyundai
<b>Stock:</b>	075675
<b>Model/Trim:</b>	SANTA FE Limited 2.4L AWD
<b>Condition:</b>	Pre-Owned
<b>Body:</b>	SUV
<b>Exterior:</b>	[WW8] Quartz White
<b>Engine:</b>	Theta II 2.4L I4 185hp 178ft. lbs.
<b>Interior:</b>	Black Leather
<b>Transmission:</b>	8-Speed Shifttable Automatic
<b>Mileage:</b>	95,504
<b>Drivetrain:</b>	All Wheel Drive
<b>Economy:</b>	City 21 / Highway 27



CERTIFIED PREOWNED — ALL WHEEL DRIVE — THETA II 2.4L I4 ENGINE — 8-SPEED AUTOMATIC TRANSMISSION — QUARTZ WHITE EXTERIOR — BLACK LEATHER INTERIOR — POWER ADJUSTABLE FRONT SEATS — HEATED FRONT SEATS — HEATED SIDE MIRRORS — DUAL-ZONE AUTOMATIC CLIMATE CONTROLS — BLUE LINK INFOTAINMENT SYSTEM WITH 8" TOUCHSCREEN — BLUETOOTH — APPLE CARPLAY — ANDROID AUTO — AM/FM RADIO WITH SATELLITE CAPABILITY — INFINITY PREMIUM SOUND SYSTEM — VOICE OPERATED PHONE/MESSAGING ASSISTANCE — BACKUP CAMERA — REMOTE KEYLESS ENTRY — PUSH BUTTON START — UNIVERSAL GARAGE DOOR OPENER — STEERING WHEEL MOUNTED AUDIO CONTROLS — AUTOMATIC EMERGENCY BRAKING — BLIND SPOT SAFETY ALERT — REAR CROSS TRAFFIC ALERT — LANE KEEP ASSIST — PRE-COLLISION WARNING — FOG LIGHTS — CARGO COVER/SCREEN — CARGO NET — CARPETED FLOOR MATS — DUAL-PANE POWER SUNROOF — 18" ALLOY WHEELS — GOODYEAR ASSURANCE TIRES — EXCELLENT CONDITION!!

Step into the realm of elegance and performance with the 2019 Hyundai Santa Fe Limited 2.4L AWD, a midsize SUV that blends style, comfort, and reliability into one irresistible package. With its striking white exterior and luxurious black leather interior, this vehicle is a statement of sophistication on every journey.

As you approach this pristine white marvel, the Santa Fe's commanding presence is undeniable. The sleek lines and bold stance are a

testament to Hyundai's commitment to excellence in design. The allure of adventure is palpable, inviting you to slide into the sumptuous black leather seats that cradle you in comfort as you take the helm of this automotive masterpiece.

At the heart of this vehicle lies the robust Theta II 2.4L I4 engine, delivering a smooth 185 horsepower and 178 ft-lbs of torque, ensuring that power is always at your command. Paired with an 8-speed shiftable automatic transmission, this Santa Fe provides an effortlessly responsive and engaging driving experience. Whether navigating city streets or conquering snowy mountain passes, the All-Wheel Drive system offers unyielding traction and stability, empowering you with confidence in any condition.

But the Santa Fe's appeal goes beyond its impressive performance. This SUV comes adorned with a suite of manufacturer options and packages designed to enhance every aspect of your drive. From the advanced safety features to the state-of-the-art infotainment system, every detail has been meticulously crafted to provide an unparalleled driving experience.

Let the accolades speak for themselves. The 2019 Hyundai Santa Fe Limited 2.4L AWD has been showered with praise, earning the highest ranks in J.D. Power and Associates' Initial Quality and Vehicle Dependability Studies for the Midsize SUV Segment. These prestigious awards are a testament to the Santa Fe's exceptional build quality and customer satisfaction. Furthermore, it has been recognized by Kelley Blue Book as one of the Best Two-Row SUVs for Families and Best Family Cars, highlighting its versatility and family-friendly attributes.

When it comes to ownership, the Santa Fe continues to impress with Kelley Blue Book's 5-Year Cost to Own award for the Best Mid-Size SUV/Crossover category, ensuring that your investment is as wise as it is rewarding. This is a vehicle that not only meets your needs but anticipates them, making every drive a testament to Hyundai's commitment to excellence.

Imagine the adventures that await you in this 2019 Hyundai Santa Fe Limited 2.4L AWD. Picture the envious glances as you cruise by, the seamless connectivity that keeps you in touch with what matters, and the peace of mind that comes with owning a vehicle celebrated for its dependability and quality.

Don't let this opportunity pass you by. The 2019 Hyundai Santa Fe Limited 2.4L AWD is more than just a vehicle; it's a partner for life, a sanctuary on wheels, and a beacon of reliability. Make the choice to elevate your driving experience and embrace the journey ahead with confidence. Your new Santa Fe awaits.

---

2019 Hyundai SANTA FE Limited 2.4L AWD

Certified Auto Plaza - 320-759-9999 - View this car on our website at [certifiedautoplaza.com/7291477/ebrochure](https://www.certifiedautoplaza.com/7291477/ebrochure)

**Our Location :**



2019 Hyundai SANTA FE Limited 2.4L AWD

Certified Auto Plaza - 320-759-9999 - View this car on our website at [certifiedautoplaza.com/7291477/ebrochure](http://certifiedautoplaza.com/7291477/ebrochure)

**Installed Options**

**Interior**

- Air filtration: ionizing- Front air conditioning: automatic climate control
- Front air conditioning zones: dual- Rear vents: second row
- Armrests: rear center folding with storage- Door trim: alloy- Shift knob trim: leather
- Steering wheel trim: leather- Adaptive cruise control
- Adaptive stop and go cruise control: semi-automatic- Cargo area light- Cargo cover
- Memorized settings: liftgate- Power outlet(s): 12V cargo area
- Power steering: variable/speed-proportional- Push-button start
- Rearview mirror: auto-dimming- Steering wheel: tilt and telescopic
- Sunshade: side window- Universal remote transmitter: Homelink - garage door opener
- Clock- Compass- Digital odometer- External temperature display
- Instrument cluster screen size: 7 in.- Multi-function display- Trip odometer
- Driver seat: heated- Driver seat power adjustments: 8- Front seat type: bucket
- Passenger seat: heated- Passenger seat power adjustments: 8
- Rear seat folding: one-touch fold flat- Rear seat type: 60-40 split bench
- Upholstery: leather-trimmed

**Exterior**

- Door handle color: chrome- Front bumper color: body-color- Mirror color: body-color
- Rear spoiler: roofline- Daytime running lights: LED- Exterior entry lights: approach lamps
- Front fog lights: LED- Headlights: auto high beam dimmer- Taillights: LED
- Side mirrors: heated- Roof rails: silver- Spare wheel type: steel
- Tire Pressure Monitoring System- Wheels: aluminum alloy
- Front wipers: variable intermittent- Laminated glass: acoustic windshield
- Power windows: safety reverse- Rear privacy glass- Rear wiper: intermittent
- Solar-tinted glass: front- Window defogger: rear

**Option Packages**

**Factory Installed Packages**

Rear Bumper Applique	\$70
Cargo Cover/Screen	\$190
Cargo Net	\$50
Carpeted Floor Mats	\$125
<b>Option Packages Total</b>	<b>\$435</b>

