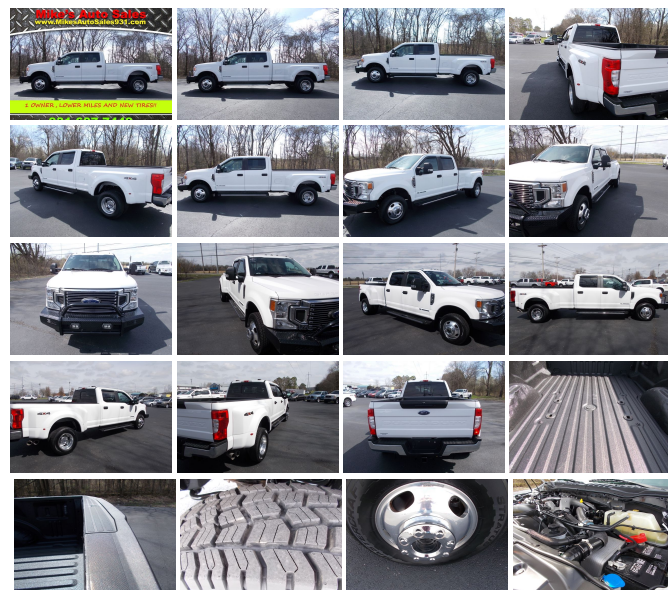


# 2020 Ford F-350 Super Duty XL

View this car on our website at [mikesautosales931.us/7291107/ebrochure](http://mikesautosales931.us/7291107/ebrochure)



Our Price **\$50,900**

## Specifications:

**Year:** 2020  
**VIN:** 1FT8W3DT6LEE72556  
**Make:** Ford  
**Stock:** 23824  
**Model/Trim:** F-350 Super Duty XL  
**Condition:** Pre-Owned  
**Body:** Pickup Truck  
**Exterior:** [Z1] Oxford White  
**Engine:** Power Stroke 6.7L Biodiesel Turbo V8  
475hp 1050ft. lbs.  
**Interior:** Medium Earth Gray Cloth  
**Transmission:** 10-Speed Shiftable Automatic  
**Mileage:** 55,894  
**Drivetrain:** 4 Wheel Drive

VIN# 1FT8W3DT6LEE72556

\*\*\*\* CLICK THE FOLLOWING LINK ([www.MikesAutoSales931.com](http://www.MikesAutoSales931.com)) TO BE DIRECTED TO OUR WEBSITE FOR MORE INFO, PHOTOS AND TO VERIFY AVAILABILITY OR FEEL FREE TO CALL OR TEXT 931-607-7448!! WE DO NOT OFFER ANY FINANCING OR PAYMENT OPTIONS, IT IS THE SOLE RESPONSIBILITY OF THE BUYER TO SECURE THEIR OWN FINANCING!! NICE CLEAN ONE OWNER TRADE IN AT LOCAL DODGE DEALER, CARFAX CERTIFIED!! 2020 FORD F-350 CREW CAB DUALY XL 4X4 LOADED WITH OPTIONS, POWERED BY A LONG LASTING HIGH OUTPUT 32 VALVE 6.7 POWERSTROKE TURBO DIESEL MAKING 440 HORSEPOWER PLUS 925 FOOT POUNDS OF TORQUE WITH A HEAVY DUTY TORQ - SHIFT 10 SPEED AUTOMATIC TRANSMISSION, DRIVEN BY 4.10 GEARS WITH LIMITED SLIP REAR AXLE, RIDING ON FACTORY FORGED ALLOY WHEELS WITH LIKE NEW TIRES AND FEATURING BELOW AVERAGE MILES FOR THE YEAR MODEL!! NO DOC FEES!! ALL TENNESSEE RESIDENTS ARE REQUIRED TO PAY SALES TAX IN ADDITION TO THE AGREED UPON SALES PRICE!! Unless this vehicle has Factory Warranty remaining, this vehicle is being sold as is, where is with no warranty, expressed written or implied. The seller shall not be responsible for the correct description, authenticity, genuineness, or defects herein, and makes no warranty in connection therewith. We do not sell new vehicles, therefore normal wear and tear should be anticipated. No allowance or set aside will be made on account of any incorrectness, imperfection, defect or damage. Any descriptions or representations are for identification purposes only and are not to be construed as a warranty of any type. It is the responsibility of the buyer to have thoroughly inspected the vehicle, and to have satisfied himself or herself as to the condition and value and to bid

based upon that judgment solely. The seller shall and will make every reasonable effort to disclose any known defects associated with this vehicle at the buyer's request prior to the close of sale. Seller assumes no responsibility for any repairs regardless of any oral statements about the vehicle. Call 931-684-8671 or go to [www.mikesautosales931.com](http://www.mikesautosales931.com) FOR MORE INFORMATION AND ADDITIONAL PHOTOS. Advertised price does not include tax, title or license.

Mike's Auto Sales is a local owned dealership that has been in business at the same location since first opening our doors in 1981. We specialize in Diesel and 4x4 Trucks plus pride ourselves on offering for sale the best quality used Cars, Vans, Suv's, and Trucks of all the dealers in Middle Tennessee. Drop by our dealership or call ahead if you would like to schedule an appointment. Feel free to compare our prices against the prices of other automobile dealerships in the area. Whether you are planning to buy now or will be buying in the future, Mike's Auto Sales offers the best selection of used Cars, Vans, SUVs and Trucks of any of the car lots in the area plus great prices; and our quality, sales and satisfied customers prove it!

From our convenient location at 1664 Fairfield Pk. Shelbyville, TN, we serve Murfreesboro, Franklin, Tullahoma, Winchester, Spring Hill, Nashville, Lebanon, Clarksville, Memphis, Jackson and the entire State of Tennessee. We also have a large customer base in the states of Alabama, Georgia, Kentucky, Illinois, Arkansas, Texas, California, Hawaii, Missouri, Mississippi, North Carolina, South Carolina, Virginia, West Virginia, New York, Washington, Wisconsin and literally all the 50 States plus several other Foreign Countries that we have helped find great pre-owned vehicles. Stop in today and See for yourself why dealing with us really is a new way to buy a vehicle! At our dealership we work very hard to accurately describe our vehicles through text descriptions and elaborate photos. When you purchase a pre-owned vehicle it is not a new vehicle. Any used vehicle can have normal wear and blemishes. Before placing a bid please read the descriptions thoroughly and view all pictures.

---

2020 Ford F-350 Super Duty XL


Mike's Auto Sales - 9316848671 - View this car on our website at [mikesautosales931.us/7291107/ebrochure](http://mikesautosales931.us/7291107/ebrochure)


**Vehicle History Report : as Of 04/27/2024**




**Snapshot**

**2020 FORD F-350 SUPER DUTY XL**


 No accidents or damage reported to CARFAX

 **11** Service history records

 At least 1 open recall

 **1** CARFAX 1-Owner vehicle

 Personal vehicle

 **55,894** Last reported odometer reading



**FREE CARFAX Report**

See the full CARFAX Report for additional information

\*carfax Snapshot is a reflection of available information on the date the report was pulled. carfax is constantly being updated with new information and is subject to change at any time.

**Our Location :**



2020 Ford F-350 Super Duty XL

Mike's Auto Sales - 9316848671 - View this car on our website at [mikesautosales931.us/7291107/ebrochure](https://mikesautosales931.us/7291107/ebrochure)

**Installed Options**

**Interior**

- Air filtration- Front air conditioning- Power outlet(s): 12V front- Power steering
- Steering wheel: tilt and telescopic- Clock- Digital odometer- External temperature display
- Powertrain hour meter- Front seat type: 40-20-40 split bench - Rear seat folding: folds up
- Rear seat type: 60-40 split bench

**Exterior**

- Pickup bed light- Tailgate: lift assist- Clearance lights- Roof-mounted lights
- Towing mirrors- Dual rear wheels- Spare wheel type: steel- Wheels: painted steel
- Front wipers: variable intermittent- Solar-tinted glass: front

**Option Packages**

**Factory Installed Packages**

SiriusXM Satellite Radio Includes a 5-year prepaid subscription to SiriusXM Traffic and Travel link. Service not available in AK/HI.	<b>\$185</b>
17 In. Forged Polished Aluminum Wheels Includes four 17 inch forged polished aluminum wheels with bright hub covers and center ornaments.	<b>\$600</b>
6 In. Chrome Tubular Running Boards	<b>\$695</b>

8 Ft. Long Bed

<b>LED Box Lighting</b> Includes LED center high mounted stop lamp (CHMSL).	<b>\$60</b>
<b>Power Sliding Rear Window</b>	<b>\$405</b>
<b>Privacy Glass</b>	<b>\$30</b>
<b>Tailgate Step</b> Includes Tailgate Assist with step and flip up grab bar.	<b>\$375</b>
<b>Cloth 40/20/40 Split Bench Seat</b> Includes cloth 40/20/40 split bench front seat.	<b>\$315</b>
<b>Cruise Control</b> Includes steering wheel mounted cruise control.	<b>\$235</b>
<b>Equipment Group 620A</b> Includes vehicle with standard equipment. Package price is included in the base vehicle MSRP. Required for ordering purposes.	
<b>Power Equipment Group</b> Includes accessory delay, power door locks, power tailgate lock, remote keyless entry, SecuriLock passive anti-theft system, inclination/intrusion sensors, power front row windows with one-touch up and down, power second row windows, manually telescoping two-way folding trailer tow mirrors with power and heated glass, heated convex spotter mirror, integrated clearance lamps and turn signals, and upgraded door trim panel. Deletes passenger side lock cylinder.	<b>\$1,125</b>
<b>STX Appearance Package</b> Includes 17 inch forged polished aluminum wheels, bright chrome hub covers, bright chrome grille, chrome front and rear bumpers, STX fender vent badge, and cruise control with steering wheel mounted controls.	<b>\$1,825</b>
<b>4.10 Limited Slip Axle Ratio</b>	<b>\$360</b>
<b>5th Wheel/Gooseneck Hitch Prep Package</b> Includes one frame under-bed cross member, five pickup bed attachment points with plugs, and one integrated 7-pin connector on drivers side pick-up bed wall.	<b>\$500</b>
<b>Upfitter Switches</b> Includes six (6) switches located in overhead console.	<b>\$165</b>
<b>Option Packages Total</b>	<b>\$6,875</b>

