

2009 Mercedes-Benz M-Class ML 350 4MATIC

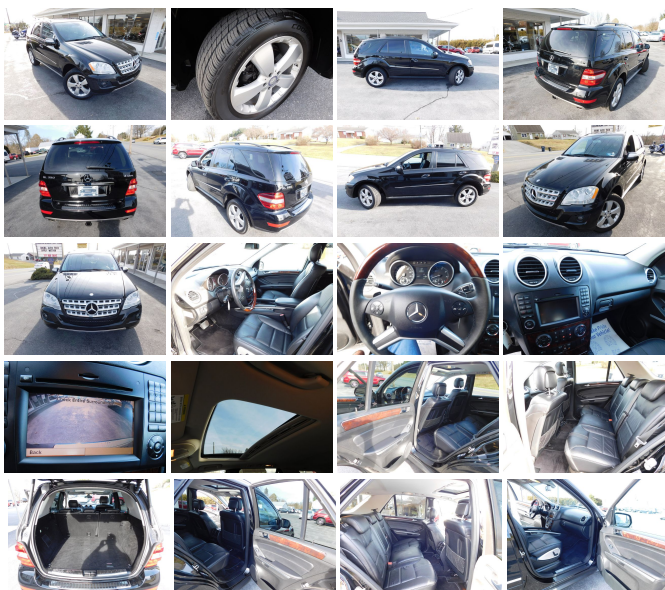
View this car on our website at oregonpikemotors.com/7290985/ebrochure



Our Price **\$7,995**

Specifications:

Year:	2009
VIN:	4JGBB86E49A507460
Make:	Mercedes-Benz
Stock:	P9363JA
Model/Trim:	M-Class ML 350 4MATIC
Condition:	Pre-Owned
Body:	SUV
Exterior:	BLACK
Engine:	3.5L V6 268hp 258ft. lbs.
Interior:	Leatherette
Transmission:	7-Speed Shifttable Automatic
Mileage:	142,023
Drivetrain:	All Wheel Drive
Economy:	City 15 / Highway 20



Step into luxury with this elegant 2009 Mercedes-Benz ML 350, showcased at Oregon Pike Motors Inc. This sophisticated black SUV is powered by a robust 3.5L 6-cylinder engine paired with a smooth 7-speed automatic transmission, providing a balanced blend of performance and comfort. Experience a suite of premium features including a moonroof that lets in natural light and fresh air, plush leather seats with dual power adjustments, and dual-zone automatic climate control to ensure both driver and passengers ride in comfort. Entertainment is provided by an AM/FM CD/MP3 stereo with a CD changer and premium sound system. Safety is paramount with active belts, anti-lock brakes, multiple airbags, and an immobilizer with keyless entry and alarm. Convenience options include cruise control, power steering, and power windows. The ML 350 also boasts premium wheels, privacy glass, and stylish signal mirrors, enhancing its already striking presence. For more information or to schedule a test drive, please contact Oregon Pike Motors Inc at 717-859-3600. Indulge in the perfect blend of luxury and utility with this exquisite Mercedes-Benz.

Vehicle History Report : as Of 05/19/2024

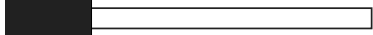


Snapshot

**2009 MERCEDES-BENZ M-CLASS ML 350
4MATIC**



Damage reported: minor damage



MINOR MODERATE SEVERE

28 Service history records



4 Previous owners



Types of owners: Personal lease,
Personal



142,023 Last reported odometer reading



FREE CARFAX Report

See the full CARFAX Report for additional information

*carfax Snapshot is a reflection of available information on the date the report was pulled. carfax is constantly being updated with new information and is subject to change at any time.

Our Location :



2009 Mercedes-Benz M-Class ML 350 4MATIC

Oregon Pike Motors - 717-859-3600 - View this car on our website at oregonpikemotors.com/7290985/ebrochure

Installed Options

Interior

- Air filtration: active charcoal- Front air conditioning: automatic climate control
- Front air conditioning zones: dual- Rear vents: second row
- Armrests: rear center folding with storage- Center console trim: alloy- Dash trim: wood
- Door trim: alloy- Floor mat material: carpet- Floor mats: front- Shift knob trim: alloy
- Steering wheel trim: leather- Cargo area light- Cargo cover: retractable- Cruise control
- Multi-function remote: keyless entry- Power outlet(s): 12V cargo area- Power steering
- Steering wheel: tilt and telescopic- Universal remote transmitter- Clock
- External temperature display- Trip odometer- Driver seat power adjustments: 8
- Front seat type: bucket- Passenger seat power adjustments: 8- Rear seat folding: split
- Rear seat type: 40-60 split bench - Upholstery: leatherette

Exterior

- Skid plate(s)- Daytime running lights- Exterior entry lights: approach lamps
- Front fog lights- Rear fog lights- Side mirror adjustments: power
- Side mirrors: driver side only heated- Roof rack crossbars: black- Spare wheel type: steel
- Tire Pressure Monitoring System- Front wipers: rain sensing
- Heated windshield washer jets- Rear privacy glass- Rear wiper: intermittent
- Window defogger: rear

SUBJECT TO APPROVAL

Oregon Pike Motors
oregonpikemotors.com
717-859-3600
3919 Oregon Pike
Ephrata, PA 17522
© 2024 AutoRevo - All rights reserved. - Powered by AutoRevo