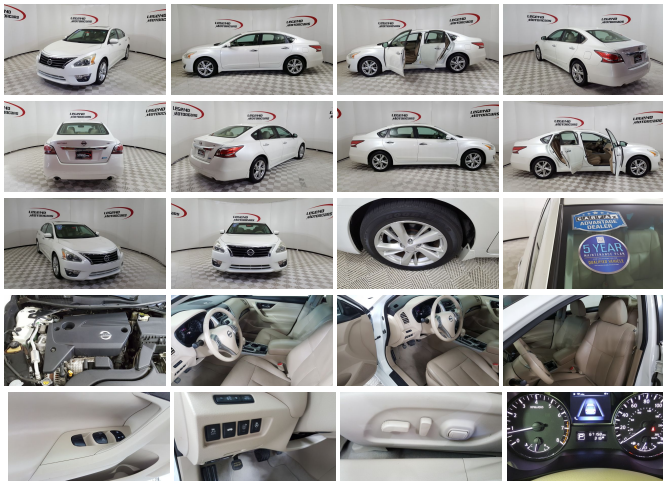


2014 Nissan Altima 2.5 SL

View this car on our website at legendmotorcars.com/7289962/ebrochure



Website Price **\$16,450**

Specifications:

Year:	2014
VIN:	1N4AL3AP8EC114719
Make:	Nissan
Stock:	18425
Model/Trim:	Altima 2.5 SL
Condition:	Pre-Owned
Body:	Sedan
Exterior:	[QAB] Pearl White
Engine:	2.5L
Interior:	Beige Leather
Mileage:	67,158
Drivetrain:	Front Wheel Drive
Economy:	City 27 / Highway 38

Come test drive this Clean, Stylish and Well Equipped 2014 Nissan Altima. This Altima is powered by a economical 2.5 liter dual overhead cam 16 valve I4 engine mated with a continuously variable (automatic) transmission. It is equipped with power windows and locks, tilt wheel/telescoping w/audio controls, cruise, power mirrors, front/side airbags, safety curtain, anti-lock brakes, traction control, push button start, power front seats, remote keyless entry, lane departure warning, heated steering wheel, heated front seats, Leather seats, Sunroof, Bluetooth, Navigation, Bose AM/FM CD w/aux audio jack/USB and Alloy wheels.

All of our vehicles undergo an extensive multi point inspection/reconditioning. We now offer a complimentary 5 year maintenance plan on all vehicles in stock. We specialize in Guaranteed approvals, affordable down payments and payment plans for most any budget. We also have a clean and clear title plus Free CarFax Buyback Guarantee. For more information please call 972-272-7500 or visit www.legendmotorcars.com. We Want to Earn Your Business!

2014 Nissan Altima 2.5 SL

Legend Motorcars Garland - 469-998-7370 - View this car on our website at legendmotorcars.com/7289962/ebrochure

Vehicle History Report : as Of 04/27/2024



Snapshot

2014 NISSAN ALTIMA 2.5 SL



Damage reported: minor damage



MINOR MODERATE SEVERE

16 Service history records



At least 1 open recall



2 Previous owners



67,142 Last reported odometer reading



FREE CARFAX Report

See the full CARFAX Report for additional information

*carfax Snapshot is a reflection of available information on the date the report was pulled. carfax is constantly being updated with new information and is subject to change at any time.

Our Location :



2014 Nissan Altima 2.5 SL

Legend Motorcars Garland - 469-998-7370 - View this car on our website at [legendmotorcars.com/7289962/ebrochure](https://www.legendmotorcars.com/7289962/ebrochure)

Installed Options

Interior

- Air filtration- Front air conditioning: automatic climate control
- Front air conditioning zones: dual- Rear vents: second row
- Armrests: rear center folding with storage- Heated steering wheel
- Interior accents: chrome- Shift knob trim: leather- Steering wheel trim: leather
- Ambient lighting- Cargo area light- Cruise control
- Multi-function remote: proximity entry system- Power outlet(s): two 12V front
- Power steering- Push-button start- Rearview mirror: auto-dimming- Remote engine start
- Steering wheel: tilt and telescopic
- Universal remote transmitter: Homelink - garage door opener - Clock- Compass
- Digital odometer- External temperature display- Multi-function display- Trip odometer
- Driver seat: heated- Driver seat power adjustments: 8- Front seat type: bucket
- Passenger seat: heated- Rear seat folding: split- Rear seat type: 60-40 split bench
- Upholstery: leather-trimmed

Exterior

- Door handle color: chrome- Exhaust: dual tip- Front bumper color: body-color
- Mirror color: body-color- Front fog lights- Taillights: LED- Side mirrors: heated
- Spare wheel type: steel- Tire Pressure Monitoring System- Wheels: aluminum alloy
- Front wipers: variable intermittent- Window defogger: rear

Option Packages

Factory Installed Packages

Moonroof Package

Includes power sliding moonroof with one-touch open/close and tilt feature. **\$800**

Technology Package

Includes Nissan Navigation System with 7 inch color touch-screen monitor and voice recognition with turn-by-turn navigation integration into Advanced Drive-Assist Display, in-dash rear view monitor, steering wheel mounted navigation menu controls, Blind Spot Warning (BSW), Moving Object Detection (MOD), Lane Departure Warning (LDW), NavTraffic, NavWeather, Points of Interest powered by Google, and Google Send-To-Car. **\$1,090**

Option Packages Total

\$1,890

Legend Motorcars Garland

legendmotorcars.com

469-998-7370

1901 Forest Lane

Garland, TX 75042

© 2024 AutoRevo - All rights reserved. - Powered by AutoRevo