



2017 Ford F-250 Super Duty XL

No-Haggle Price \$27,995

View this vehicle on our website at soundautowholesalers.com



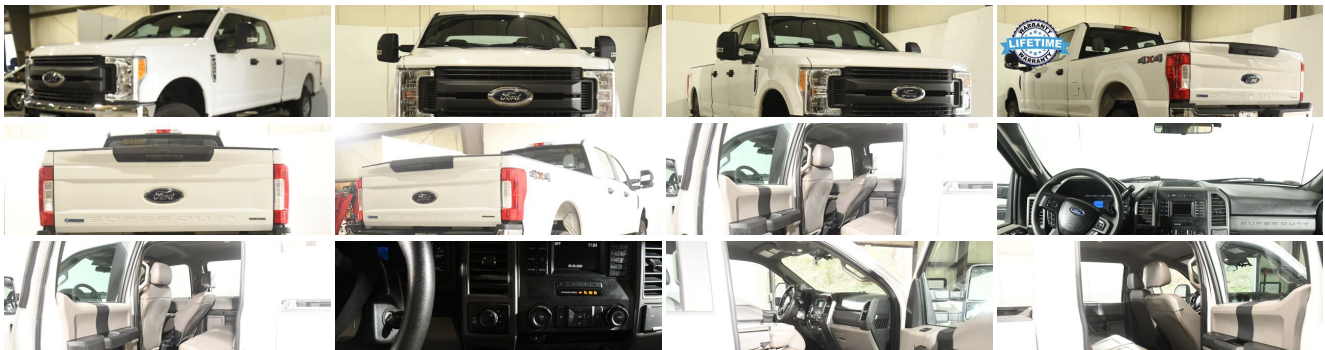
(203) 466-2622

139 W Main St, Branford, CT 06405

Photos

Details

Contact



Specifications:

Year:	2017
VIN:	1FT7W2B60HEE21113
Make:	Ford
Stock:	6204

Model/Trim:	F-250 Super Duty XL
Condition:	Pre-Owned
Body:	Pickup Truck
Exterior:	[Z1] Oxford White
Engine:	6.2L Flex Fuel V8 385hp 430ft. lbs.
Interior:	Medium Earth Gray Cloth
Transmission:	6-Speed Shiftable Automatic
Mileage:	90,012
Drivetrain:	4 Wheel Drive

Vehicle Description

Step into the realm of robust power and unmatched reliability with the 2017 Ford F-250 Super Duty XL, a beacon of strength in the world of heavy-duty trucks. With a mere 90,012 miles on the odometer, this pristine white champion is poised to take you on countless adventures without a hitch. Beneath the hood lies a formidable 6.2L Flex Fuel V8 engine, delivering a heart-thumping 385 horsepower and a remarkable 430 ft-lbs of torque. This powerhouse is seamlessly paired with a 6-Speed Shiftable Automatic transmission, ensuring that you have the smooth and responsive ride you deserve, whether you're navigating city streets or conquering rugged terrain. The exterior, a vision in white, is more than just a statement of style, it's a promise of durability. The gray cloth interior invites you to step in and enjoy the comfort and practicality that it offers. As you settle into the driver's seat, you'll feel the confidence that comes with being surrounded by modern safety features, including front side airbags and side curtain airbags, providing peace of mind for you and your passengers. The F-250 Super Duty XL is not just a vehicle; it's a versatile tool. Equipped with a trailer hitch, 4-pin trailer wiring, and robust towing mirrors, this truck is ready to handle your heaviest loads with ease. The part-time 4WD system, with its manual hi-lo selector, ensures that you maintain traction and control, no matter what the conditions. The off-road driving assist with hill ascent is your secret weapon for tackling steep inclines without breaking a sweat. Inside, the air conditioning keeps the cabin comfortable, while the 60-40 split bench rear seat offers flexible cargo and passenger options. The six total speakers immerse you in sound, turning every drive into an auditory experience. And let's not forget the programmable safety key, an innovative feature that encourages responsible driving habits. The F-250 Super Duty XL stands on ruggedly designed painted steel wheels, ready to roll out with a spare tire kit included, ensuring that you're prepared for the unexpected. This truck doesn't just meet expectations; it surpasses them, as evidenced by the accolades it has received. Honored with awards from Edmunds, J.D. Power and Associates, and Kelley Blue Book, this truck has been recognized for its top-notch quality, performance, and brand image. Imagine the possibilities as you take the helm of this Ford F-250 Super Duty XL. It's more than a vehicle; it's a testament to Ford's commitment to excellence. This truck isn't just a purchase; it's an investment in power, capability, and peace of mind. We invite you to click on the Warranty Tab to explore the warranty details, further ensuring that your investment is protected. Don't miss your chance to own this paragon of performance and reliability. The 2017 Ford F-250 Super Duty XL is waiting to start its next chapter with you at the wheel. Come in, take the keys, and drive away with not just a truck, but a partner that's built Ford tough.

Installed Options

Interior

- Air filtration- Front air conditioning- Power outlet(s): 12V front- Power steering
- Steering wheel: tilt and telescopic- Clock Digital odometer
- External temperature display- Multi-function display- Powertrain hour meter
- Trip odometer- Front seat type: 40-20-40 split bench - Rear seat folding: folds up
- Rear seat type: 60-40 split bench

Exterior

- Pickup bed light- Tailgate: lift assist- Towing mirrors- Spare tire kit
- Spare wheel type: steel- Tire Pressure Monitoring System- Wheels: painted steel
- Solar-tinted glass

Prices do not include sales tax, registration fees and dealer conveyance fee of 799. If you have a trade-in your sales tax will be reduced based on the difference between the car you are purchasing and your trade-in. Final credit decisions are made by lenders. The advertised price is the price for this vehicle in its current condition. Any alterations, upgrades, installations, cosmetic work, or any other additions requested by the customer would incur an additional cost, to be added to the selling price of the vehicle. The price does not include sales tax, vehicle registration charges, cost of additional requests by the customer, finance charges, processing charges, or any other charges required by law. The dealer reserves the right to pass all vehicles through Connecticut State inspection prior to delivery. The dealer attempts to update this inventory on a regular basis, however, there can be a delay between the sale of a vehicle and the update of the dealer's online inventory. Advertised price does not include sales tax, vehicle registration charges, cost of additional requests by the customer, finance charges, processing charges, or any other charges required by law. Vehicles are sold cosmetically as is and equipped as is. Costs incurred by Sound Auto Wholesalers as a result of customer requests are not included in advertised prices. Customer must present a signed copy of this ad at the time of purchase. Online pricing excludes all prior offers, and may not be combined with any other offers, coupons, or discounts. Vehicle options and pricing are subject to change. Special price includes all dealer rebates and incentives. Finance promotions based on tier 1 credit approval after 20% down payment. All online prices expire at 12:01 PM today. Sound Auto Wholesalers will honor expired advertised prices up to 24 hours after expiration, provided the customer presents a signed, printed copy of the advertised price at the start of their visit. We make every effort to adequately represent the condition and features of all our inventory including vehicle information, pictures, pricing, and status but there may be inaccuracies. Sound Auto Wholesalers assumes no responsibility for inaccuracies in online information nor is it responsible for errors in any third-party advertisements. Please confirm any questions or concerns by contacting Sound Auto Wholesalers directly. EPA mileage estimates are based on model year EPA mileage ratings and are for comparison purposes only. Your actual

mileage will vary depending on how you drive and maintain your vehicle. Before purchasing this vehicle, it is solely the customer's responsibility to address any and all differences between the information on this website and the actual vehicle specifications and/or warranties offered prior to the sale of this vehicle. Vehicle data on this website is compiled from publicly available sources believed by the publisher to be reliable. Vehicle data is subject to change without notice. The publisher assumes no responsibility for errors and/or omissions in this data and its compilation, and makes no representations expressed or implied to any actual or prospective purchaser of the vehicle as to the condition of the vehicle, vehicle specifications, ownership, vehicle history, equipment/accessories, price, or warranties. We are A-Plus Rated by The Better Business Bureau.

Sound Auto Wholesalers

Sound Auto Wholesalers

View this car on our website at soundautowholesalers.com/7289074

Website: soundautowholesalers.com

Phone: (203) 466-2622

Map: [139 W Main St, Branford, CT 06405](#)

