

# 2024 Jeep Wrangler Rubicon 392 4X4 HARD TOP,DUPONT KEVLAR,BUMPERS

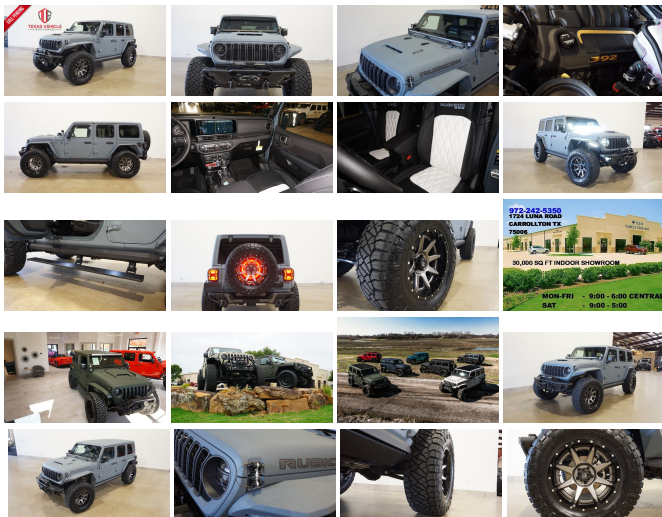
View this car on our website at [tveauto.com/7288682/ebrochure](https://tveauto.com/7288682/ebrochure)



Our Price **\$145,900**

## Specifications:

<b>Year:</b>	2024
<b>VIN:</b>	1C4RJXSJ1RW132889
<b>Make:</b>	Jeep
<b>Stock:</b>	132889
<b>Model/Trim:</b>	Wrangler Rubicon 392 4X4 HARD TOP,DUPONT KEVLAR,BUMPERS
<b>Condition:</b>	Pre-Owned
<b>Body:</b>	SUV
<b>Exterior:</b>	Blue
<b>Engine:</b>	HEMI 6.4L V8 470hp 470ft. lbs.
<b>Interior:</b>	Black Leather
<b>Transmission:</b>	8-Speed Shiftable Automatic
<b>Mileage:</b>	85
<b>Drivetrain:</b>	4 Wheel Drive
<b>Economy:</b>	City 13 / Highway 16



NATION WIDE FINANCING

SUBMIT CREDIT APP [WWW.TVEAUTO.COM](https://www.tveauto.com)

OR CALL 972-242-5350

**"WINTER BLUE EDITION"**

CUSTOM BUILT **KEVLAR** 2024 JEEP  
WRANGLER JL UNLIMITED RUBICON 4X4  
WITH 27X PACKAGE

**UPGRADES INCLUDE:**

- \* WINTER BLUE KEVLAR COATING WITH ANTHRACITE ACCENTS
- \* 6.4L V8 SRT HEMI ENGINE
- \* 3 PIECE HARD TOP
- \* CUSTOM ALEA WHITE & BLACK LEATHER WITH WINTER BLUE STITCHING
- \* FACTORY REMOTE START
- \* REMOTE PROXIMITY KEYLESS ENTRY
- \* COLD WEATHER GROUP
- \* LED LIGHTING GROUP
- \* SAFETY GROUP
- \* ADVANCED SAFETY GROUP
- \* FORWARD FACING TRAIL CAM
- \* FACTORY 12.3 INCH TOUCH SCREEN NAVIGATION WITH HD AM/FM/SIRIUS STEREO & ALPINE PREMIUM AUDIO SYSTEM
- \* FACTORY BACK-UP CAMERA
- \* U-CONNECT
- \* SMITTYBILT APOLLO JL FRONT BUMPER WITH 2 MINI LED LIGHT BARS & LED FOGLIGHTS
- \* FRONT D-RINGS & ISOLATORS (ANTHRACITE)
- \* SMITTYBILT NEW GEN 3 "X20" 10,000 LB WATERPROOF AND WIRELESS CONTROL WINCH WITH SYNTHETIC ROPE
- \* FACTOR 55 PROLINK (BLACK)
- \* FACTORY LED HEADLIGHTS
- \* RUGGED RIDGE BLACK HEADLIGHT GUARDS
- \* FACTORY HOOD WITH AIR INTAKE SCOOP
- \* DRAKE OFF ROAD HOOD LATCHES
- \* ROAD ARMOR STEALTH JL FENDER FI ARFS

- \* DV8 OFF ROAD FRONT & REAR INNER FENDERS
- \* TERAFLX FALCON SERIES 3 SHOCKS & RESERVOIRS
- \* TERAFLX FALCON STABILIZER KIT
- \* MOPAR AUXILIARY SWITCH BANK KIT
- \* 50" LED LIGHT BAR AND 4 RIGID INDUSTRIES DUALY D2 LED PILLAR LIGHTS
- \* AMP RESEARCH POWERSTEP XL RUNNING BOARDS WITH LED LIGHT KIT
- \* EVOLUTION 2 BLACK LED TAIL LIGHTS
- \* RUGGED RIDGE BLACK TAIL LIGHT GUARDS
- \* RUGGED RIDGE SPARTACUS HD HINGE KIT
- \* RUGGED RIDGE LED THIRD BRAKE LIGHT RING
- \* SMITTYBILT APOLLO JL REAR BUMPER WITH REAR PARK DISTANCE SENSORS
- \* REAR D-RINGS & ISOLATORS (ANTHRACITE)
- \* ALL WEATHER FLOOR MATS
- \* TAZER JL PROGRAMMER WITH SPEEDOMETER CALIBRATION
- \* 20" FUEL "RAMPAGE" 2-PIECE WHEELS
- \* BRAND NEW NITTO RIDGE GRAPPLER 37X13.50R/20 TIRES

WE BUILD EVERY JEEP WITH PRIDE! DO NOT HESITATE TO CALL US WITH THIS JEEP BUILD. WE CAN MAKE CHANGES TO THIS JEEP BUILD OR CUSTOM BUILD ANY JEEP TO YOUR PREFERENCE. GIVE US A CALL @ 972-242-5350 OR STOP BY FOR A TEST DRIVE. 1724 LUNA RD IN CARROLLTON - 2 MILES NORTH OF 635.

2024 Jeep Wrangler Rubicon 392 4X4 HARD TOP,DUPONT KEVLAR,BUMPERS  
Texas Vehicle Exchange - 972-242-5350 - View this car on our website at [veauto.com/7288682/ebrochure](http://veauto.com/7288682/ebrochure)

### Vehicle History Report : as Of 04/27/2024



#### Snapshot

### 2024 JEEP WRANGLER RUBICON 392



No accidents or damage reported to CARFAX



Well maintained vehicle



CARFAX 1-Owner vehicle



Corporate vehicle



Last owned in Texas



85 Last reported odometer reading



**FREE CARFAX Report**

See the full CARFAX Report for additional information

\*carfax Snapshot is a reflection of available information on the date the report was pulled. carfax is constantly being updated with new information and is subject to change at any time.

### Our Location :



2024 Jeep Wrangler Rubicon 392 4X4 HARD TOP,DUPONT KEVLAR,BUMPERS  
Texas Vehicle Exchange - 972-242-5350 - View this car on our website at [veauto.com/7288682/ebrochure](http://veauto.com/7288682/ebrochure)

## Installed Options

### Interior

- Air filtration- Front air conditioning: automatic climate control- Rear vents: second row
- Floor mat material: carpet- Floor mats: front- Heated steering wheel
- Parking brake trim: leather- Shift knob trim: leather- Adaptive cruise control
- Adaptive stop and go cruise control: semi-automatic- Ambient lighting- Cargo area light
- Footwell lights- Power outlet(s): 115V rear- Power steering: variable/speed-proportional
- Push-button start- Rearview mirror: auto-dimming- Remote engine start
- Steering wheel: tilt and telescopic- Tool kit
- Universal remote transmitter: Homelink - garage door opener - Clock- Compass
- Customizable instrument cluster- Digital odometer- External temperature display
- Instrument cluster screen size: 7 in.- Multi-function display- Trip odometer
- Driver seat: heated- Driver seat power adjustments: 12- Front seat type: bucket
- Passenger seat: heated- Passenger seat power adjustments: 12- Rear seat folding: split
- Rear seat type: 60-40 split bench - Upholstery: leather-trimmed

### Exterior

- Hood scoop- Running boards- Daytime running lights: LED
- Exterior entry lights: approach lamps- Front fog lights: LED- Taillights: LED
- Side mirrors: heated- Removable roof: hard top- Spare tire size: full-size matching
- Spare wheel type: aluminum- Tire Pressure Monitoring System
- Wheels: painted aluminum alloy- Front wipers: variable intermittent
- Laminated glass: acoustic- Liftgate window: manual flip-up
- Power windows: safety reverse- Rear wiper: intermittent- Solar-tinted glass: front
- Tinted glass: windshield- Window defogger: rear

## Option Packages

### Factory Installed Packages

---

MOPAR All-Weather Floor Mats	\$170
------------------------------	-------

---

Quick Order Package 27X
Includes vehicle with standard equipment, 6.4L V8 HEMI engine, and 8-speed automatic transmission.

---

Option Packages Total	\$170
-----------------------	-------

Texas Vehicle Exchange

[tveauto.com](http://tveauto.com)

972-242-5350

1724 Luna Road

Carrollton, TX 75006

© 2024 AutoRevo - All rights reserved. - Powered by AutoRevo