

2013 Nissan Altima 3.5 SL V6 Local 1 Owner Leather Moonroof New Transmission

View this car on our website at caseattle.com/7288498/ebrochure

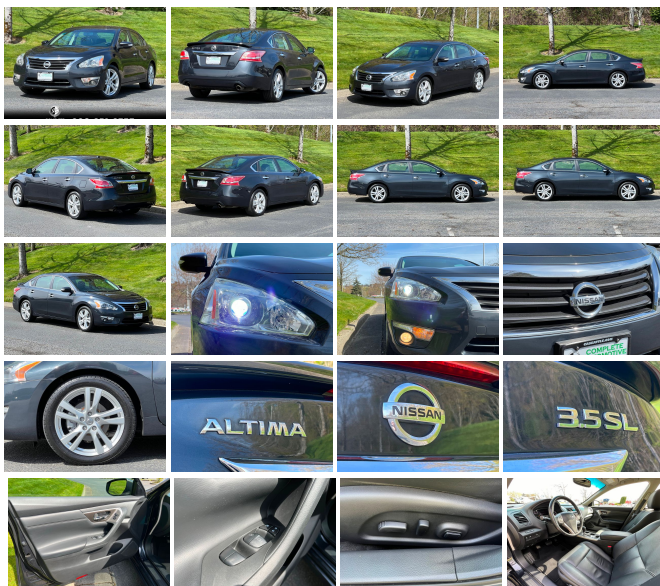


Our Price **\$10,500**

MSRP **\$31,930**

Specifications:

Year:	2013
VIN:	1N4BL3AP1DN485096
Make:	Nissan
Stock:	11867
Model/Trim:	Altima 3.5 SL V6 Local 1 Owner Leather Moonroof New Transmission
Condition:	Pre-Owned
Body:	Sedan
Exterior:	[RBD] Storm Blue
Engine:	3.5L 24V DOHC V6
Interior:	Charcoal Leather
Transmission:	CVT Automatic
Mileage:	98,660
Drivetrain:	Front Wheel Drive
Economy:	City 22 / Highway 31



BRAND NEW NISSAN OEM TRANSMISSION WITH 12MONTH/12,000 MILE WARRANTY! LOCAL ONE OWNER WITH EXCELLENT HISTORY! RARE 3.5 SL MODEL! SAFETY! RELIABILITY! QUALITY! EXCELLENT VALUE! AND 31 MILES PER GALLON! Stunning color combination of Storm blue metallic (appears gray-black in certain light) with charcoal black leather interior. 270HP 3.5L 24V DOHC V6 engine, CVT automatic transmission, front wheel drive. Local one owner with full history, non smoker, over 24 service records on the Carfax. Sold new at Puyallup Nissan on 12/20/2012. (Carfax reports 'minor to moderate' damage to the right rear on 09/30/2016, from a low-speed, parking lot type incident from reversing, that resulted in damage to the rear bumper, tail lamp, and trunk-lid fascia panel. An insurance claim was filed, and the damage was repaired to factory specifications at a certified collision center. There was never any frame or structural damage, and of course the title is clean). Dual sport bucket heated leather seats with driver's 8-way power adjustment, and lumbar, tilt/telescopic heated leather wrapped multi-function steering wheel, dual zone automatic climate control, power tilt/slide sunroof, BOSE premium audio system, AM/FM/HD stereo, Sirius XM satellite radio, Bluetooth streaming audio, Bluetooth phone connectivity, backup camera, mood lighting, push button ignition, rear spoiler, intermittent wipers, keyless entry, remote start, smart-key system, alarm system, advanced drive-assist display (located in instrument cluster), (ABS) anti-lock braking system, (EBA) electronic brake assist, (TCS) traction control system, (VDC) vehicle dynamic control, dual front advanced

control system, (VDC) vehicle dynamics control, dual front advanced airbags, front side airbags, front and rear side curtain airbags, (TPMS) tire pressure monitoring system, automatic xenon HID headlamps, fog lamps, LED tail lamps, 18" dual 5-spoke alloy wheels with all season tires in LIKE NEW condition! Just had a buyer's inspection performed and major service including BRAND NEW NISSAN OEM TRANSMISSION including a 12 month, 12,000 mile warranty on parts and labor for the repair. This repair is over \$9,000 at the Nissan dealer and is a very common failure point on many Nissan models due to a design flaw in the original parts. Other repairs performed include; oil and filter change, new front brake pads and rotors, tire rotation, four wheel alignment, new engine air filter, new cabin air filter, new wiper blades. LOOKS AND DRIVES LIKE IT HAS 50,000 MILES. EXCELLENT CONDITION! Compare the miles, condition, options, recent repairs, and price to other cars and other Altima's available in this price range. You will easily be able to justify the value of this one. Sold new for over \$31,930 in 2013, which equates to over \$42,534 in today's money. Why buy new? Retail value is \$11,288. Why pay retail? ON SALE FOR BELOW RETAIL! Save thousands and buy quality and value!

Since 1983, Complete Automotive has been the premier pre-owned luxury car dealership in the greater Seattle area.

Voted Best Service Department by Seattle Magazine, "we service what we sell".

We specialize in service and sales of Audi, BMW, Jaguar, Land Rover, Mercedes-Benz, MINI, Porsche, and classic automobiles.

In addition, we accept all trades. We also have various financing options available to our customers.

Our cars are shown by appointment only. The best and quickest way to reach us is to call direct at 206-322-5247. We will cater to your schedule.

2013 Nissan Altima 3.5 SL V6 Local 1 Owner Leather Moonroof New Transmission

Complete Automotive - 206-322-5247 - View this car on our website at caseattle.com/7288498/ebrochure

Vehicle History Report : as Of 05/15/2024



Snapshot

2013 NISSAN ALTIMA 3.5 SL



Minor to moderate damage



MINOR MODERATE SEVERE

24 Service history records



CARFAX 1-Owner vehicle



Personal vehicle



98,127 Last reported odometer reading



FREE CARFAX Report

See the full CARFAX Report for additional information

*carfax Snapshot is a reflection of available information on the date the report was pulled. carfax is constantly being updated with new information and is subject to change at any time.

Our Location :



2013 Nissan Altima 3.5 SL V6 Local 1 Owner Leather Moonroof New Transmission
Complete Automotive - 206-322-5247 - View this car on our website at caseattle.com/7288498/ebrochure

Installed Options

Interior

- Air filtration- Front air conditioning: automatic climate control
- Front air conditioning zones: dual- Rear vents: second row
- Armrests: rear center folding with storage- Heated steering wheel
- Interior accents: metallic/woodgrain- Shift knob trim: leather- Steering wheel trim: leather
- Ambient lighting- Cargo area light- Cruise control
- Multi-function remote: proximity entry system- Power outlet(s): two 12V front
- Power steering- Push-button start- Rearview mirror: auto-dimming- Remote engine start
- Steering wheel: tilt and telescopic
- Universal remote transmitter: Homelink - garage door opener - Clock- Compass
- External temperature display- Multi-function display- Trip odometer- Driver seat: heated
- Driver seat power adjustments: 8- Front seat type: bucket- Passenger seat: heated
- Rear seat folding: split- Rear seat type: 60-40 split bench - Upholstery: leather-trimmed

Exterior

- Door handle color: chrome- Exhaust: dual tip- Front bumper color: body-color
- Mirror color: body-color- Front fog lights- Taillights: LED- Side mirrors: heated
- Spare wheel type: steel- Tire Pressure Monitoring System- Wheels: aluminum alloy
- Front wipers: variable intermittent- Window defogger: rear

Option Packages

Factory Installed Packages

Rear Spoiler	\$395
Splash Guards Includes front and rear splash guards.	\$145
Floor Mats (5-pc Set) Includes a set of four floor mats and cargo area mat.	\$185
Option Packages Total	\$725

The price for this vehicle as equipped does not include charges such as: License, Title, Registration Fees, State or Local Taxes, Finance Charges, Credit Investigation, Optional Credit Insurance, Physical Damage of Liability Insurance, or Delivery Fees. A documentary service fee of up to \$200 may be charged or added to the cost of the vehicle. Complete Automotive makes no representations, expressed or implied, to any actual or prospective purchaser or owner of this vehicle as to the existence, ownership, accuracy, description or condition of this vehicles listed equipment, accessories, price or any warranties. Any and all differences must be addressed prior to the sale of this vehicle.

Complete Automotive

caseattle.com

206-322-5247

1107 Elliott Ave W

Seattle, Washington 98119

© 2024 AutoRevo - All rights reserved. - [Powered by AutoRevo](#)