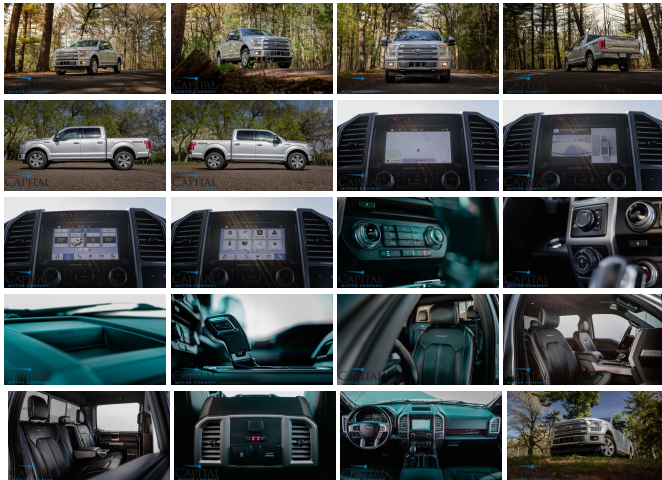


## 2017 Ford F-150 Platinum SuperCrew 4x4 w/Adaptive Cruise, 360° Cam, Heated/Cooled Seats & Tow Pkg

View this car on our website at [capitalmotorcompany.com/7287154/ebrochure](http://capitalmotorcompany.com/7287154/ebrochure)



Your Price **\$27,950**

### Specifications:

Year:	2017
VIN:	1FTEW1EG5HFB27173
Make:	Ford
Stock:	6090
Model/Trim:	F-150 Platinum SuperCrew 4x4 w/Adaptive Cruise, 360° Cam, Heated/Cooled Seats & Tow Pkg
Condition:	Pre-Owned
Body:	Pickup Truck
Exterior:	[UX] Ingot Silver
Engine:	3.5-Liter EcoBoost V6
Interior:	Black
Transmission:	10-Speed Automatic with Tow/Haul Mode
Mileage:	104,955
Drivetrain:	4 Wheel Drive
Economy:	City 17 / Highway 23

We have for sale an exceptional 2017 Ford F-150 Platinum SuperCrew 4x4 Short Bed Truck that has a lot to offer! This is a phenomenal truck that is a treat to drive and looks amazing. It has gorgeous Ingot Silver Metallic paint with polished 20-Inch Wheels and a fully loaded Black Leather interior that will put most luxury cars to shame! We know that if you like how it looks in the photos, you will fall in love with it once you get to drive it!

- 3.5-Liter EcoBoost Twin-Turbo V6 Engine and the 10-Speed Automatic Transmission with Tow/Haul Modes make this truck a very enjoyable truck to drive with power and towing capacity!
- 4-Wheel Drive with Driver Selectable Dial
  - 2-Wheel Drive, Automatic-4WD, Full-Time 4WD and 4WD Low Range
- 4-Door SuperCrew Crew Cabin offers 4 full-size doors which provides all the passengers with plenty of leg and head room!
- 5.5-Foot Cargo Box
- MAX Trailer Tow Package with 12,200lb Tow Capacity
  - Pro-Trailer Backup Assist
  - Integrated Trailer Brake Controller
  - Extended Range 36 Gallon Fuel Tank

- Smart Trailer Tow Connector
- 3.55 Electronic Locking Rear Differential
- Technology Package
  - Adaptive Cruise Control with Automatic Acceleration and Braking
  - 360° Surround View Camera System
  - Lane-Keeping System
  - Dynamic Hitch Assist
- Platinum Package
  - Touchscreen Navigation System
  - Power Deployable Running Boards
  - Keyless Entry and Push-Button Start
  - Quad-Beam LED Head Lights
  - Remote Vehicle Start
  - Dual-Zone Automatic Climate Control
  - Platinum Leather Upholstery
- Sony Premium Surround Sound Audio
  - Apple CarPlay Integration
  - Android Auto Integration
  - Bluetooth Streaming Audio Connection
  - SiriusXM Satellite Radio Ready
  - Aux / USB Audio Inputs
  - AM / FM / CD Audio
- Heated / Cooled Front Seats
- Heated Rear Seats
- Power Adjustable Front Seats with Driver's Seat Memory
- Split-Folding Rear Seats

To make sure this F-150 Platinum SuperCrew 4x4 runs and drives perfectly, it has been fully inspected. The inspection process is very thorough and all of the vehicle's systems, fluids, brakes, tires, suspension, engine and drivetrain are gone through so there are no surprises! If you have any questions or are considering trading in your current vehicle, please call anytime at (715) 833-2020.

## Our Location :



2017 Ford F-150 Platinum SuperCrew 4x4 w/Adaptive Cruise, 360° Cam, Heated/Cooled Seats & Tow Pkg  
Capital Motor Company - (715) 833-2020 - View this car on our website at [capitalmotorcompany.com/7287154/ebookchure](https://capitalmotorcompany.com/7287154/ebookchure)

## Installed Options

### Interior

- Front air conditioning: automatic climate control- Front air conditioning zones: dual
- Rear vents: second row- Armrests: rear center folding with storage
- Center console trim: alloy- Dash trim: leather- Door trim: leather
- Floor mat material: carpet- Floor mats: front- Heated steering wheel
- Interior accents: chrome- Shift knob trim: leather- Steering wheel trim: leather
- Adjustable pedals: power- Ambient lighting- Capless fuel filler system- Cruise control
- Keypad entry- Memorized settings: 3 driver- Power outlet(s): 115V- Power steering
- Push-button start- Rearview mirror: auto-dimming- Remote engine start
- Steering wheel: power tilt and telescopic
- Universal remote transmitter: garage door opener- Clock- Compass
- Customizable instrument cluster- Digital odometer- External temperature display
- Instrument cluster screen size: 8 in.- Multi-function display- Trip odometer
- Driver seat: cooled- Driver seat power adjustments: 10- Front seat type: bucket
- Passenger seat: cooled- Passenger seat power adjustments: 10- Rear seat: heated
- Rear seat folding: folds up- Rear seat type: 60-40 split bench - Upholstery: leather

### Exterior

- Door handle color: chrome- Front bumper color: chrome- Mirror color: chrome
- Pickup bed light: LED- Running boards: power retractable- Tailgate: power locking
- Daytime running lights- Exterior entry lights: approach lamps- Front fog lights
- Taillights: LED- Side mirror adjustments: power- Side mirrors: driver side auto-dimming
- Spare wheel type: steel- Tire Pressure Monitoring System
- Wheels: polished aluminum alloy- Pickup sliding rear window: power- Power windows
- Rear privacy glass- Solar-tinted glass: rear- Window defogger: rear

## Option Packages

### Factory Installed Packages

#### 5.5 Ft. Short Bed

#### Extended Range 36 Gallon Fuel Tank

\$445

#### Spray-In Bed Liner

\$495

#### Tailgate Step

Includes tailgate step with tailgate lift assist.

\$375

#### Wheel Well Liner

\$180

#### Equipment Group 701A

Includes vehicle with standard equipment, adaptive cruise control, collision warning, brake support, tailgate step with tailgate lift assist, and Technology Package with lane-keeping system, 360 degree camera with split-view display, and Dynamic Hitch Assist.

\$2,540

#### Max Trailer Tow Package

Includes 3.55 electronic-locking rear axle, 4-pin and 7-pin wiring harness, auxiliary transmission oil cooler, Class IV trailer hitch receiver, Pro Trailer Backup Assist with tailgate LED, Smart Trailer Tow Connector, integrated trailer brake controller, upgraded front stabilizer bar, upgraded rear bumper, 36 gallon fuel tank, and max towing capability of 12,200 lbs.

\$1,295

#### Technology Package

Includes lane-keeping system, 360 degree camera with split-view display, and Dynamic Hitch Assist.

\$990

#### 3.55 Electronic Locking Axle Ratio

\$470

#### Engine Block Heater

\$90

#### Option Packages Total

\$6,880

Tax, title, license and dealer fees extra. Prices are subject to change without notice. All incentives include special APR and are subject to change without notice and are available to qualified credit according to management or lending institution guidelines. It is the customer's responsibility to verify options, features and details in description for accuracy.

