

2020 Ford F-250 Super Duty XLT 4x4

View this car on our website at texasmotorcars.com/7287146/ebrochure



Our Price **\$32,977**

Specifications:

Year:	2020
VIN:	1FT7W2BT3LED84377
Make:	Ford
Stock:	D84377
Model/Trim:	F-250 Super Duty XLT 4x4
Condition:	Pre-Owned
Body:	Pickup Truck
Exterior:	[JS] Iconic Silver
Engine:	Power Stroke 6.7L Biodiesel Turbo V8 475hp 1050ft. lbs.
Interior:	Medium Earth Gray
Transmission:	10-Speed Shifttable Automatic
Mileage:	153,979
Drivetrain:	4 Wheel Drive

2020 Ford F-250 Super Duty XLT 4x4

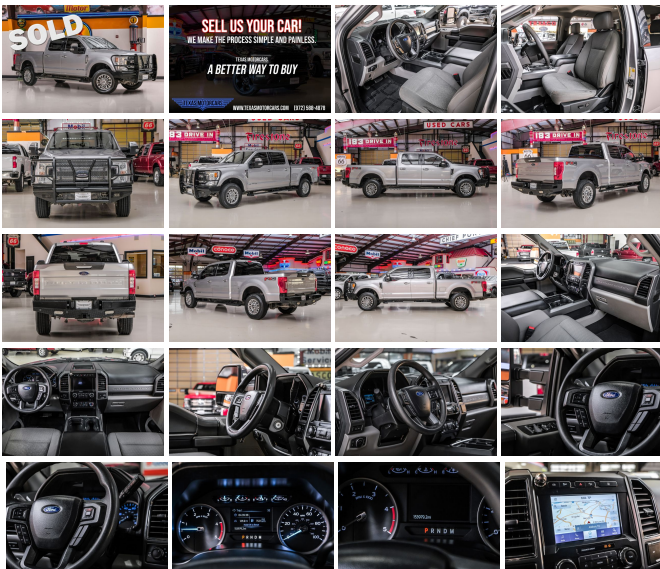
Immerse yourself in the commanding presence of the 2020 Ford F-250 Super Duty XLT 4x4, a powerhouse draped in a sleek silver exterior that exudes confidence and capability. This heavy-duty champion, with its robust Power Stroke 6.7L Biodiesel Turbo V8 engine, delivers a staggering 475 horsepower and an earth-moving 1050 ft-lbs of torque, ensuring that no task is too daunting.

This Super Duty is not just about brawn; it's also about brains. The Voice-Activated Navigation System with a 5-year pre-paid subscription to SiriusXM Traffic and Travel Link ensures you're always on the right path, while the Wi-Fi hotspot keeps you connected no matter where your adventures take you.

For those who demand practicality, the Tough Bed Spray-In Bedliner, complete with tailgate guard and tie-down hooks, offers unmatched durability for your cargo. The 6-inch Chrome Angular Extended Running Boards add a touch of elegance and functionality, making entry and exit a breeze.

When the road less traveled calls, the FX4 Off-Road Package is your trusted companion. Equipped with hill descent control, skid plates, off-road tuned shocks, and a unique decal, this truck is ready to take on any terrain. The LT275/70R18E OWL All-Terrain Tires, including a spare, ensure you're prepared for any challenge, while the 3.31 Electronic Locking Axle Ratio provides the traction you need when conditions get tough.

The convenience of Remote Vehicle Start means your F-250 is ready to go when you are, and the Engine Block Heater ensures optimal



go when you are, and the Engine Block Heater ensures optimal performance in colder climates. Upfitter Switches offer customization potential for additional accessories or equipment.

Seize the opportunity to own a vehicle that blends raw strength, advanced technology, and uncompromising safety. The 2020 Ford F-250 Super Duty XLT 4x4 is not just a truck; it's a promise of performance, a beacon of reliability, and a symbol of the drive to conquer.

This vehicle has been reduced at below wholesale prices. No outside financing will be accepted!

READY for work and play! Give us a call today!

Can't make it in? We offer shipping all over the United States. Ask your salesperson for shipping quotes.

Financing is available with competitive rates! Get pre-approved in no time by filling out a credit application on the finance section of our website! We also offer industry leading, highly rated warranty options so you can select one perfect for your specific vehicle needs.

All vehicles are priced for QUICK SALE. Call us today to see how easy it is to buy a vehicle at Texas Motorcars.

Texas Motorcars in Addison is a family owned and operated business. We are committed to delivering the best possible service!

Se habla Español!

Texas Motorcars "A Better Way To Buy!"

2020 Ford F-250 Super Duty XLT 4x4

Texas Motorcars - 972-521-7788 - View this car on our website at [texasmotorcars.com/7287146/ebrochure](https://www.texasmotorcars.com/7287146/ebrochure)

Vehicle History Report : as Of 04/29/2024



Snapshot

2020 FORD F-250 SUPER DUTY XLT



No accidents or damage reported to CARFAX



2 Service history records



CARFAX 1-Owner vehicle



Commercial vehicle



Last owned in Texas



153,979 Last reported odometer reading

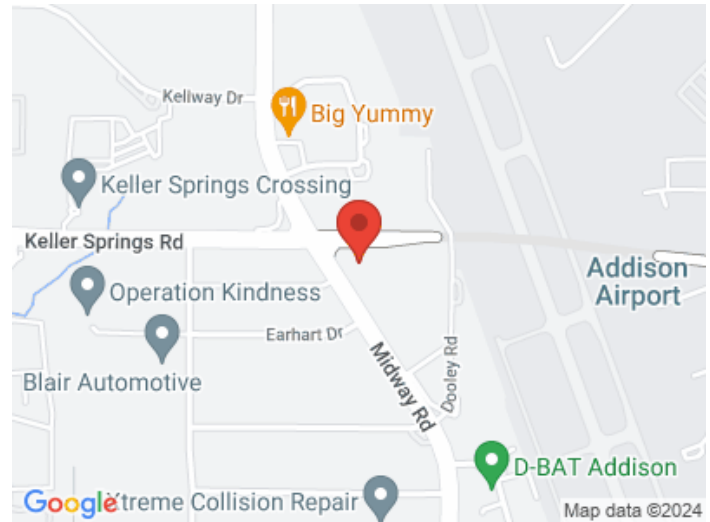


FREE CARFAX Report

See the full CARFAX Report for additional information

*carfax Snapshot is a reflection of available information on the date the report was pulled. carfax is constantly being updated with new information and is subject to change at any time.

Our Location :



2020 Ford F-250 Super Duty XLT 4x4

Texas Motorcars - 972-521-7788 - View this car on our website at texasmotorcars.com/7287146/ebrochure

Installed Options

Interior

- Air filtration- Front air conditioning- Floor mat material: carpet- Floor mats: front
- Cruise control- Multi-function remote: keyless entry- Power outlet(s): 115V front
- Power steering- Steering wheel: tilt and telescopic- Clock- Compass- Digital odometer
- External temperature display- Multi-function display- Powertrain hour meter
- Trip odometer- Front seat type: 40-20-40 split bench - Rear seat folding: folds up
- Rear seat type: 60-40 split bench - Upholstery: cloth

Exterior

- Front bumper color: chrome- Pickup bed light- Tailgate: lift assist- Side mirrors: heated
- Towing mirrors- Spare wheel type: steel- Tire Pressure Monitoring System
- Wheels: painted aluminum alloy- Front wipers: variable intermittent
- Power windows: safety reverse- Rear privacy glass- Solar-tinted glass: front

Option Packages

Factory Installed Packages

["Voice-Activated Navigation System", "Includes voice activated HD navigation system with SiriusXM Traffic and Travel Link with 5 year pre-paid subscription."]

\$570

["6 In. Chrome Angular Extended Running Boards"]

\$740

["LT275/70R18E OWL All-Terrain Tires", "Includes all-terrain spare tire."]

\$290

["Tough Bed Spray-In Bedliner", "Includes tailgate guard, black box bed tie down hooks, and black bed attachment bolts."]

\$595

["Remote Vehicle Start"]

\$250

["FX4 Off-Road Package", "Includes hill descent control, transfer case and fuel tank skid plates, off-road tuned shocks, and unique FX4 Off Road box decal."]

\$400

["3.31 Electronic Locking Axle Ratio"]

\$390

["Engine Block Heater"]

\$100

["Upfitter Switches", "Includes six (6) switches located in overhead console."]

\$165

Option Packages Total

\$3,500

Texas Motorcars

texasmotorcars.com

972-521-7788

16000 Midway Rd

Addison, Texas 75001

© 2024 AutoRevo - All rights reserved. - Powered by AutoRevo