

2017 Mercedes-Benz GLC 300 4MATIC All-Wheel Drive Luxury SUV w/Nav, Backup Cam, Heated Seats & Premium Audio

View this car on our website at capitalmotorcompany.com/7285920/ebrochure

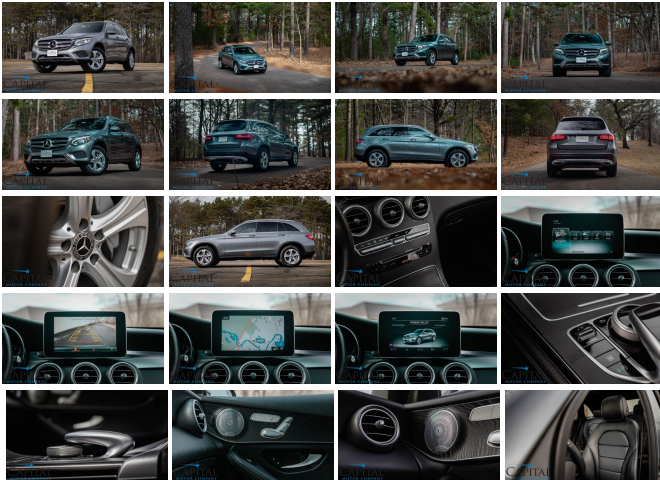


Your Price **\$21,950**

Retail Value ~~\$22,427~~

Specifications:

Year:	2017
VIN:	WDC0G4KB9HV005921
Make:	Mercedes-Benz
Stock:	6089
Model/Trim:	GLC 300 4MATIC All-Wheel Drive Luxury SUV w/Nav, Backup Cam, Heated Seats & Premium Audio
Condition:	Pre-Owned
Body:	SUV
Exterior:	[992] Selenite Grey Metallic
Engine:	2.0-Liter 4-Cylinder Turbo
Interior:	Black Leatherette
Transmission:	9-Speed Automatic
Mileage:	53,553
Drivetrain:	All Wheel Drive
Economy:	City 21 / Highway 28



We have for sale a stunning, low mileage 2017 Mercedes-Benz GLC300 4MATIC All-Wheel Drive Luxury SUV that is a pleasure to drive and has a lot to offer! This GLC has a beautiful Selenite Grey Metallic Paint with the 18-Inch 5-Spoke Alloy Wheels that give the car an incredible stance and an exceptional interior! As you can see from the photos, this GLC has been very well cared for. We know that if you like how it looks in the pictures you will fall in love when you come to drive it.

- 28MPG On The Highway from a potent 2.0-Liter 4-Cylinder Turbo Engine and smooth shifting 9-Speed Automatic with Sport Mode and Steering Wheel Paddle Shifters!
- 4MATIC All-Wheel Drive which is a phenomenal AWD system that provides secure handling on snow, ice, and wet conditions and crisp, responsive handling on dry pavement!
- Premium 2 Package
 - Navigation System

- Rear-View Camera
- Blind-Spot Assist
- Keyless Go Passive Entry
- Keyless Go Push-Button Start
- 115V AC Power Outlet
- Heated Steering Wheel
- Heated Front Seats
- Power Front Seats with Driver's Seat Memory
- LED Head Lights
- Burmester Surround Sound Audio
 - Built-In Music Storage Hard Drive
 - Bluetooth Streaming Audio Connection
 - SiriusXM Satellite Radio Ready
 - Aux Audio Input
- Dual-Zone Automatic Climate Controls
- Twin-Panel Panoramic Power Moonroof with Sun Shade
- Split-Folding Rear Seats

To make sure this Mercedes-Benz GLC300 4MATIC AWD runs and drives perfectly, it has been fully inspected and certified to be sold. The inspection process is very thorough and all of the vehicle's systems, fluids, brakes, tires, suspension, engine and drivetrain are gone through so there are no surprises! If you have any questions or are considering trading in your current vehicle, please call anytime at (715) 833-2020.

2017 Mercedes-Benz GLC 300 4MATIC All-Wheel Drive Luxury SUV w/Nav, Backup Cam, Heated Seats & Premium Audio
 Capital Motor Company - (715) 833-2020 - View this car on our website at capitalmotorcompany.com/7285920/ebrochure

Our Location :



2017 Mercedes-Benz GLC 300 4MATIC All-Wheel Drive Luxury SUV w/Nav, Backup Cam, Heated Seats & Premium Audio

Installed Options
Interior
<div><div><div>- Air filtration: active charcoal- Front air conditioning: automatic climate control</div><div>- Front air conditioning zones: dual- Rear vents: second row- Center console trim: wood</div><div>- Dash trim: wood- Door trim: wood- Floor mat material: carpet- Floor mats: front</div><div>- Interior accents: wood-tone- Steering wheel trim: leather- Cargo area light- Cruise control</div><div>- Memorized settings: 3 driver- Multi-function remote: keyless entry</div><div>- Power outlet(s): 12V cargo area- Power steering: variable/speed-proportional</div><div>- Push-button start- Rearview mirror: auto-dimming</div><div>- Steering wheel: power tilt and telescopic</div><div>- Universal remote transmitter: Homelink - garage door opener - Clock- Digital odometer</div><div>- External temperature display- Multi-function display- Trip odometer</div><div>- Driver seat power adjustments: 14- Front seat type: bucket - Rear seat folding: split</div><div>- Rear seat type: 40-20-40 split bench - Upholstery: leatherette</div></div></div>
Exterior
<div><div><div>- Exhaust: dual tip- Front bumper color: body-color- Grille color: black with chrome accents</div><div>- Mirror color: body-color- Daytime running lights: LED- Exterior entry lights: puddle lamps</div><div>- Taillights: LED- Side mirror adjustments: power- Side mirrors: driver side auto-dimming</div><div>- Roof rails: chrome- Run flat tires- Tire Pressure Monitoring System</div><div>- Wheels: aluminum alloy- Front wipers: rain sensing- Power windows- Rear privacy glass</div><div>- Rear wiper: intermittent- Window defogger: rear</div></div></div>

Option Packages
Factory Installed Packages
<div><div><div>Burmester Surround Sound System</div><div>Includes 14 premium speakers and 640-watt amplifier.</div><div>\$850</div></div></div>
<div><div><div>18 in. 5-Spoke Wheels</div><div></div><div></div></div></div>
<div><div><div>LED Headlamps and Taillamps</div><div></div><div>\$850</div></div></div>
<div><div><div>Panorama Sunroof</div><div></div><div>\$1,480</div></div></div>
<div><div><div>Selenite Grey Metallic Paint</div><div></div><div>\$720</div></div></div>
<div><div><div>Black Ash Wood Interior Trim</div><div>Includes Black Ash interior wood trim on the doors, front center console and shift gate.</div><div>\$160</div></div></div>
<div><div><div>Heated Front Seats</div><div></div><div>\$580</div></div></div>
<div><div><div>Heated Steering Wheel</div><div></div><div>\$250</div></div></div>
<div><div><div>Premium 2 Package</div><div>Includes blind spot assist, KEYLESS-GO, 115V power outlet, SiriusXM radio, SiriusXM traffic and weather, COMAND hard drive navigation with 8.4 in. screen, touchpad controller, three years of navigation map updates, voice control, illuminated front door sills, multicolor LED ambient lighting, cargo net, collapsible cargo crate, and cargo area fasteners.</div><div>\$3,600</div></div></div>
<div><div><div>Option Packages Total</div><div></div><div>\$8,490</div></div></div>

Tax, title, license and dealer fees extra. Prices are subject to change without notice. All incentives include special APR and are subject to change without notice and are available to qualified credit according to management or lending institution guidelines. It is the customer's responsibility to verify options, features and details in description for accuracy.