

2016 Ford F-150 XLT

View this car on our website at shepherdllm.com/7285361/ebrochure



Our Price **\$25,900**

Specifications:

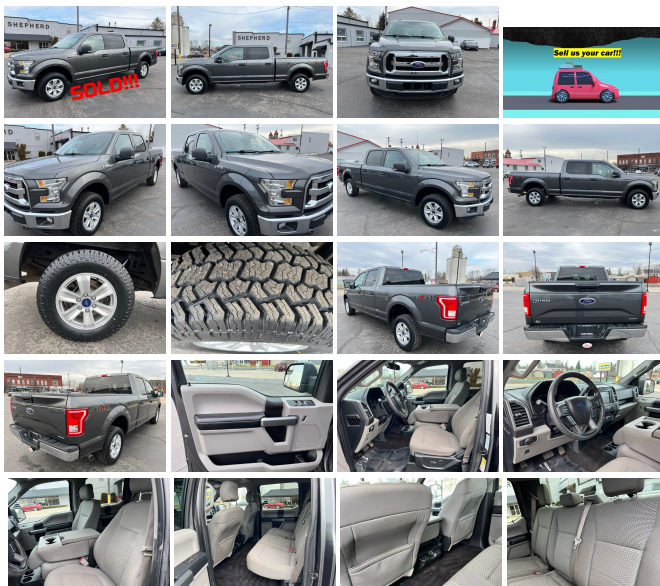
Year:	2016
VIN:	1FTFW1EF5GFD04881
Make:	Ford
Stock:	30610
Model/Trim:	F-150 XLT
Condition:	Pre-Owned
Body:	Pickup Truck
Exterior:	Gray
Engine:	5.0L Flex Fuel V8 385hp 387ft. lbs.
Interior:	Medium Earth Gray Cloth
Transmission:	6-Speed Shiftable Automatic
Mileage:	69,601
Drivetrain:	4 Wheel Drive
Economy:	City 11 / Highway 16

Clean CARFAX.

Gray 2016 Ford F-150 XLT 4WD 6-Speed Automatic Electronic 5.0L V8 FFV New Tires, New Brakes, 8-Way Power Driver's Seat, Extended Range 36 Gallon Fuel Tank, Power-Adjustable Pedals, Rear View Camera w/Dynamic Hitch Assist, Tailgate Step w/Tailgate Lift Assist.

Recent Arrival! Odometer is 53786 miles below market average!

Don't wait. Stop in today or call (586) 727-3885 to schedule a test drive. 77 years and going strong!!



2016 Ford F-150 XLT

Shepherd Sales & Service - (586) 727-3885 - View this car on our website at shepherdllm.com/7285361/ebrochure

Vehicle History Report : as Of 05/09/2024

CARFAX

Snapshot

2016 FORD F-150 XLT



No accidents or damage reported to CARFAX



12 Service history records



30 Detailed records available



69,601 Last reported odometer reading



FREE CARFAX Report

See the full CARFAX Report for additional information

*carfax Snapshot is a reflection of available information on the date the report was pulled. carfax is constantly being updated with new information and is subject to change at any time.

Our Location :



2016 Ford F-150 XLT

Shepherd Sales & Service - (586) 727-3885 - View this car on our website at shepherdsm.com/7285361/ebrochure

Installed Options

Interior

- Front air conditioning- Floor mat material: carpet- Floor mats: front
- Interior accents: chrome- Capless fuel filler system- Cruise control- Keypad entry
- Multi-function remote: keyless entry- Power outlet(s): 12V front- Power steering
- Steering wheel: tilt and telescopic- Clock- Compass- Digital odometer
- External temperature display- Front seat type: 40-20-40 split bench
- Rear seat folding: folds up- Rear seat type: 60-40 split bench - Upholstery: cloth

Exterior

- Front bumper color: chrome- Pickup bed light- Tailgate: power locking
- Daytime running lights- Front fog lights- Spare wheel type: steel
- Tire Pressure Monitoring System- Wheels: painted aluminum alloy
- Laminated glass: acoustic windshield- Power windows- Rear privacy glass
- Solar-tinted glass: rear

Shepherd Sales & Service

shepherdsm.com

(586) 727-3885

68200 Grand Trunk

Richmond, MI 48062

© 2024 AutoRevo - All rights reserved. - Powered by AutoRevo

