

2014 BMW 228i Coupe

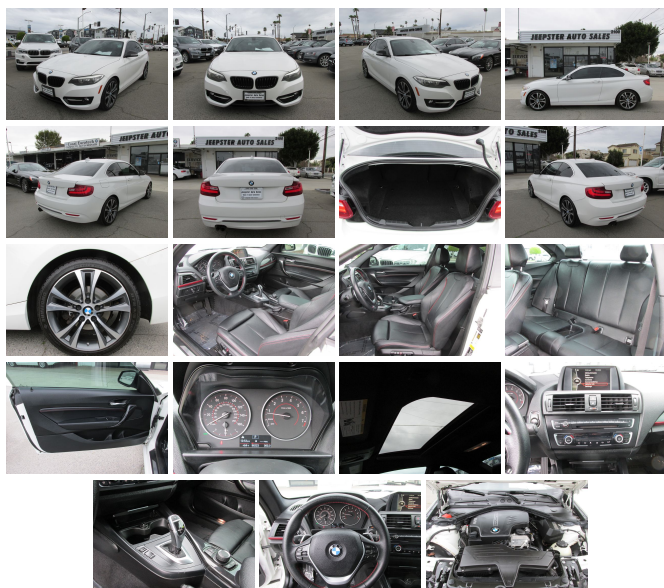
View this car on our website at jeepsterautosales.com/7285141/ebrochure



Our Price **\$12,990**

Specifications:

| | |
|----------------------|---------------------------------|
| Year: | 2014 |
| VIN: | WBA1F5C54EUV99385 |
| Make: | BMW |
| Stock: | 23409 |
| Model/Trim: | 228i Coupe |
| Condition: | Pre-Owned |
| Body: | Coupe |
| Exterior: | [300] Alpine White |
| Engine: | 2.0L Turbo I4 240hp 255ft. lbs. |
| Interior: | Black Leather |
| Transmission: | 8-Speed Shiftable Automatic |
| Mileage: | 95,550 |
| Drivetrain: | Rear Wheel Drive |
| Economy: | City 22 / Highway 34 |



Are you ready to slip behind the wheel of a true driver's delight? Introducing the exquisite 2014 BMW 228i Coupe – a harmonious blend of luxury, performance, and timeless style. With 95,550 miles on the odometer, this pristine white beauty has been meticulously cared for, and it's just waiting to take you on your next grand adventure.

As you approach this stunning coupe, the first thing you'll notice is its classic white exterior that exudes sophistication and purity. It's a color that doesn't just turn heads – it captivates the soul. The sleek lines and athletic stance of the 228i are unmistakably BMW, promising a driving experience that's both exhilarating and refined.

Slide into the driver's seat, and you'll be greeted by a sumptuous black leather interior that encapsulates luxury in every stitch. The seats envelop you in comfort, while the quality materials and craftsmanship remind you that you're in a vehicle that's a cut above the rest. This is a cockpit designed for those who appreciate the finer things in life, but demand the thrill of the drive.

At the heart of this automotive masterpiece is a potent 2.0L Turbo I4 engine that churns out an impressive 240 horsepower and 255 ft. lbs. of torque. It's an engine that sings a symphony of power with every press of the accelerator, delivering smooth, responsive performance that's as efficient as it is thrilling. Paired with an 8-Speed Shiftable Automatic transmission, the 228i offers a driving experience that's both dynamic and intuitive, with seamless gear changes that keep you in the sweet spot of the power band.

The manufacturer options and packages on this BMW 228i have been thoughtfully selected to enhance your driving pleasure. Every feature

has been designed to elevate your journey, from the convenience of the shiftable automatic transmission that lets you take control when the road calls for it, to the finely-tuned suspension that makes every curve a moment to savor.

This 2014 BMW 228i Coupe isn't just a car; it's a statement. It's for the discerning individual who wants to stand out from the crowd, for the enthusiast who craves a connection with the road, for the connoisseur who demands excellence in every aspect of their vehicle. It's a car that doesn't just meet expectations – it surpasses them.

Don't miss your chance to own a piece of the ultimate driving machine legacy. This BMW 228i is more than just a car; it's your ticket to a world of driving passion. Come and experience the allure of this white gem, and let it take you where you're meant to be – at the forefront of the road, wrapped in luxury, and in absolute control of your journey.

This is not just a car. It's a BMW. It's not just a drive. It's an experience. And it's waiting for you. Contact us today to schedule a test drive and prepare to be captivated by the 2014 BMW 228i Coupe – where every mile is a memory in the making.

2014 BMW 228i Coupe

Jeepster Auto Sales - (949) 646-1200 - View this car on our website at jeepsterautosales.com/7285141/ebrochure

Vehicle History Report : as Of 05/09/2024



Snapshot

2014 BMW 2 SERIES 228I



No accidents or damage reported to CARFAX



23 Service history records



3 Previous owners



Types of owners: Personal lease
Personal



Last owned in California



96,218 Last reported odometer reading

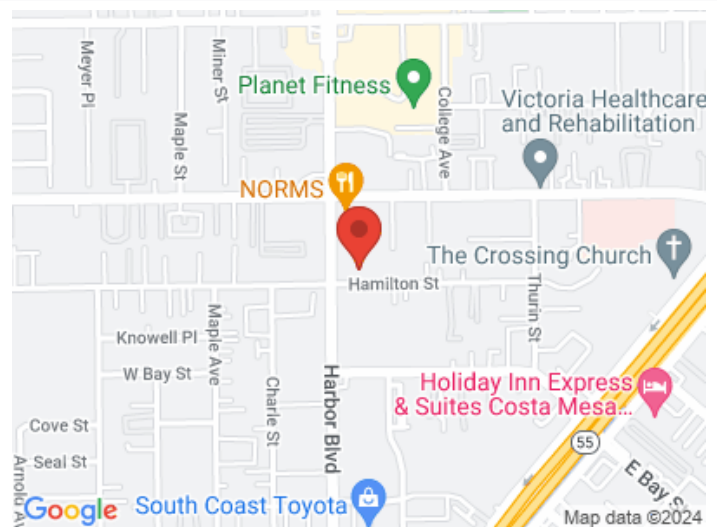


FREE CARFAX Report

See the full CARFAX Report for additional information

*carfax Snapshot is a reflection of available information on the date the report was pulled. carfax is constantly being updated with new information and is subject to change at any time.

Our Location :



| Installed Options | Option Packages |
|---|---|
| <div>Interior</div> <div><ul style="list-style-type: none">- Air filtration: active charcoal- Front air conditioning: automatic climate control- Front air conditioning zones: dual- Rear vents: second row- Cargo area floor mat- Floor mat material: carpet- Floor mats: front- Shift knob trim: alloy- Steering wheel trim: leather- Ambient lighting- Cargo area light- Cruise control- Multi-function remote: keyless entry- Power outlet(s): 12V front- Power steering- Push-button start- Steering wheel: tilt and telescopic- Clock- Digital odometer- External temperature display- Multi-function display- Trip odometer- Front seat type: bucket - Rear seat type: 60-40 split bench - Upholstery: leatherette</div> <div>Exterior</div> <div><ul style="list-style-type: none">- Exhaust: dual tip- Front bumper color: body-color- Mirror color: body-color- Rear spoiler: lip- Daytime running lights- Front fog lights- Taillights: adaptive- Side mirror adjustments: power- Side mirrors: integrated turn signals- Run flat tires- Tire Pressure Monitoring System- Wheels: aluminum alloy- Front wipers: rain sensing- Heated windshield washer jets- Power windows- Window defogger: rear</div> | <div>Factory Installed Packages</div> <div><div>18 in. Light Alloy Wheels</div><div>Includes all season tires.</div></div> <div><div>Moonroof</div><div>Includes one-touch power tilt/slide glass moonroof with remote operation and sliding interior sunshade.</div><div>\$1,050</div></div> <div><div>Premium Package</div><div>Includes universal garage door opener, comfort access keyless entry, moonroof, auto-dimming interior and exterior mirrors, auto-dimming rearview mirror, power front seats with driver memory, lumbar support, ambiance lighting, satellite radio with one year subscription, and Dakota leather interior.</div><div>\$4,050</div></div> <div><div>Sport Line</div><div>Includes 18 in. light alloy wheels, door mirror caps in black, sport seats, high gloss black trim or brushed aluminum trim or fineline wood trim, highlight finishers in coral red matte or oxide silver matte or black high gloss, M sport suspension, anthracite headliner, and leatherette or Dakota leather interior.</div><div>\$2,300</div></div> <div><div>Option Packages Total</div><div>\$7,400</div></div> |

Price excludes government fees and taxes, any finance charges, any dealer document preparation charge and any emission testing charge. Prices advertised are based upon a payment of cash or cashiers check or finance on approved credit. We are not responsible for any misprint or mistake made by the publisher regarding price, color or equipment.