

2015 Chevrolet Silverado 2500HD Diesel 4x4 LT

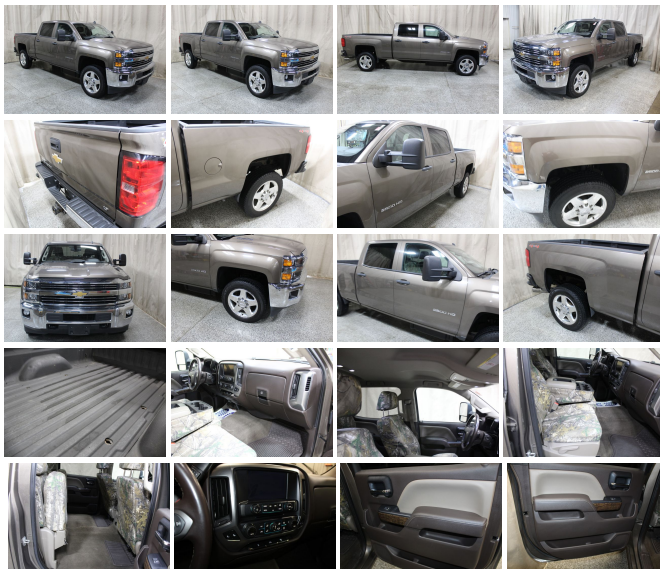
View this car on our website at autolandoutlets.com/7284520/ebrochure



Our Price **\$35,746**

Specifications:

Year:	2015
VIN:	1GC1KVE87FF159808
Make:	Chevrolet
Stock:	11696
Model/Trim:	Silverado 2500HD Diesel 4x4 LT
Condition:	Pre-Owned
Body:	Pickup Truck
Exterior:	[GWX] Brownstone Metallic
Engine:	Duramax 6.6L Diesel Turbo V8 397hp 765ft. lbs.
Interior:	Brown Cloth
Transmission:	Allison 1000 6-Speed Shifttable Automatic
Mileage:	142,532
Drivetrain:	4 Wheel Drive



Step into the realm of power and prestige with the awe-inspiring 2015 Chevrolet Silverado 2500HD Diesel 4x4 LT, a true testament to American engineering and resilience. Coated in a sophisticated brown hue, this full-size pickup is not just a vehicle; it's a statement of strength and capability.

As you approach this majestic beast, the exterior's rich color reflects a sense of uniqueness

in a sea of monochrome trucks. It's a color that speaks to the Silverado's reliability and readiness to tackle any job, any adventure, with grace and style.

Slide into the spacious cabin and you'll be greeted by a harmonious brown cloth interior that exudes comfort and durability. The seats invite you to sink into them, offering a supportive embrace for both short jaunts and long hauls. The interior isn't just about comfort, though; it's a practical and thoughtfully designed command center for all your driving needs.

Now, let's talk about what truly sets this Silverado apart: the heart-pounding Duramax 6.6L Diesel Turbo V8 engine. With an earth-shaking 397 horsepower and an astounding 765 foot-pounds of torque, this truck is ready to conquer any challenge. Whether you're towing heavy loads or navigating rugged terrain, the Silverado responds

with a roar of power and a smoothness that belies its brute strength, thanks to the Allison 1000 6-Speed Shiftable Automatic transmission. This is a powertrain designed not just to meet expectations, but to shatter them.

But the Silverado isn't just about raw power. It's a vehicle recognized for excellence, as evidenced by its collection of accolades. Named Top Recommended Truck by Edmunds and a winner in J.D. Power and Associates' APEAL Study, this Silverado is a model of automotive perfection. Its top ranking in the Initial Quality Study (IQS) and Vehicle Dependability Study (VDS) proves that this isn't just a powerhouse; it's a reliable and enduring companion for the long haul.

And let's not forget about the financial savvy of choosing this Silverado. Kelley Blue Book has honored it with the Best Resale Value Award for Full-Size Pickups, ensuring

that your investment today will continue to pay dividends in the future.

This 2015 Chevrolet Silverado 2500HD Diesel 4x4 LT isn't just a truck. It's a partner in your daily endeavors, a symbol of your discerning taste, and a wise investment. It's a vehicle that commands respect on the road and provides the assurance that, no matter what lies ahead, you're equipped to handle it with unmatched capability and style.

Don't miss the chance to own this paragon of automotive excellence. The Silverado is waiting to start its next chapter with a driver who appreciates the finer things in life — power, performance, and prestige. Are you ready to take the wheel?

Many of our trucks are Rust Free Southern Units!!! We Buy-Sell-Trade call us for Availability and Pricing 815-525-5000. Dealer Shall in no way be held liable for any errors or omissions to be found on these webpages. All prices are plus any applicable state taxes and service fees. We will do our best to keep all the information current and accurate, however the dealership should be contacted for final pricing and availability. Autoland Outlets is the midwest Premier Truck Store. Over 250 Trucks in Stock!! Over 150 are Diesels! 3/4 Tons, 1 Tons, Regular, Extended and Crew Cabs. Plus: Dump Trucks, Utility Trucks, and much more! Many New Trucks Arriving Daily!!! Thousands of Satisfied Customers! Over 25 Years in Business. Updated Daily 888-240-8674 ILLINOIS WARRANTY MAY APPLY CALL DEALERSHIP FOR DETAILS

Our Location :



Installed Options

Interior

- Air filtration- Front air conditioning- Floor mat material: rubber/vinyl- Floor mats: front
- Steering wheel trim: leather- Cruise control- Multi-function remote: keyless entry
- Power steering- Clock- Digital odometer- Multi-function display- Trip odometer
- Driver seat manual adjustments- Front seat type: 40-20-40 split bench
- Passenger seat manual adjustments- Rear seat folding: folds up
- Rear seat type: 60-40 split bench - Upholstery: cloth

Exterior

- Front bumper color: chrome- Pickup bed light- Tailgate: lift assist- Daytime running lights
- Exterior entry lights: approach lamps- Side mirror adjustments: power
- Side mirrors: heated- Spare wheel type: steel- Tire Pressure Monitoring System
- Wheels: aluminum alloy- Front wipers: variable intermittent- Power windows- Tinted glass

Option Packages

Factory Installed Packages

8 In. Diagonal Color Touch Screen Chevrolet MyLink Audio System

Includes 8 in. diagonal color touch screen audio system w/ Chevrolet MyLink, AM/FM/SiriusXM/HD w/USB ports, auxiliary jack, SD card slot, Bluetooth streaming audio for music and most phones, hands-free smartphone integration, Pandora Internet radio and voice-activated technology for radio and phone, and 4 customizable themes.

\$200

18 in. Forged Polished Aluminum Wheels

Includes 18 in. forged polished aluminum wheels w/ 18.0 in. x 8.0 in. steel spare wheel. Spare not included with (ZW9) pickup box delete unless a spare tire is ordered.

\$545

18.0 x 8.0 in. Full-Size Steel Spare Wheel

Includes 18.0 in x 8.0 in full size steel spare wheel for 18 in or 20 in. wheels and tires.

Electric Rear-Window Defogger

\$175

Power Adjustable Camper Style Mirrors

Includes auto-dimming inside rearview mirror, black outside heated power adjustable vertical camper manual-folding and extending mirrors, integrated turn signal indicator and lower convex spotter glass.	\$310
Spray-On Bed Liner	\$475
Heated Driver and Front Passenger Seats	\$250
LT Convenience Package Includes driver 10-way power seat adjuster w/ bench seats only, dual zone climate control, remote vehicle starter system (includes theft-deterrent system), MyLink 8 In. diagonal color touch audio system w/ 4 customizable themes, SiriusXM satellite radio, rear window defogger, rear vision camera, 110V power outlet and front fog lamps.	\$1,525
3.73 Rear Axle Ratio	\$100
Engine Block Heater	\$90
Exhaust Brake	
GVWR of 10000 lbs.	
Heavy Duty Locking Rear Differential	\$395
Heavy-Duty Trailering Equipment Includes 2.5 in. trailering hitch platform w/ 2.0 in. insert for HD, 7-wire harness w/ independent fused trailering circuits mated to a 7-way sealed connector to hook up parking lamps, backup lamps, right and left turn signals, an electric brake lead, battery and a ground, and integrated trailer brake controller. (The trailer connector also includes the 4-way for use on trailers without brakes - park, brake/turn lamps.)	\$510
Integrated Trailer Brake Controller	\$230
Northeast Emissions Requirements Includes Connecticut, Delaware, Maine, Maryland, Massachusetts, New Jersey, New York, Oregon, Pennsylvania, Rhode Island, Vermont and Washington state requirements.	
Option Packages Total	\$4,805