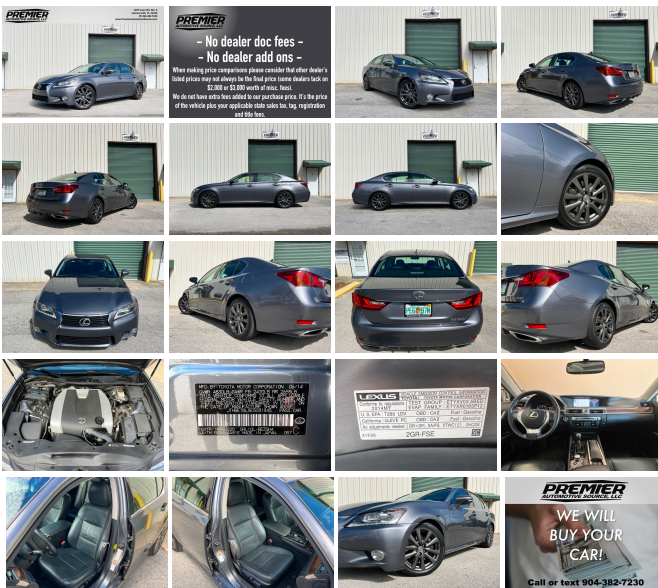


# 2014 Lexus GS 350

View this car on our website at [premierautomotivesource.com/7284490/ebrochure](http://premierautomotivesource.com/7284490/ebrochure)



3075 Leon Rd. Ste. 6  
 Jacksonville, FL 32246  
 Ph 904.382.7230  
 www.PremierAutomotiveSource.com

Our Price **\$0**

## Specifications:

- Year:** 2014
- VIN:** JTHBE1BLXE5041445
- Make:** Lexus
- Model/Trim:** GS 350
- Condition:** Pre-Owned
- Body:** Sedan
- Exterior:** [1H9] Nebula Gray Pearl
- Engine:** 3.5L V6 306hp 277ft. lbs.
- Interior:** Black Leather
- Transmission:** 8-Speed Automatic w/Sequential Shift Mode
- Mileage:** 129,800
- Drivetrain:** Rear Wheel Drive
- Economy:** City 19 / Highway 29

## 2014 LEXUS GS350

- NAVIGATION -
- BLUETOOTH -
- SATELLITE RADIO -
- PARKING SENSORS -
- BLIND SPOT MONITORS -
- SUNROOF -
- POWER REAR WINDOW SUNSHADE -
- HEATED & A/C VENTILATED FRONT SEATS -
- CLEAN CARFAX & GREAT SERVICE HISTORY -
- 2 OWNER FL CAR -
- TRADES WELCOME -

WE SELL & BUY WORLDWIDE

- WE SELL & SHIP WORLDWIDE -

- NO DEALER FEES, NO HIDDEN FEES! -

**CALL OR TEXT NOLAN @ 904-382-7230**

- LIVE WALK AROUND VIDEO AVAILABLE -

2014 Lexus GS350 Nebula gray with black leather interior, Navigation, bluetooth, USB, blind spot alert, front & rear parking sensors, sunroof, leather wrapped steering wheel, cruise control, rear view camera, heated and cooled front seats, rear sunshade. We just received this Lexus on trade from a previous customer for a new Lexus RX350. The Carfax is clean, no accidents or issues and it also shows consistent service history. It looks, runs, and drives great. Sale includes owners manual, 2 key, and factory floor mats. Call or Text Nolan: 904-382-7230.

ALL INVENTORY IS STORED INDOORS AND SHOWN BY APPOINTMENT. We can also set up a time to do a FaceTime/video call while we walk-around the vehicle and you can see the vehicle and ask questions. Trades accepted. No dealer fees, no dealer add ons, no hidden fees! When making price comparisons please consider that other dealer's listed prices may not always be the final price. We do not have extra fees tacked onto our purchase price. It's the price of the vehicle plus your applicable state sales tax, tag, registration and title fees.

For financing we recommend LightStream, they offer low-interest financing to people with good credit. LightStream has an easy online application process, and provides a quick response during business hours. This is a confidential process between you and LightStream. For more information go to

**<http://lightstream.com/?fact=14755&irad=391622&irmp=3040226>**

(Please note, we may receive a referral fee from LightStream through this link.)

---

2014 Lexus GS 350

Premier Automotive Source LLC - 904-382-7230 - View this car on our website at [premierautomotivesource.com/7284490/ebrochure](http://premierautomotivesource.com/7284490/ebrochure)

**Our Location :**



2014 Lexus GS 350

Premier Automotive Source LLC - 904-382-7230 - View this car on our website at [premierautomotivesource.com/7284490/ebrochure](http://premierautomotivesource.com/7284490/ebrochure)

## Installed Options

### Interior

- Air filtration- Front air conditioning: automatic climate control
- Front air conditioning zones: dual- Rear vents: second row- Floor mat material: carpet
- Floor mats: front- Shift knob trim: leather- Steering wheel trim: leather- Ambient lighting
- Cargo area light- Cruise control- Easy entry: power steering wheel
- Memorized settings: 3 driver- Power outlet(s): 12V- Power steering- Push-button start
- Rearview mirror: auto-dimming- Steering wheel: power tilt and telescopic- Tool kit
- Touch-sensitive controls- Universal remote transmitter: Homelink - garage door opener
- Clock- Compass- Digital odometer- External temperature display- Multi-function display
- Trip odometer- Driver seat power adjustments: 10- Front seat type: bucket
- Passenger seat power adjustments: 10- Rear seat type: bench
- Upholstery: leather-trimmed

### Exterior

- Exhaust: dual tip- Front bumper color: body-color- Mirror color: body-color
- Daytime running lights: LED- Exterior entry lights: approach lamps- Front fog lights
- Headlight cleaners- Taillights: LED- Side mirror adjustments: power
- Side mirrors: auto-dimming- Spare wheel type: steel- Tire Pressure Monitoring System
- Wheels: aluminum alloy- Front wipers: variable intermittent- Solar-tinted glass
- Window defogger: rear

## Option Packages

### Factory Installed Packages

<b>18 in. 5-Spoke Alloy Wheels w/Superchrome Finish</b>	
Includes 18-inch 5-spoke alloy wheels w/ Superchrome finish and 235/45R18 all-season tires.	\$865
<b>One-Touch Power Trunk</b>	\$400
<b>Navigation System</b>	\$1,735
Includes HDD navigation system, 12.3-inch high resolution screen w/ touch screen display, advanced voice command, Lexus Enform with Safety Connect, backup camera, Lexus Insider, SiriusXM NavTraffic, NavWeather, sports, stocks and fuel prices (one-year trial subscription).	
<b>Premium Package</b>	\$1,400
Includes heated and ventilated front seats with climate concierge, power rear sunshade and rain sensing wipers.	
<b>Blind Spot Monitor</b>	\$700
Includes blind spot monitor with rear cross traffic alert and power-folding mirrors.	
<b>Option Packages Total</b>	\$5,100

DEALER POLICIES: Please review all photos carefully and ask questions prior to making an offer if there is anything you are not sure about. We welcome pre-sale inspections. Any descriptions we make of vehicles shall not be construed as any type of warranty. Our pictures are as thorough and precise as we can make them. Please be advised that this is not a brand new vehicle. It is a pre-owned vehicle and has previously been driven, so therefore with respect to the miles there will most likely be average wear and tear, such as minor scratches, minor dings, or small rock chips. We do our best to disclose any substantial blemishes in our photos and descriptions. If our vehicles include manuals, service records or extra sets of keys, it will be shown in the pictures and noted in the description. The advertised mileage is a round number and may vary slightly from the exact mileage due to demo and test drives. Once a vehicle leaves our premises, no refunds, credits, or adjustments, will be issued. All Vehicles are conveyed AS-IS. Dealer neither makes nor implies any warranty on this or any vehicle. Any dispute that may arise shall take place under the laws of the state of Florida, in the state of Florida and all sales are subject to binding Arbitration under the rules of the American Arbitration Association. All applicable sales tax, tag and title fees apply. When we receive a vehicle into our inventory, sometimes the title is being held by a bank or lender as collateral for the previous loan or payoff. Occasionally there is a delay in receiving the title from these lending institutions after payoff of the loan for up to two weeks. While we usually have the titles in our possession, there are instances where we may be waiting for the title to arrive. We guarantee clean titles on our vehicles unless otherwise noted. In some cases we may hold titles until cashiers checks or other funds are cleared or unless other arrangements were agreed upon. Titles will be sent via Fedex for proper tracking. Thank you for your patience and understanding.

Premier Automotive Source LLC

[premierautomotivesource.com](http://premierautomotivesource.com)

904-382-7230

3075 Leon Rd

Jacksonville , FL 32246

© 2024 AutoRevo - All rights reserved. - Powered by AutoRevo