

# 2017 Ford F-250 Super Duty Platinum 4x4

View this car on our website at [texasmotorcars.com/7280581/ebrochure](http://texasmotorcars.com/7280581/ebrochure)



Our Price **\$42,977**

## Specifications:

<b>Year:</b>	2017
<b>VIN:</b>	1FT7W2BT5HED41361
<b>Make:</b>	Ford
<b>Stock:</b>	D41361
<b>Model/Trim:</b>	F-250 Super Duty Platinum 4x4
<b>Condition:</b>	Pre-Owned
<b>Body:</b>	Pickup Truck
<b>Exterior:</b>	[RR] Ruby Red Metallic Tinted Clearcoat
<b>Engine:</b>	Power Stroke 6.7L Biodiesel Turbo V8 440hp 925ft. lbs.
<b>Interior:</b>	Black
<b>Transmission:</b>	6-Speed Shifttable Automatic
<b>Mileage:</b>	133,494
<b>Drivetrain:</b>	4 Wheel Drive

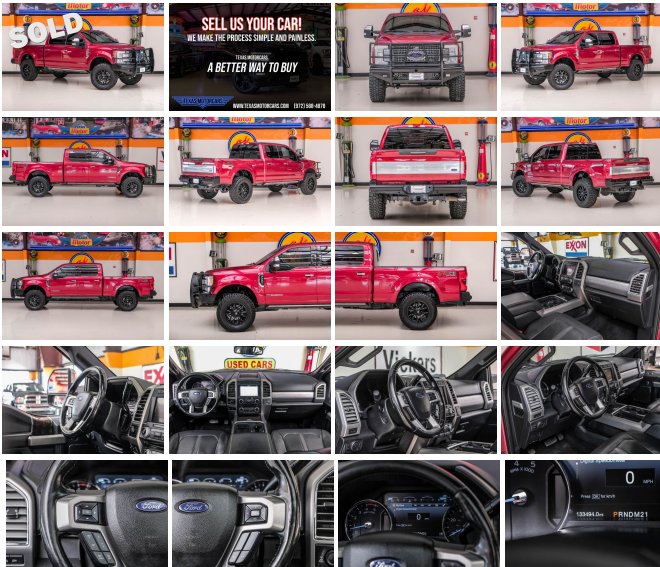
## 2017 Ford F-250 Super Duty Platinum 4x4

Dive into the world of luxury trucks with this stunning 2017 Ford F-250 Super Duty Platinum 4x4, a powerhouse of performance and elegance. The eye-catching red exterior is sure to turn heads, while the black leather interior whispers sophistication and comfort. Nestled under the hood is the formidable Power Stroke 6.7L Biodiesel Turbo V8 engine, delivering a heart-pounding 440hp and an incredible 925ft. lbs. of torque. Paired with a 6-Speed Shifttable Automatic transmission, this truck promises a smooth yet exhilarating ride.

This Ford F-250 doesn't just boast raw power; it's a technological marvel. The SYNC 3 Communications and Entertainment System offers seamless connectivity, while the Tough Bed Spray-In Bedliner ensures your cargo stays put. The Twin Panel Panoramic Moonroof floods the cabin with natural light, creating an airy and open atmosphere. For those who demand the best in off-road capability, the FX4 Off-Road Package includes hill descent control and skid plates, ensuring that no terrain is too tough for this rugged beauty.

When it comes to towing, the Ultimate Trailer Tow Camera System, part of the Platinum Ultimate Package, provides unparalleled visibility and confidence. The 3.55 Electronic Locking Axle Ratio and 5th Wheel/Gooseneck Hitch Prep Package make hauling heavy loads a breeze. And for those who need to customize their ride for work or play, the Upfitter Switches are a dream come true.

This Ford F-250 isn't just a truck; it's a statement. It's no surprise that it has been recognized with numerous awards, including Edmunds's Top Recommended Trucks and Luxury Trucks, J.D. Power and Associates's



Initial Quality Study (IQS) and Automotive Performance, Execution and Layout (APEAL) Study, and Kelley Blue Book's Brand Image Awards for Best Overall Truck Brand.

Don't miss the opportunity to own this embodiment of power and prestige. The 2017 Ford F-250 Super Duty Platinum 4x4 is more than just a vehicle; it's a lifestyle. Step into a world where capability meets luxury, and drive away with a truck that will serve you faithfully on every journey.

This vehicle has been reduced at below wholesale prices. No outside financing will be accepted!

READY for work and play! Give us a call today!

Can't make it in? We offer shipping all over the United States. Ask your salesperson for shipping quotes.

Financing is available with competitive rates! Get pre-approved in no time by filling out a credit application on the finance section of our website! We also offer industry leading, highly rated warranty options so you can select one perfect for your specific vehicle needs.

All vehicles are priced for QUICK SALE. Call us today to see how easy it is to buy a vehicle at Texas Motorcars.

Texas Motorcars in Addison is a family owned and operated business. We are committed to delivering the best possible service!

Se habla Español!

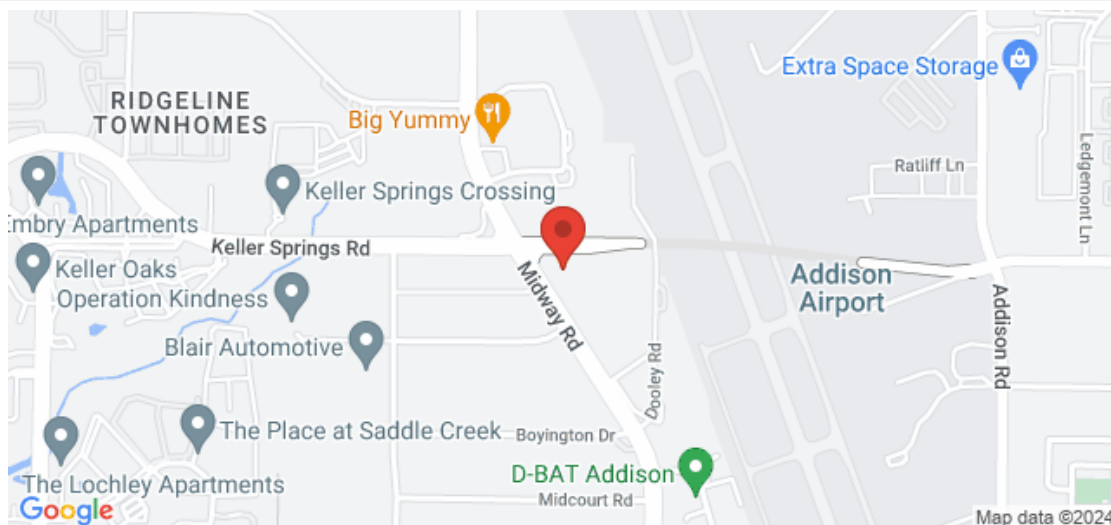
Texas Motorcars "A Better Way To Buy!"

---

2017 Ford F-250 Super Duty Platinum 4x4

Texas Motorcars - 972-521-7788 - View this car on our website at [texasmotorcars.com/7280581/ebrochure](http://texasmotorcars.com/7280581/ebrochure)

#### Our Location :



## Installed Options

### Interior

- Air filtration- Front air conditioning: automatic climate control
- Front air conditioning zones: dual- Rear vents: second row- Center console trim: leather
- Dash trim: wood- Door sill trim: illuminated scuff plate- Door trim: leather
- Floor mat material: carpet- Floor mats: front- Heated steering wheel
- Steering wheel trim: leather- Adjustable pedals: power- Ambient lighting- Cruise control
- Easy entry: power driver seat- Keypad entry- Memorized settings: 2 driver
- Multi-function remote: proximity entry system- Power outlet(s): 115V front
- Power steering: variable/speed-proportional- Push-button start
- Rearview mirror: auto-dimming- Remote engine start
- Steering wheel: power tilt and telescopic
- Universal remote transmitter: garage door opener- Clock- Compass
- Customizable instrument cluster- Digital odometer- External temperature display
- Instrument cluster screen size: 8 in.- Multi-function display- Powertrain hour meter
- Trip odometer- Driver seat: cooled- Driver seat power adjustments: 10
- Front seat type: captains chairs- Passenger seat: cooled
- Passenger seat power adjustments: 10- Rear seat folding: folds up
- Rear seat type: 60-40 split bench - Upholstery: leather

### Exterior

- Door handle color: chrome- Front bumper color: body-color- Mirror color: chrome
- Pickup bed light: LED- Running boards: illuminated- Tailgate: lift assist
- Exterior entry lights: approach lamps- Front fog lights: LED- Taillights: LED
- Side mirror adjustments: power- Side mirrors: driver side auto-dimming- Towing mirrors
- Spare tire kit- Spare wheel type: steel- Tire Pressure Monitoring System
- Wheels: aluminum alloy with painted accents
- Pickup sliding rear window: power horizontal- Power windows- Rear privacy glass
- Solar-tinted glass: front- Window defogger: rear

## Option Packages

### Factory Installed Packages

#### Tailgate Step

Includes Tailgate Assist with step and flip up grab bar. \$375

#### SYNC 3 Communications and Entertainment System

Includes SYNC 3 enhanced voice recognition communications and entertainment system with 911 assist and AppLink, Apple CarPlay, Android Auto, 110V/400W outlet, 8 In. LCD touchscreen in center stack with swiping, two smart charging USB ports, compass and clock display. \$115

["Tough Bed Spray-In Bedliner", "Includes tailgate guard, black box bed tie down hooks, and black bed attachment bolts."] \$495

["Twin Panel Panoramic Moonroof", "Includes twin panel power panoramic moonroof with map lights and moonroof switches."] \$1,295

["FX4 Off-Road Package", "Includes hill descent control, transfer case and fuel tank skid plates, off-road tuned shocks, and unique FX4 Off Road box decal."] \$295

["Platinum Ultimate Package", "Includes twin panel moonroof, lane-keeping alert, ultimate trailer tow camera system (includes 360 camera plus CHMSL camera), adaptive cruise control, and collision warning with brake support."] \$2,785

["Ultimate Trailer Tow Camera System", "Includes rear view camera, 360 degree camera system, rear CHMSL camera, trailer reverse guidance and LED center high-mounted stop lamp (display in center stack screen)."] \$710

["3.55 Electronic Locking Axle Ratio"] \$390

["5th Wheel/Gooseneck Hitch Prep Package", "Includes one frame under-bed cross member, five pickup bed attachment points with plugs, and one integrated 7-pin connector on drivers side pick-up bed wall."] \$370

["Upfitter Switches", "Includes six (6) switches located in overhead console."] \$165

Option Packages Total \$6,995

---

Texas Motorcars

[texasmotorcars.com](https://texasmotorcars.com)

972-521-7788

16000 Midway Rd

Addison, Texas 75001

© 2024 AutoRevo - All rights reserved. - Powered by [AutoRevo](#)