

racperformance.com
214-269-1570
3221 Skylane Dr.
Carrollton, TX 75006

RAC Performance

2004 Porsche 911 Carrera 40th Anniversary Edition

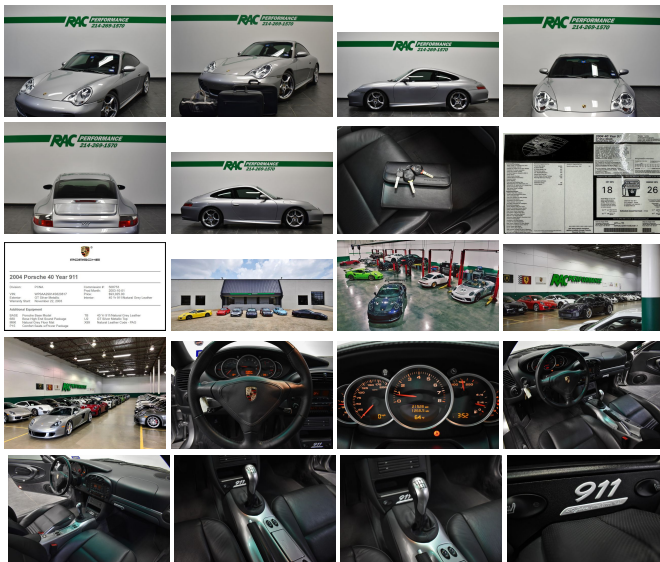
View this car on our website at racperformance.com/7280407/ebrochure



Our Price **\$0**

Specifications:

| | |
|----------------------|--------------------------------------|
| Year: | 2004 |
| VIN: | WP0AA29914S620817 |
| Make: | Porsche |
| Stock: | R3317 |
| Model/Trim: | 911 Carrera 40th Anniversary Edition |
| Condition: | Pre-Owned |
| Body: | Coupe |
| Exterior: | [U2] GT Silver Metallic |
| Engine: | 3.6L H6 345hp 274ft. lbs. |
| Interior: | Black Leather |
| Transmission: | 6-Speed Manual |
| Mileage: | 21,496 |
| Drivetrain: | Rear Wheel Drive |
| Economy: | City 16 / Highway 24 |



CLEAN CARFAX, 40-YEAR ANNIVERSARY LIMITED EDITION #261/1963, ALL ORIGINAL LUGGAGE INCLUDED, 6-SPEED MANUAL TRANSMISSION, LN IMS RETROFIT, RMS REPLACED @20.2K, FLYWHEEL REPLACED, FRESH ANNUAL SERVICE, NEW BILSTEIN PSS10 SUSPENSION(ORIGINALS INCLUDED), PORSCHE SHORT SHIFTER, 40 YR 911/NATURAL GREY LEATHER, BOSE HIGH END SOUND PACKAGE, COMFORT SEATS W/POWER PACKAGE, NATURAL GREY FLOOR MAT, NATURAL LEATHER CODE – PAG, GT SILVER METALLIC, 2-KEYS+VALET-KEY+BOOKS, !!! This car has been inspected by our certified technicians and is ready to drive home. Upgrades are available at RAC Performance. TUNES, EXHAUST, WHEELS, TIRES and MORE!

Contact our professional sales staff at 214-269-1570 for any questions or additional information. We also offer competitive finance rates as low as 5.9%.

We hand pick only the finest automobiles to sell and every vehicle gets a rigorous internal inspection by our certified technicians. At our 9000 square foot state of the art facility, RAC Performance offers service on Porsche, RUF, Ferrari, Maserati and Lamborghini models. We offer dealership quality service and repairs at competitive prices and only sell the finest vehicles! RAC Performance cannot guarantee the availability of vehicle books/manuals, additional keys, or additional accessories with vehicle purchase, unless otherwise stated in the vehicle description or by an RAC sales professional.

Stop by and check out our state-of-the-art Service Department, Performance Shop and Huge 32,000 square foot Indoor Showroom!

We facilitate door-to-door shipping to anywhere in the world at an affordable price.

www.RACPerformance.com

2004 Porsche 911 Carrera 40th Anniversary Edition

RAC Performance - 214-269-1570 - View this car on our website at racperformance.com/7280407/ebrochure

Vehicle History Report : as Of 04/27/2024

CARFAX

Snapshot

2004 PORSCHE 911 CARRERA



No accidents or damage reported to CARFAX



21 Service history records



3 Previous owners



Personal vehicle



Last owned in Texas



20,927 Last reported odometer reading



FREE CARFAX Report

See the full CARFAX Report for additional information

*carfax Snapshot is a reflection of available information on the date the report was pulled. carfax is constantly being updated with new information and is subject to change at any time.

Our Location :



2004 Porsche 911 Carrera 40th Anniversary Edition

RAC Performance - 214-269-1570 - View this car on our website at racperformance.com/7280407/ebrochure

Installed Options

Interior

- Front air conditioning- Shift knob trim: leather- Steering wheel trim: leather
- Center console- Cruise control- Multi-function remote: keyless entry- Power steering
- Clock- Trip odometer- Driver seat: heated- Driver seat power adjustments
- Front seat type: bucket- Passenger seat: heated- Passenger seat power adjustments
- Rear seat type: bucket- Upholstery: leather

Exterior

- Rear spoiler- Exterior entry lights: approach lamps- Front fog lights- Headlight cleaners
- Headlights: HID/Xenon- Side mirror adjustments: power- Side mirrors: heated
- Moonroof / Sunroof: power glass- Wheels: aluminum alloy- Power windows
- Window defogger: rear

RAC Performance

racperformance.com

214-269-1570

3221 Skylane Dr.

Carrollton, TX 75006

© 2024 AutoRevo - All rights reserved. - Powered by [AutoRevo](#)