

2013 Ford Escape SEL

View this car on our website at roadwayautosalesinc.com/7279902/ebrochure



Our Price **\$6,850**

Specifications:

Year:	2013
VIN:	1FMCU0HXXDUC94956
Make:	Ford
Model/Trim:	Escape SEL
Condition:	Pre-Owned
Body:	SUV
Exterior:	-
Engine:	EcoBoost 1.6L Turbo I4 178hp 184ft. lbs.
Interior:	-
Transmission:	6-Speed Shiftable Automatic
Mileage:	176,183
Drivetrain:	Front Wheel Drive
Economy:	City 23 / Highway 33

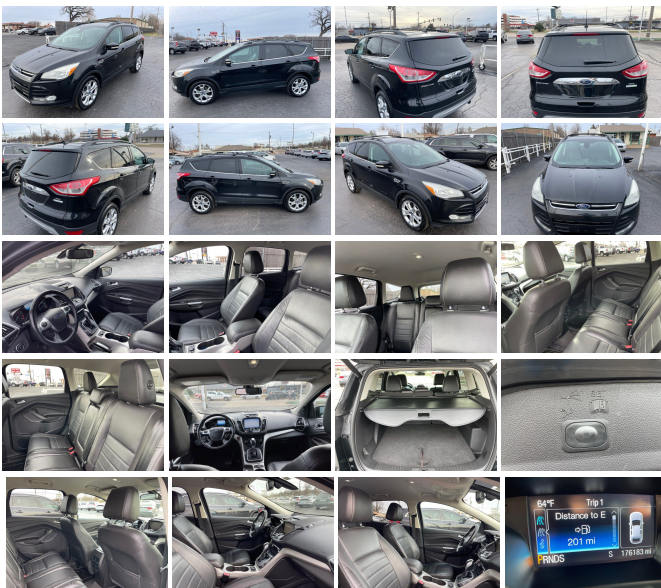
Step into the world of dynamic performance, exceptional efficiency, and award-winning design with the 2013 Ford Escape SEL. This compact SUV, equipped with a robust EcoBoost 1.6L Turbo I4 engine, delivers a thrilling 178 horsepower and 184 ft-lbs of torque, ensuring that your drive is not only responsive but also remarkably smooth, thanks to the 6-speed shiftable automatic transmission that puts control right at your fingertips.

But power is just the beginning. The 2013 Ford Escape SEL doesn't just promise an exhilarating ride; it delivers an incredibly efficient one too. Having earned a spot on Edmunds's Top 10 Most Fuel-Efficient SUVs and Crossovers, this vehicle is designed to maximize your miles and minimize your stops at the pump, making it the perfect companion for both daily commutes and adventurous road trips.

Beyond performance, the Escape SEL has been recognized for its ability to retain value over time, receiving an Honorable Mention in Edmunds's Best Retained Value category. This means that your investment today is a wise choice for the future, ensuring peace of mind that your vehicle will stand the test of time both in performance and in value.

The accolades don't stop there. As a testament to its universal appeal, the Escape SEL has also earned a spot on Edmunds's Top 10 Best-Selling Vehicles. Its popularity is a clear indicator of its reliability, versatility, and overall excellence. Families have taken notice too, with an Honorable Mention in Edmunds's Top Family Vehicles, highlighting the vehicle's suitability for those who prioritize space, comfort, and safety.

For those with an eye for style, the 2013 Ford Escape SEL does not disappoint. Kelley Blue Book's Brand Image Awards have recognized Ford as the Best Styling Brand, and this Escape model lives up to that



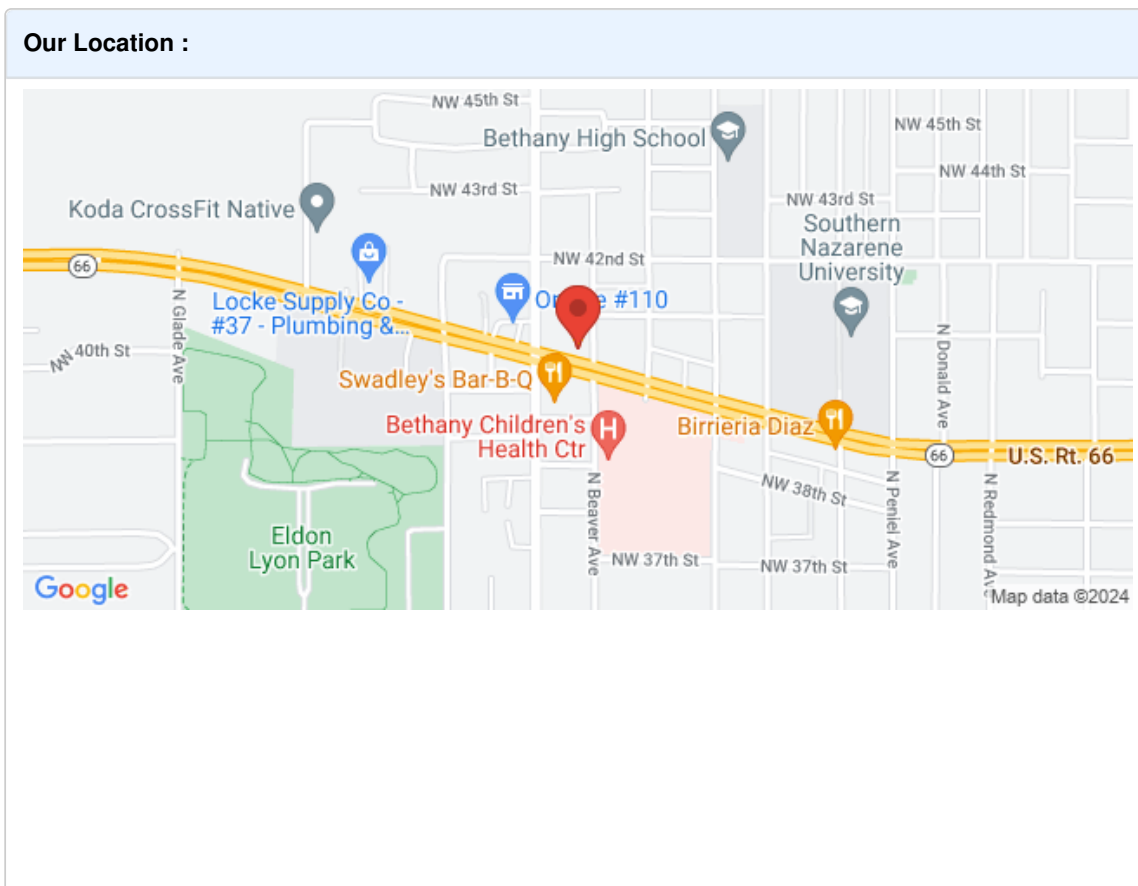
reputation. Its sleek lines, modern design, and commanding presence on the road make it a head-turner in any setting.

Inside, the Escape SEL envelops you in a cabin that is both functional and luxurious. The manufacturer's options and packages available on this model ensure that you can tailor your driving experience to your exact preferences, blending technology, comfort, and convenience in one harmonious package.

In summary, the 2013 Ford Escape SEL is a vehicle that excels across the board. It's a fuel-efficient, powerful, and stylish SUV that retains its value and meets the demands of both the daily driver and the weekend explorer. It's a top seller, a family favorite, and a design icon. Don't miss your chance to own a piece of this award-winning legacy. Visit us today and take the first step toward making the 2013 Ford Escape SEL your new driving companion. The open road awaits, and with the Escape SEL, you're set to conquer it in style, comfort, and confidence.

2013 Ford Escape SEL

Roadway Auto Sales - (405) 787-2211 - View this car on our website at roadwayautosalesinc.com/7279902/ebrochure



2013 Ford Escape SEL

Roadway Auto Sales - (405) 787-2211 - View this car on our website at roadwayautosalesinc.com/7279902/ebrochure

Installed Options

Interior

- Air filtration- Front air conditioning: automatic climate control
- Front air conditioning zones: dual- Rear vents: second row- Floor mat material: carpet
- Floor mats: front- Shift knob trim: alloy- Steering wheel trim: leather- Ambient lighting
- Capless fuel filler system- Cargo area light- Cruise control- Keypad entry
- Memorized settings: 2 driver- Multi-function remote: keyless entry
- Power outlet(s): 12V cargo area- Power steering- Rearview mirror: auto-dimming
- Steering wheel: tilt and telescopic- Universal remote transmitter: garage door opener
- Clock- Compass- Digital odometer- External temperature display- Multi-function display
- Trip odometer- Driver seat: heated- Driver seat power adjustments: 10
- Front seat type: bucket- Passenger seat: heated- Rear seat folding: flat
- Rear seat type: 60-40 split bench - Upholstery: premium leather

Exterior

- Exhaust: dual tip- Front bumper color: body-color- Mirror color: body-color
- Rear spoiler: roofline- Exterior entry lights: puddle lamps- Front fog lights
- Side mirrors: heated- Spare wheel type: steel- Tire Pressure Monitoring System
- Wheels: polished aluminum alloy- Front wipers: variable intermittent
- Liftgate window: manual flip-up- Power windows- Rear privacy glass
- Rear wiper: dual speed- Window defogger: rear

Roadway Auto Sales

roadwayautosalesinc.com

(405) 787-2211

7009 N.W. 39th Expressway

Bethany, OK 73008

© 2024 AutoRevo - All rights reserved. - Powered by AutoRevo