

2024 Ford Expedition MAX Limited

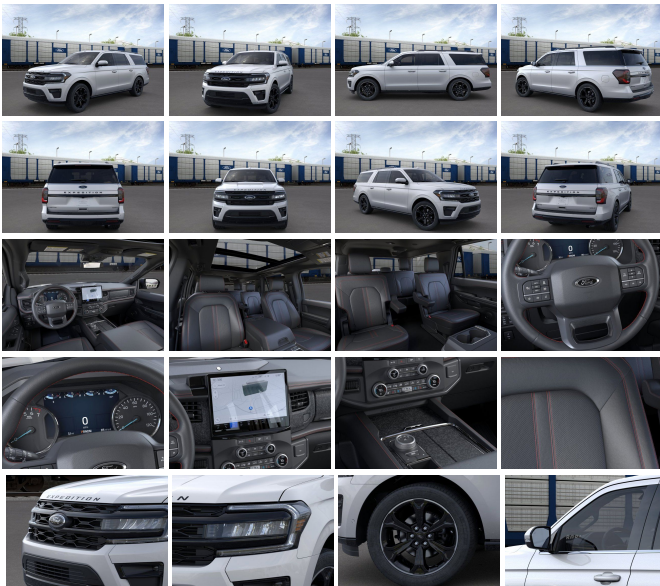
View this car on our website at askjorgelopez.com/7279499/ebrochure



Our Price **\$78,275**

Specifications:

Year:	2024
VIN:	1FMJK1K82REA47808
Make:	Ford
Stock:	EA47808
Model/Trim:	Expedition MAX Limited
Condition:	New
Body:	SUV
Exterior:	ICONIC SILVER METALLIC
Engine:	EcoBoost 3.5L Twin Turbo V6 380hp 470ft. lbs.
Interior:	STEALTH LEATHER BUCKET BLACK ONYX
Transmission:	10-Speed Shifttable Automatic
Mileage:	0
Drivetrain:	Rear Wheel Drive



"This vehicle exudes quality! You can't go wrong with this dependable 2024 Ford Expedition Max. Tire Specific Low Tire Pressure Warning, Side Impact Beams, Safety Canopy System Curtain 1st, 2nd And 3rd Row Airbags, Rear Child Safety Locks, Outboard Front Lap And Shoulder Safety Belts -inc: Height Adjusters and Pretensioners.*Fully-Loaded with Additional Options*EQUIPMENT GROUP 303A STEALTH PACKAGE -inc: 1st & 2nd Row Floor Mats w/Logo, Ford Co-Pilot360 Assist 2.0, Connected Navigation, 1 year of connectivity, pinch-to-zoom capability, live traffic, predictive destinations and route guidance, Reverse Brake Assist, 360-Degree Camera w/Split View, front/rear washer, Stealth Edition Package, Sport Center Console, Black Roof Rack Side Rails, Black Limited Tailgate Badge, LED Taillamp w/Black Bezels, Black Headlamp and Fog Lamp Bezels, Expedition Lettering on Hood, Ebony Black Bar and Mesh Grille, Ebony Black Tailgate Applique, Body Color Door Handles, Ebony Black Power Deployable Running Boards, Sport-Tuned Suspension, Continuous Controlled Damping (CCD) w/suspension road preview, Black Rear Bumper, Wheels: 22" Premium Black-Painted Aluminum, Tires: P285/45R22 110H AS BSW, Power-Folding Sideview Mirrors w/Autofold, power and heated glass, turn signal indicators, security approach lamps, driver/passenger side memory, driver's side auto-dimming and, ICONIC SILVER METALLIC, FRONT LICENSE PLATE BRACKET -inc: Standard in states requiring two license plates and optional to all others, EQUIPMENT GROUP 303A STEALTH PACKAGE -inc: 1st & 2nd Row Floor Mats w/Logo, Ford Co-Pilot360 Assist 2.0, Connected Navigation, 1 year of connectivity, pinch-to-zoom capability, live traffic, predictive destinations and route guidance, Reverse Brake Assist, 360-Degree Camera w/Split View, front/rear washer, Stealth Edition Package, Sport Center Console, Black Roof Rack Side Rails, Black Limited Tailgate Badge, LED Taillamp w/Black Bezels, Black Headlamp and Fog Lamp

Bezels, Expedition Lettering on Hood, Ebony Black Bar and Mesh Grille, Ebony Black Tailgate Applique, Body Color Door Handles, Ebony Black Power Deployable Running Boards, Sport-Tuned Suspension, Continuous Controlled Damping (CCD) w/suspension road preview, Black Rear Bumper, Wheels: 22" Premium Black-Painted Aluminum, Tires: P285/45R22 110H AS BSW, Power-Folding Sideview Mirrors w/Autofold, power and heated glass, turn signal indicators, security approach lamps, driver/passenger side memory, driver's side auto-dimming and, ENGINE: 3.5L ECOBOOST V6 (STD), 1ST & 2ND ROW FLOOR LINERS W/CARPET MATS, Window Grid Antenna, Wheels: 20" Bright Machined Aluminum -inc: dark carbonized gray-painted pockets, Trunk/Hatch Auto-Latch, Trip Computer.* Visit Us Today *You've earned this- stop by Tomball Ford located at 22702 Tomball Parkway, Tomball, TX 77375 to make this car yours today!"

2024 Ford Expedition MAX Limited

Ask Jorge Lopez - 281-205-0352 - View this car on our website at askjorgelopez.com/7279499/ebrochure

Our Location :



2024 Ford Expedition MAX Limited

Ask Jorge Lopez - 281-205-0352 - View this car on our website at askjorgelopez.com/7279499/ebrochure

Installed Options

Interior

- Air filtration- Front air conditioning: automatic climate control
- Front air conditioning zones: dual- Rear air conditioning: automatic climate control
- Rear vents: third row- Floor mat material: carpet- Floor mats: front
- Heated steering wheel- Steering wheel trim: leather- Adaptive cruise control
- Adaptive stop and go cruise control: semi-automatic- Adjustable pedals: power
- Ambient lighting- Autonomous lane guidance: lane centering- Capless fuel filler system
- Cargo area light- Easy entry: power rear seat- Keypad entry
- Memorized settings: 3 driver- Power outlet(s): 115V rear
- Power steering: variable/speed-proportional- Push-button start
- Rearview mirror: auto-dimming- Remote engine start
- Steering wheel: power tilt and telescopic
- Universal remote transmitter: garage door opener- Wireless charging station: front- Clock
- Compass- Customizable instrument cluster- Digital odometer
- External temperature display- Instrument cluster screen size: 8 in.- Multi-function display
- Trip odometer- Driver seat: heated- Driver seat power adjustments: 10
- Front seat type: bucket- Passenger seat: heated- Passenger seat power adjustments: 8
- Rear seat: heated- Rear seat folding: flat- Rear seat power adjustments: reclining
- Rear seat type: captains chairs- Third row seat folding: fold flat into floor
- Third row seat type: 40-60 split bench - Upholstery: leather-trimmed

Exterior

- Active grille shutters- Door handle color: body-color with chrome accents
- Grille color: black with chrome accents - Mirror color: body-color- Running boards
- Daytime running lights- Exterior entry lights: approach lamps- Front fog lights: LED
- Taillights: LED- Side mirror adjustments: power- Side mirrors: heated- Roof rails: chrome
- Spare wheel type: steel- Tire Pressure Monitoring System
- Wheels: aluminum alloy with painted accents- Laminated glass: acoustic
- Liftgate window: manual flip-up- Power windows: safety reverse- Rear privacy glass
- Rear wiper: intermittent- Solar-tinted glass: front- Window defogger: rear

Ask Jorge Lopez

askjorgelopez.com

281-205-0352

22702 Tomball Parkway

Tomball, TX 77375

© 2024 AutoRevo - All rights reserved. - Powered by AutoRevo