

## 2014 Ford Explorer XLT

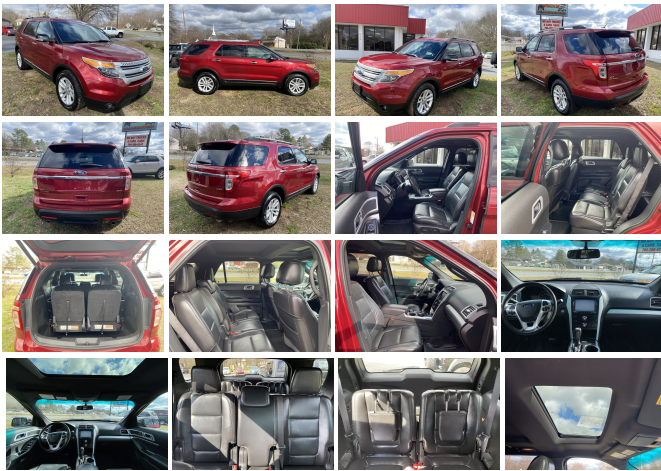
View this car on our website at [carolinatruckhq.com/7279040/ebrochure](http://carolinatruckhq.com/7279040/ebrochure)



Our Price **\$13,900**

### Specifications:

<b>Year:</b>	2014
<b>VIN:</b>	1FM5K8D82EGB47414
<b>Make:</b>	Ford
<b>Stock:</b>	10930
<b>Model/Trim:</b>	Explorer XLT
<b>Condition:</b>	Pre-Owned
<b>Body:</b>	SUV
<b>Exterior:</b>	RED
<b>Engine:</b>	3.5L V6 290hp 255ft. lbs.
<b>Interior:</b>	Cloth
<b>Transmission:</b>	6-Speed Shiftable Automatic
<b>Mileage:</b>	102,313
<b>Drivetrain:</b>	4 Wheel Drive
<b>Economy:</b>	City 12 / Highway 17



2014 Ford Explorer XLT

Carolina Truck Headquarters - 9802796287 - View this car on our website at [carolinatruckhq.com/7279040/ebrochure](http://carolinatruckhq.com/7279040/ebrochure)

## Our Location :



2014 Ford Explorer XLT

Carolina Truck Headquarters - 9802796287 - View this car on our website at [carolinatruckhq.com/7279040/ebrochure](http://carolinatruckhq.com/7279040/ebrochure)

## Installed Options

### Interior

- Air filtration- Front air conditioning- Rear air conditioning: independently controlled
- Floor mat material: carpet- Floor mats: front- Shift knob trim: alloy
- Steering wheel trim: alloy- Capless fuel filler system- Cargo area light- Cruise control
- Keypad entry- Multi-function remote: keyless entry- Power outlet(s): 12V cargo area
- Power steering- Steering wheel: tilt and telescopic- Clock- Compass- Digital odometer
- External temperature display- Multi-function display- Trip odometer
- Driver seat power adjustments: 6- Front seat type: bucket
- Passenger seat power adjustments: 6- Rear seat folding: flat
- Rear seat type: 60-40 split bench - Third row seat folding: split
- Third row seat type: 50-50 split bench - Upholstery: cloth

### Exterior

- Door handle color: chrome- Exhaust: dual tip- Front bumper color: body-color
- Rear spoiler: roofline- Exterior entry lights: puddle lamps- Front fog lights- Taillights: LED
- Side mirrors: heated- Roof rack crossbars: black- Spare wheel type: steel
- Tire Pressure Monitoring System- Wheels: painted aluminum alloy
- Front wipers: speed sensitive- Power windows- Rear privacy glass
- Rear wiper: dual speed- Window defogger: rear

Carolina Truck Headquarters

[carolinatruckhq.com](http://carolinatruckhq.com)

9802796287

923 N Cannon Blvd  
Kannapolis, NC 28083

© 2024 AutoRevo - All rights reserved. - Powered by AutoRevo