

# 2024 Jeep Wrangler Unlimited Sport 4X4 SKY TOP,DUPONT KEVLAR,LIFTED

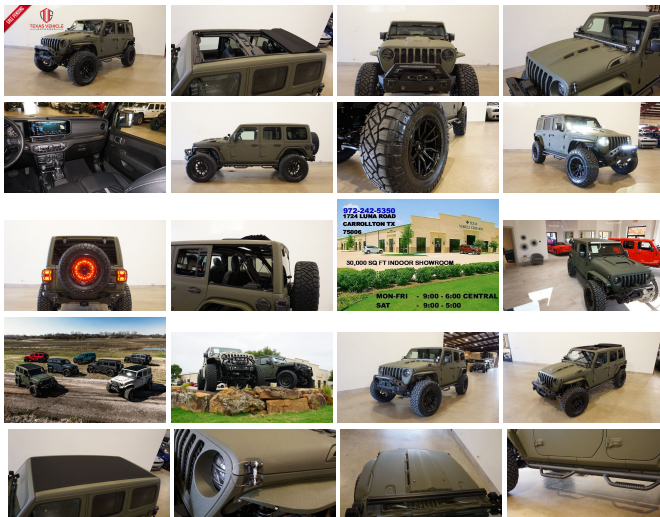
View this car on our website at [tveauto.com/7276684/ebrochure](https://tveauto.com/7276684/ebrochure)



Our Price **\$96,900**

## Specifications:

<b>Year:</b>	2024
<b>VIN:</b>	1C4PJXDN5RW169175
<b>Make:</b>	Jeep
<b>Stock:</b>	169175
<b>Model/Trim:</b>	Wrangler Unlimited Sport 4X4 SKY TOP,DUPONT KEVLAR,LIFTED
<b>Condition:</b>	Pre-Owned
<b>Body:</b>	SUV
<b>Exterior:</b>	Green
<b>Engine:</b>	2.0L Turbo I4 270hp 295ft. lbs.
<b>Interior:</b>	Black Leather
<b>Transmission:</b>	8-Speed Shifttable Automatic
<b>Mileage:</b>	47
<b>Drivetrain:</b>	4 Wheel Drive
<b>Economy:</b>	City 20 / Highway 20



NATION WIDE FINANCING

SUBMIT CREDIT APP [WWW.TVEAUTO.COM](https://www.tveauto.com)

OR CALL 972-242-5350

**"TANK GREEN EDITION"**

CUSTOM BUILT **KEVLAR** 2024 JEEP  
WRANGLER JL UNLIMITED SPORT 4X4  
WITH 22S PACKAGE

**UPGRADES INCLUDE:**

- \* TANK GREEN KEVLAR COATING
- \* 2.0L I4 TURBO ENGINE WITH START STOP
- \* SKY ONE-TOUCH POWER TOP WITH REMOVABLE REAR QUARTER WINDOWS
- \* CUSTOM ALEA BLACK LEATHER WITH SILVER STITCHING
- \* FACTORY REMOTE START
- \* REMOTE PROXIMITY KEYLESS ENTRY
- \* CONVENIENCE GROUP
- \* TECHNOLOGY GROUP
- \* SAFETY GROUP
- \* FACTORY 12.3 INCH TOUCH SCREEN DISPLAY WITH HD AM/FM/SIRIUS STEREO & ALPINE PREMIUM AUDIO SYSTEM
- \* FACTORY BACK-UP CAMERA
- \* U-CONNECT
- \* DV8 OFF ROAD FS-25 STUBBY FRONT BUMPER WITH LED LIGHT BAR & LED FOGLIGHTS
- \* FRONT D-RINGS & ISOLATORS (TANK GREEN)
- \* SMITTYBILT NEW GEN 3 "X20" 10,000 LB WATERPROOF AND WIRELESS CONTROL WINCH WITH SYNTHETIC ROPE
- \* FACTOR 55 PROLINK (BLACK)
- \* FACTORY LED HEADLIGHTS
- \* RUGGED RIDGE BLACK HEADLIGHT GUARDS
- \* NEW JL CUSTOM VENTED HOOD
- \* DRAKE OFF ROAD HOOD LATCHES
- \* DV8 OFF ROAD JL SLIM STEEL FENDER FLARES
- \* DV8 OFF ROAD FRONT & REAR INNER FENDERS
- \* TERAFLX 2.5" SUSPENSION LIFT KIT WITH TFRFX FX FAI CON SHOCKS

- \* TERAFLX FALCON STABILIZER KIT
- \* VOSWITCH 6 CHANNEL CUSTOM INTEGRATED SWITCH PANEL
- \* 50" LED LIGHT BAR AND 4 RIGID INDUSTRIES DUALY D2 LED PILLAR LIGHTS
- \* SMITTYBILT BLACK TUBULAR STEPS
- \* MOPAR BLACK FUEL DOOR
- \* EVOLUTION 2 BLACK LED TAIL LIGHTS
- \* RUGGED RIDGE BLACK TAIL LIGHT GUARDS
- \* RUGGED RIDGE SPARTACUS HD HINGE KIT
- \* RUGGED RIDGE LED THIRD BRAKE LIGHT RING
- \* DV8 OFF ROAD REAR BUMPER WITH REAR PARK DISTANCE SENSORS
- \* REAR D-RINGS & ISOLATORS (TANK GREEN)
- \* ALL WEATHER FLOOR MATS
- \* TAZER JL PROGRAMMER WITH SPEEDOMETER CALIBRATION
- \* 20" FUEL MATTE BLACK "REBEL 5" WHEELS
- \* BRAND NEW NITTO RIDGE GRAPPLER 37X13.50R/20 TIRES

**WE BUILD EVERY JEEP WITH PRIDE! DO NOT HESITATE TO CALL US WITH THIS JEEP BUILD. WE CAN MAKE CHANGES TO THIS JEEP BUILD OR CUSTOM BUILD ANY JEEP TO YOUR PREFERENCE. GIVE US A CALL @ 972-242-5350 OR STOP BY FOR A TEST DRIVE. 1724 LUNA RD IN CARROLLTON - 2 MILES NORTH OF 635.**

Vehicle History Report : as Of 07/21/2024



Snapshot

2024 JEEP WRANGLER SPORT S



No accidents or damage reported to CARFAX



3 Service history records



2 Previous owners



Personal vehicle



Last owned in New Jersey



1,665 Last reported odometer reading



**FREE CARFAX Report**

See the full CARFAX Report for additional information

\*carfax Snapshot is a reflection of available information on the date the report was pulled. carfax is constantly being updated with new information and is subject to change at any time.

Our Location :



2024 Jeep Wrangler Unlimited Sport 4X4 SKY TOP,DUPONT KEVLAR,LIFTED

Texas Vehicle Exchange - 972-242-5350 - View this car on our website at [veauto.com/7276684/ebrochure](http://veauto.com/7276684/ebrochure)

## Installed Options

### Interior

- Front air conditioning- Rear vents: second row- Floor mat material: carpet
- Floor mats: front- Adaptive cruise control
- Adaptive stop and go cruise control: semi-automatic- Ambient lighting- Cargo area light
- Footwell lights- Multi-function remote: keyless entry- Power outlet(s): 12V cargo area
- Power steering: variable/speed-proportional- Push-button start
- Steering wheel: tilt and telescopic- Tool kit- Clock- Compass- Digital odometer
- External temperature display- Multi-function display- Trip odometer
- Front seat type: bucket- Rear seat folding: split- Rear seat type: 60-40 split bench
- Upholstery: cloth- Upholstery accents: contrast stitching

### Exterior

- Exterior entry lights: approach lamps- Front fog lights- Side mirrors: heated
- Removable roof: soft top- Spare tire size: full-size matching- Spare wheel type: aluminum
- Tire Pressure Monitoring System- Wheels: painted aluminum alloy
- Front wipers: variable intermittent- Power windows: safety reverse
- Solar-tinted glass: front- Tinted glass: windshield

## Option Packages

### Factory Installed Packages

#### Sky One-Touch Power Top

Includes power-retractable canvas roof panel, removable rear quarter windows, quarter window storage bag, rear window defroster, and rear window wiper and washer. Removal of the hard top is not recommended by the manufacturer.

\$3,995

#### Convenience Group

Includes 2-door passive entry, air conditioning w/auto temp control, air filtering, cluster 7.0" TFT color display, heated front seats, heated steering wheel, remote start system, SiriusXM satellite radio, and universal garage door opener.

\$1,995

#### Quick Order Package 22S

Includes vehicle with standard equipment, 2.0L I4 turbo engine, 8-speed automatic transmission, aux battery, non-lock fuel cap w/o discriminator, stop-start dual battery system, adaptive cruise control w/ stop, anti-lock 4-wheel disc brakes, and Selec-Speed Control.

#### Safety Group

Includes auto high beam headlamp control, blind spot and cross path detection, injection molded black rear bumper, LED taillamps, and ParkSense rear park assist system.

\$1,395

#### Technology Group

Includes 240-amp alternator and alpine premium audio system.

\$1,295

#### Option Packages Total

\$8,680

Texas Vehicle Exchange

[tveauto.com](http://tveauto.com)

972-242-5350

1724 Luna Road

Carrollton, TX 75006

© 2024 AutoRevo - All rights reserved. - Powered by AutoRevo