

# 2015 Ford Explorer Police Interceptor Utility AWD

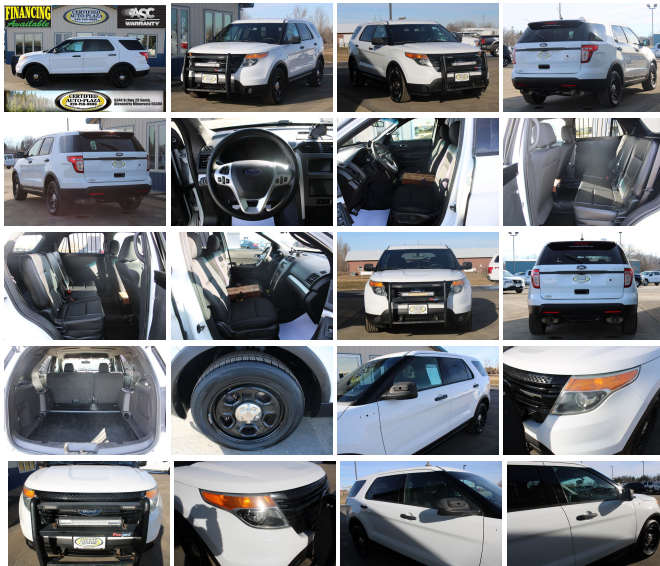
View this car on our website at [certifiedautoplaaza.com/7276349/ebrochure](http://certifiedautoplaaza.com/7276349/ebrochure)



Our Price **\$8,995**

## Specifications:

<b>Year:</b>	2015
<b>VIN:</b>	1FM5K8ARXFGC68187
<b>Make:</b>	Ford
<b>Stock:</b>	C68187
<b>Model/Trim:</b>	Explorer Police Interceptor Utility AWD
<b>Condition:</b>	Pre-Owned
<b>Body:</b>	SUV
<b>Exterior:</b>	[YZ] Oxford White
<b>Engine:</b>	3.7L V6 304hp 279ft. lbs.
<b>Interior:</b>	Charcoal Black Cloth
<b>Transmission:</b>	6-Speed Automatic
<b>Mileage:</b>	141,233
<b>Drivetrain:</b>	All Wheel Drive
<b>Economy:</b>	City 12 / Highway 17



ALL WHEEL DRIVE — 3.7L V6 ENGINE — 6-SPEED AUTOMATIC TRANSMISSION — OXFORD WHITE EXTERIOR — CHARCOAL INTERIOR — POWER ADJUSTABLE DRIVERS SEAT — ADJUSTABLE PEDALS — FRONT CLOTH BUCKET SEATS — REAR LEATHER BENCH SEATS — 4.2" INFOTAINMENT TOUCHSCREEN — AM/FM RADIO — USB PORT — BLACK VINYL FLOOR LINING — SOS POST CRASH ALERT SYSTEM — REAR TOW HOOKS — 18" STEEL WHEELS — EXCELLENT CONDITION!

Step into the realm of power, durability, and unmatched capability with the 2015 Ford Explorer Police Interceptor Utility AWD. A vehicle that's not just built, but engineered to withstand the rigors of high-intensity situations, now ready to serve as your steadfast companion on every journey. With its striking white exterior, this Ford Explorer exudes a commanding presence on the road, while the black cloth interior provides a comfortable and practical space for all your adventures.

Under the hood lies the heart of this powerhouse, a robust 3.7L V6 engine that pumps out an impressive 304 horsepower and 279 ft. lbs. of torque. This isn't just any engine; it's a testament to Ford's commitment to performance, reliability, and efficiency. Paired with a smooth-shifting 6-Speed Automatic transmission, you'll experience a ride that's not only exhilarating but also refined and responsive.

The all-wheel-drive system is the silent hero, providing you with the traction and control necessary to tackle any road condition with confidence. Whether you're navigating through a torrential downpour or powering over rough terrain, the 2015 Ford Explorer Police Interceptor Utility AWD ensures a secure and stable drive.

Step inside, and you'll be greeted by a spacious and thoughtfully designed cabin. The black cloth seats offer a perfect combination of durability and comfort, making both short commutes and long journeys a pleasure. The interior is not just about comfort; it's about creating an environment that's functional and driver-focused, ensuring that every control is within easy reach and every drive is a seamless experience.

As a Kelley Blue Book's Best Buy: Midsize SUV Finalist and boasting the 5-Year Cost to Own: Best Full-Size SUV/Crossover award, this vehicle is a testament to its exceptional value and low cost of ownership. These prestigious accolades reflect the vehicle's outstanding performance, comfort, and reliability, assuring you that this Ford Explorer is a smart and economical choice.

The manufacturer options and packages included with this vehicle are designed to enhance your driving experience, providing you with the convenience and features that matter most. Every aspect of this vehicle has been carefully considered to ensure that it meets the highest standards of quality and functionality.

This 2015 Ford Explorer Police Interceptor Utility AWD isn't just a car; it's a statement. It's a vehicle that stands for strength, resilience, and the ability to conquer any challenge that lies ahead. It's an opportunity to own a piece of Ford's legacy of building vehicles that are tough, capable, and ready for anything.

Don't miss your chance to take the wheel of this exceptional vehicle. Whether you're seeking a reliable family SUV or a versatile and powerful utility vehicle, the 2015 Ford Explorer Police Interceptor Utility AWD is ready to exceed your expectations. Visit us today, and experience the thrill of driving a vehicle that's built for life's toughest demands. Your adventure awaits!

---

2015 Ford Explorer Police Interceptor Utility AWD

Certified Auto Plaza - 320-759-9999 - View this car on our website at [certifiedautoplaza.com/7276349/ebrochure](http://certifiedautoplaza.com/7276349/ebrochure)

#### Our Location :



## Installed Options

### Interior

- Air filtration- Front air conditioning- Adjustable pedals: power- Capless fuel filler system
- Cargo area light- Cruise control- Power steering- Sun visors- Clock- Digital odometer
- Multi-function display- Trip odometer- Driver seat power adjustments: 6
- Front seat type: bucket- Rear seat folding: flat- Rear seat type: 60-40 split bench
- Upholstery: cloth

### Exterior

- Exhaust: dual tip- Front bumper color: body-color- Rear spoiler: roofline- Taillights: LED
- Spare wheel type: steel- Tire Pressure Monitoring System- Wheels: steel
- Front wipers: speed sensitive- Laminated glass: acoustic- Power windows: front
- Rear privacy glass- Rear wiper: dual speed- Window defogger: rear

MPG based on 2008 -2009 EPA mileage estimates, reflecting new EPA fuel economy methods beginning with 2008 models. Use for comparison purposes only. Do not compare to models before 2008. Your actual mileage will vary depending on how you drive and maintain your vehicle.&nbsp; Payments based on standard term at 8% interest with tax title and licence down. (for every \$1000 cash down payment is reduced approximately \$20)

Certified Auto Plaza

[certifiedautoplaza.com](http://certifiedautoplaza.com)

320-759-9999

6344 St Hwy 29 South

Alexandria, Minnesota 56308

© 2024 AutoRevo - All rights reserved. - Powered by AutoRevo