

2021 Cadillac Escalade Premium Luxury Platinum

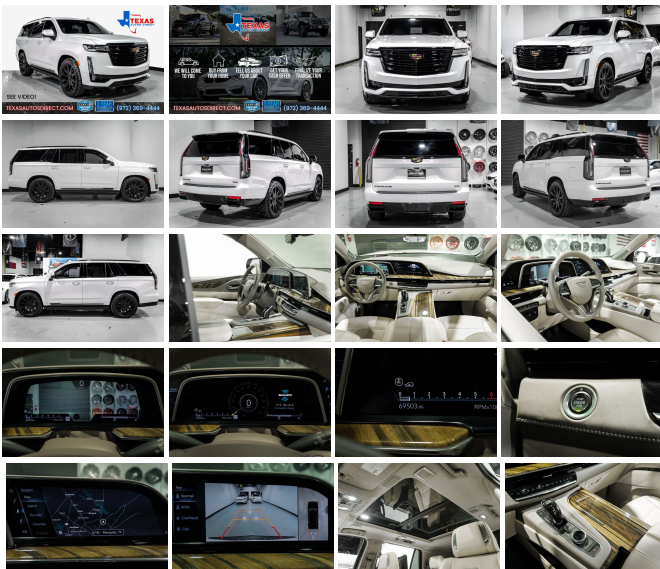
View this car on our website at texasautosdirect.com/7273394/ebrochure



Price **\$73,747**

Specifications:

Year:	2021
VIN:	1GYS4DKLXMR193443
Make:	Cadillac
Stock:	193443
Model/Trim:	Escalade Premium Luxury Platinum
Condition:	Pre-Owned
Body:	SUV
Exterior:	Crystal White Tricoat
Engine:	EcoTec3 6.2L V8 420hp 460ft. lbs.
Interior:	Whisper Beige With Gideon Accents Leather
Transmission:	10-Speed Shiftable Automatic
Mileage:	69,451
Drivetrain:	4 Wheel Drive
Economy:	City 13 / Highway 19



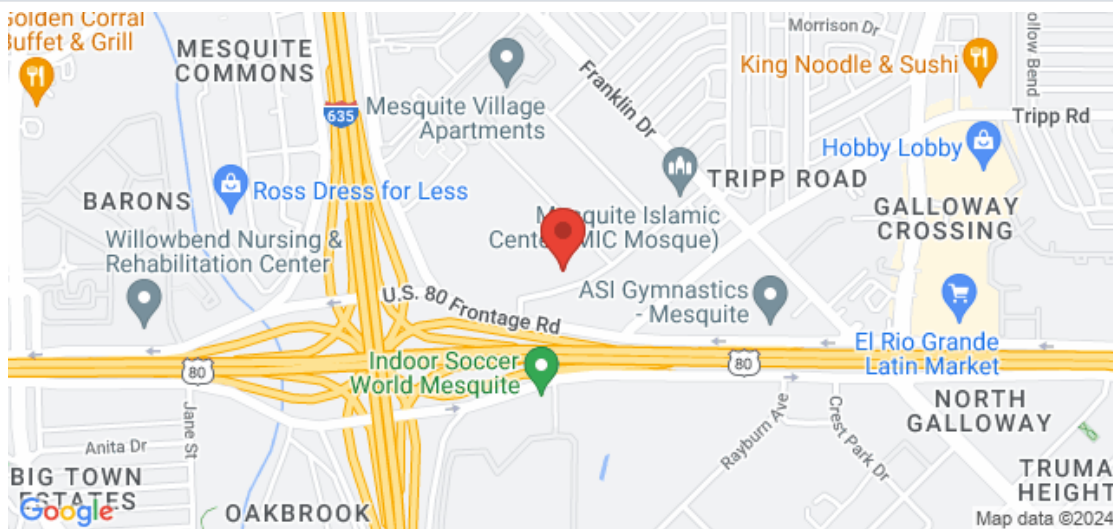
Driver Assist Tech Package (Adaptive Cruise Control, Air Ride Adaptive Suspension, Automatic Seat Belt Tightening, Enhanced Automatic Emergency Braking, Illuminating Front & Rear Sill Plates, Reverse Automatic Braking, and Soft Closing Front & Rear Doors), Preferred Equipment Group 1SG (Air Ionizer, AKG Studio Reference 36-Speaker Audio System, Door Lock & Latch Shields, Electronic Limited-Slip Differential, Enhanced Automatic Parking Assist, Floor Console w/Covered Storage, Glass Breakage Sensor, Hitch Guidance w/Hitch View, Integrated Trailer Brake Controller, In-Vehicle Trailering System App, Lane Keep Assist w/Lane Departure Warning, Platinum Interior Trim, Power Panoramic Tilt-Sliding Sunroof, Rear Camera Mirror, Rear Camera Mirror Washer, Rear Cross Traffic Alert, Rear Seat Entertainment System, Reconfigurable Full-Color Head-Up Display, Running Board Assist Steps, Theft-Deterrent Alarm System, Trailer Side Blind Zone Alert, Vehicle Inclination Sensor, and Vehicle Interior Movement Sensor), 16.9" Diagonal OLED Infotainment Screen, 2-Presets Memory For Driver Seat Adjuster, 3.23 Axle Ratio, 3rd row seats: split-bench, 4-Way Power Driver Lumbar Seat Adjuster, 4-Way Power Front Passenger Lumbar Seat Adjuster, 4-Wheel Disc Brakes, 8-Way Power Driver Seat Adjuster, 8-Way Power Front Passenger Seat Adjuster, A/V remote, ABS brakes, Adaptive suspension, Air Conditioning, Alloy wheels, AM/FM radio: SiriusXM with 360L, Apple CarPlay/Android Auto, Audio memory, Auto High-beam Headlights, Auto tilt-away steering wheel, Auto-dimming door mirrors, Automatic temperature control, Brake assist, Bumpers: body-color, Compass, Cooled Console w/Covered Storage, Delay-off headlights, Door auto-latch, Driver door bin, Driver vanity mirror, Dual front impact airbags, Dual front side impact airbags, Electronic Stability Control, Emergency communication system: OnStar and Cadillac connected services

capable, Four wheel independent suspension, Front anti-roll bar, Front Bucket Seats, Front Center Armrest w/Storage, Front dual zone A/C, Front License Plate Bracket, Front reading lights, Full Semi-Aniline Leather Seats, Fully automatic headlights, Garage door transmitter, Genuine wood console insert, Genuine wood dashboard insert, Genuine wood door panel insert, HD Radio, Headphones, Heads-Up Display, Heated & Ventilated Driver & Front Passenger Seats, Heated door mirrors, Heated Driver & Front Passenger Seats, Heated front seats, Heated rear seats, Heated steering wheel, Illuminated entry, Leather steering wheel, Low tire pressure warning, Magnetic Ride Control Suspension, Memory seat, Navigation System, Night Vision, Occupant sensing airbag, Outside temperature display, Overhead airbag, Overhead console, Panic alarm, Passenger door bin, Passenger vanity mirror, Power door mirrors, Power driver seat, Power Liftgate, Power Lumbar Massage Driver Seat, Power Lumbar Massage Front Passenger Seat, Power moonroof, Power passenger seat, Power steering, Power windows, Power-Retractable Assist Steps, Puddle Lamps w/Cadillac Crest (LPO), Radio data system, Radio: AM/FM/SiriusXM w/Navigation, Rain sensing wipers, Rear air conditioning, Rear anti-roll bar, Rear audio controls, Rear reading lights, Rear window defroster, Rear window wiper, Remote keyless entry, Roof rack: rails only, Security system, SiriusXM w/360L, Speed control, Split folding rear seat, Spoiler, Steering wheel memory, Steering wheel mounted audio controls, Tachometer, Teen Driver, Telescoping steering wheel, Tilt steering wheel, Traction control, Trip computer, Turn signal indicator mirrors, Variably intermittent wipers, Ventilated front seats, Voltmeter, Wheels: 22" 10-Spoke Polished Alloy, and Wireless Apple CarPlay/Wireless Android Auto. 2021 Cadillac Escalade Premium Luxury Platinum 4WD 10-Speed Automatic with Overdrive 6.2L V8 Crystal White Tricoat

Awards:
* ALG Residual Value

2021 Cadillac Escalade Premium Luxury Platinum
Texas Autos Direct - (972) 369-4444 - View this car on our website at [texasautosdirect.com/7273394/ebrochure](https://www.texasautosdirect.com/7273394/ebrochure)

Our Location :



Installed Options

Interior

- Air filtration: ionizing- Front air conditioning: automatic climate control
- Front air conditioning zones: dual - Rear air conditioning: automatic climate control
- Center console trim: leather- Dash trim: leather- Door sill trim: illuminated scuff plate
- Door trim: leather- Floor mat material: carpet- Floor mats: front
- Headliner trim: faux suede- Heated steering wheel- Interior accents: woodgrain
- Shift knob trim: chrome- Steering wheel trim: leather
- Active parking system: semi-automatic- Adaptive cruise control
- Adaptive stop and go cruise control: semi-automatic - Ambient lighting: color-adjustable
- Capless fuel filler system- Cargo area light- Footwell lights: color-adjustable
- Memorized settings: 2 driver- Power outlet(s): 115V cargo area
- Power steering: variable/speed-proportional- Push-button start
- Rearview mirror: auto-dimming- Remote engine start
- Steering wheel: power tilt and telescopic
- Universal remote transmitter: garage door opener - Wireless charging station: front- Clock
- Compass- Customizable instrument cluster- Digital odometer
- External temperature display- Head-up display
- Instrument cluster screen size: 7.2 in. and 14.2 in. (dual) - Multi-function display
- Trip odometer- Driver seat: heated- Driver seat power adjustments: 16
- Front seat type: bucket - Passenger seat: heated
- Passenger seat power adjustments: 16- Rear seat: heated- Rear seat type: bucket
- Third row seat folding: flat- Third row seat type: 40-60 split bench
- Upholstery: semi-aniline leather

Exterior

- Active grille shutters- Exhaust: dual tip- Front bumper color: body-color
- Mirror color: body-color- Rear spoiler: roofline- Running boards
- Side door type: soft close - Daytime running lights: LED
- Exterior entry lights: approach lamps- Taillights: LED- Side mirror adjustments: power
- Side mirrors: driver side auto-dimming- Roof rails: chrome- Spare wheel type: steel
- Tire Pressure Monitoring System- Wheels: polished aluminum alloy with painted accents
- Front wipers: rain sensing- Laminated glass: acoustic- Liftgate window: manual flip-up
- Rear privacy glass- Rear wiper: intermittent- Solar-tinted glass- Window defogger: rear

Texas Autos Direct

texasautosdirect.com

(972) 369-4444

1525 Mariposa Drive

Mesquite, TX 75150

© 2024 AutoRevo - All rights reserved. - Powered by AutoRevo