

2016 Mercedes-Benz GLC GLC 300

View this car on our website at autosourcehawaii.com/7271919/ebrochure



Our Price **\$22,995**

Retail Value **\$24,995**

Specifications:

Year:	2016
VIN:	WDC0G4JB7GF008519
Make:	Mercedes-Benz
Stock:	GF008519
Model/Trim:	GLC GLC 300
Condition:	Pre-Owned
Body:	SUV
Exterior:	designo Magno Dakota Brown Matte
Engine:	2.0L Turbo I4 241hp 273ft. lbs.
Interior:	Black Leatherette
Transmission:	9-Speed Shiftable Automatic
Mileage:	71,697
Drivetrain:	Rear Wheel Drive
Economy:	City 22 / Highway 28

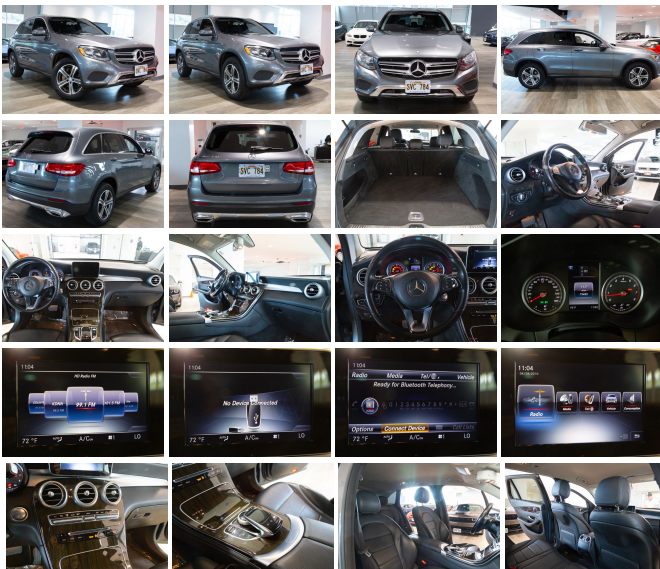
****Step into the Pinnacle of Sophistication with the 2016 Mercedes-Benz GLC 300****

Prepare to be captivated by the perfect blend of elegance and performance with the 2016 Mercedes-Benz GLC 300. With just 71,697 miles on the odometer, this luxury SUV is primed to deliver a driving experience that is nothing short of extraordinary. Its sleek body-color bumpers, black grille with chrome accents, and the roofline rear spoiler don't just add to its stunning appearance—they embody the very essence of aerodynamic efficiency.

As you slide into the cabin, the other leatherette interior welcomes you into a realm where comfort meets style. The meticulously crafted seats promise a journey that's as comfortable as it is stylish, ensuring every mile is as enjoyable as the last. The ambiance inside is complemented by the cutting-edge technology at your fingertips, including a 6-speaker audio system with 2 subwoofers, ensuring your favorite tunes are always delivered with crystal-clear quality.

Underneath the hood lies the heart of this automotive marvel—a robust 2.0L Turbo I4 engine producing an impressive 241hp and 273ft. lbs. of torque. Mated to a 9-speed shiftable automatic transmission, it offers a driving experience that is both smooth and responsive, ensuring every twist and turn is navigated with grace and precision.

The Mercedes-Benz GLC 300 isn't just about luxury—it's about smart connectivity too. With features like Bluetooth wireless data link, smart device app functions for horn and light operations, and hands-free phone capabilities, staying connected on the go has never been easier.



or safer. The mbrace satellite communications system keeps you in touch with a suite of services and support, ensuring peace of mind wherever your travels take you.

Safety is paramount, and this is evident with the inclusion of LED daytime running lights that not only enhance visibility but also add a touch of modern flair to the vehicle's exterior. The dual-tip exhaust not only hints at the vehicle's performance capabilities but also adds a sporty accent to its sophisticated profile.

And let's not forget the accolades. The 2016 Mercedes-Benz GLC 300 has been recognized by Edmunds as one of the Top Rated SUVs, praised by J.D. Power and Associates in their APEAL Study as a Top Model in its Segment, and celebrated by Kelley Blue Book as one of the 10 Best Luxury SUVs and for the Most Refined Luxury Brand. These awards aren't just titles—they are testaments to the vehicle's unparalleled quality and the exceptional experience it provides.

The 2016 Mercedes-Benz GLC 300 is not just a vehicle; it's a statement—a statement of class, of performance, and of uncompromising quality. It's an opportunity to own a piece of automotive excellence that continues to set the bar for luxury SUVs. Don't let this chance slip through your fingers. Embrace the allure of the Mercedes-Benz GLC 300 and elevate your driving experience to new heights. Visit us today and discover why this isn't just a car—it's your next adventure.

2016 Mercedes-Benz GLC GLC 300

Autosource Hawaii - (808) 597-8522 - View this car on our website at autosourcehawaii.com/7271919/ebrochure

Vehicle History Report : as Of 05/09/2024

CARFAX

Snapshot

2016 MERCEDES-BENZ GLC 300



No accidents or damage reported to CARFAX



18 Service history records



4 Previous owners



Types of owners: Lease, Personal



Last owned in Hawaii



71,697 Last reported odometer reading



FREE CARFAX Report

See the full CARFAX Report for additional information

*carfax Snapshot is a reflection of available information on the date the report was pulled. carfax is constantly being updated with new information and is subject to change at any time.

Our Location :



2016 Mercedes-Benz GLC GLC 300

Autosource Hawaii - (808) 597-8522 - View this car on our website at autosourcehawaii.com/7271919/ebrochure

Installed Options

Interior

- Air filtration: active charcoal- Front air conditioning: automatic climate control
- Front air conditioning zones: dual- Rear vents: second row- Center console trim: wood
- Dash trim: wood- Door trim: wood- Floor mat material: carpet- Floor mats: front
- Interior accents: wood-tone- Shift knob trim: leather- Steering wheel trim: leather
- Cargo area light- Cargo cover: retractable- Cruise control- Memorized settings: 3 driver
- Multi-function remote: keyless entry- Power outlet(s): 12V cargo area
- Power steering: variable/speed-proportional- Push-button start
- Steering wheel: power tilt and telescopic
- Universal remote transmitter: Homelink - garage door opener - Clock- Digital odometer
- External temperature display- Multi-function display- Trip odometer
- Driver seat power adjustments: 14- Front seat type: bucket- Rear seat folding: split
- Rear seat type: 40-20-40 split bench - Upholstery: leatherette

Exterior

- Exhaust: dual tip- Front bumper color: body-color- Grille color: black with chrome accents
- Mirror color: body-color- Rear spoiler: roofline- Daytime running lights: LED
- Exterior entry lights: puddle lamps- Taillights: LED- Side mirror adjustments: power
- Side mirrors: heated- Roof rails: chrome- Tire Pressure Monitoring System
- Wheels: aluminum alloy- Front wipers: rain sensing- Heated windshield washer jets
- Power windows- Rear privacy glass- Rear wiper: intermittent- Window defogger: rear

Autosource Hawaii

autosourcehawaii.com

(808) 597-8522

1488 Kapiolani Blvd

Honolulu, HI 96814

© 2024 AutoRevo - All rights reserved. - Powered by AutoRevo