



111 Fox Street, Louisville, MS 39339 (662) 779-1422

## 2022 Kia Soul LX CVT

**Our Price \$18,125**

View this vehicle on our website at [caritelouisville.com](https://caritelouisville.com)



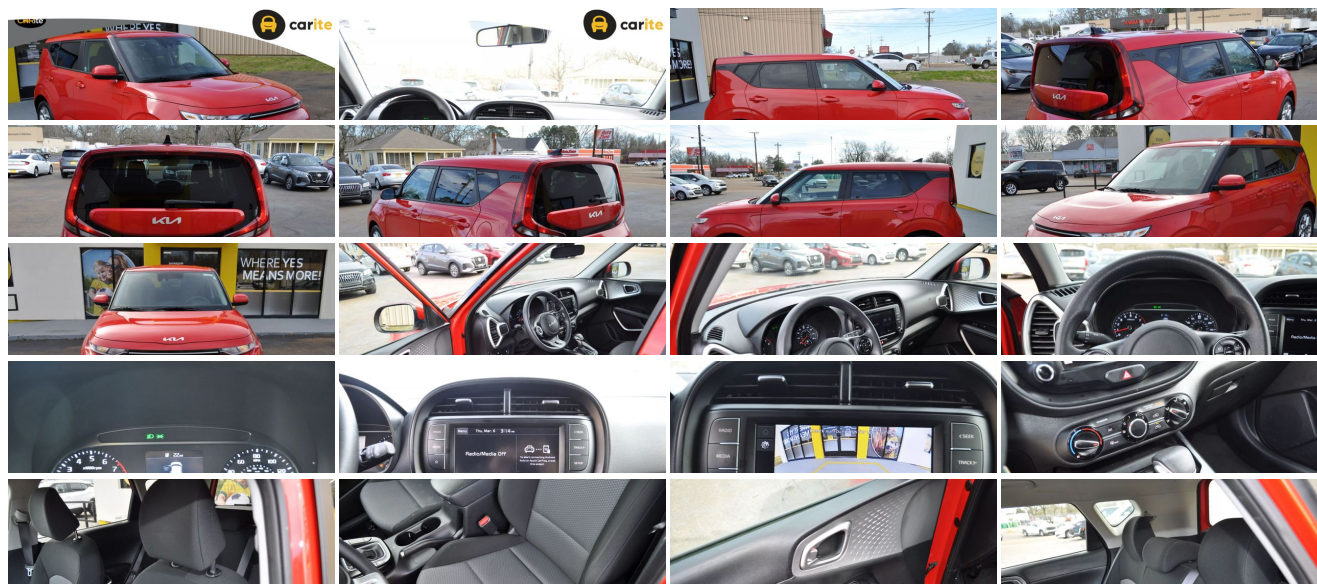
(662) 779-1422

111 Fox Street , Louisville, MS 39339

Photos

Details

Contact



## Specifications:

<b>Year:</b>	2022
<b>VIN:</b>	KNDJ23AU7N7177063
<b>Make:</b>	Kia
<b>Stock:</b>	32052
<b>Model/Trim:</b>	Soul LX CVT
<b>Condition:</b>	Pre-Owned
<b>Body:</b>	Wagon
<b>Exterior:</b>	Inferno Red
<b>Engine:</b>	2.0L I4 147hp 132ft. lbs.
<b>Interior:</b>	Gray
<b>Transmission:</b>	CVT
<b>Mileage:</b>	53,792
<b>Drivetrain:</b>	Front Wheel Drive
<b>Economy:</b>	City 28 / Highway 33

## Vehicle Description

- Eye-catching red exterior paired with a sleek gray interior for a stylish ride.
- Efficient 2.0L I4 engine with 147hp and CVT for smooth, fuel-efficient driving.
- Modern tech features like Bluetooth, Android Auto, and voice-operated messaging.
- Enhanced safety with Tire Pressure Monitoring System and safety reverse power windows.
- Comfort and convenience with solar-tinted glass, rear privacy glass, and speed-sensitive volume control.

Get ready to turn heads and capture hearts with the 2022 Kia Soul LX CVT, a vehicle that embodies style, efficiency, and modern technology. With its vibrant red exterior, this compact crossover is designed to stand out on the road, making every drive an event to remember. The sleek gray interior complements the striking exterior perfectly, offering a sophisticated and welcoming atmosphere for both driver and passengers.

Under the hood, the Kia Soul LX boasts a robust 2.0L I4 engine that delivers an impressive 147 horsepower and 132 ft. lbs. of torque. Paired with a Continuously Variable Transmission (CVT), this engine ensures a smooth and efficient driving experience, whether you're navigating city streets or cruising on the highway. The Soul's efficient powertrain not only enhances performance but also helps you save on fuel, making it an excellent choice for both daily commutes and weekend adventures.

The 2022 Kia Soul LX is packed with features designed to enhance your driving experience. Stay connected and entertained with the advanced wireless data link via Bluetooth, allowing you to make hands-free calls and stream your favorite music effortlessly. The integration of Android Auto ensures that you have seamless access to your smartphone's apps and navigation, making each journey more enjoyable and convenient. With six total speakers and speed-sensitive volume control, your audio experience is nothing short of exceptional.

Safety and convenience are at the forefront of the Kia Soul's design. The Tire Pressure Monitoring System keeps you informed and ensures optimal tire performance, while the power windows with safety reverse provide peace of mind for you and your passengers. The solar-tinted glass and rear privacy glass not only add a touch of elegance but also help protect you from the sun's harsh rays, keeping the interior cool and comfortable.

Practicality meets style with features like the rear wiper with washer, ensuring clear visibility during inclement weather, and the variable intermittent front wipers that adapt to changing conditions. The body-color front bumper seamlessly integrates with the vehicle's design, enhancing its sleek appearance.

For those unforeseen moments, the spare wheel type is steel, ensuring you're prepared for any situation. Plus, with a limited warranty available, you can drive with confidence knowing that Kia has your back.

In the 2022 Kia Soul LX CVT, every detail is crafted to provide an unparalleled driving experience. From its eye-catching design to its cutting-edge technology and thoughtful safety features, this vehicle is more than just a car—it's a statement. Embrace the road ahead with confidence and excitement, and let the Kia Soul be your perfect companion on every journey. Don't miss the opportunity to own a vehicle that truly stands out from the crowd.

## Vehicle History Report : as Of 07/02/2025

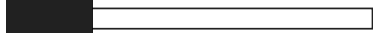


### Snapshot

2022 KIA SOUL LX



#### Accident reported: minor damage



MINOR



MODERATE

SEVERE

5 Service history records



2 Previous owners



Types of owners: Rental, Personal



48,849 Last reported odometer reading



**FREE CARFAX Report**

See the full CARFAX Report for additional information

\*carfax Snapshot is a reflection of available information on the date the report was pulled. carfax is constantly being updated with new information and is subject to change at any time.

## Installed Options

### Interior

- Rear vents: second row- Interior accents: aluminum- Cargo area light- Cruise control
- Power steering: variable/speed-proportional- Steering wheel: tilt and telescopic- Clock
- Digital odometer- External temperature display- Multi-function display- Trip odometer
- Front seat type: bucket- Rear seat folding: split- Rear seat type: 60-40 split bench

### Exterior

- Front bumper color: body-color- Spare wheel type: steel
- Tire Pressure Monitoring System- Front wipers: variable intermittent
- Power windows: safety reverse- Rear privacy glass- Rear wiper: with washer
- Solar-tinted glass- Window defogger: rear

CARite Louisville MS

CARite Louisville MS

View this car on our website at [caritelouisville.com/7271390](http://caritelouisville.com/7271390)

Website: [caritelouisville.com](http://caritelouisville.com)

Phone: (662) 779-1422

Map: [111 Fox Street, Louisville, MS 39339](#)

