

2013 GMC Sierra 2500HD Diesel 4x4 SLT

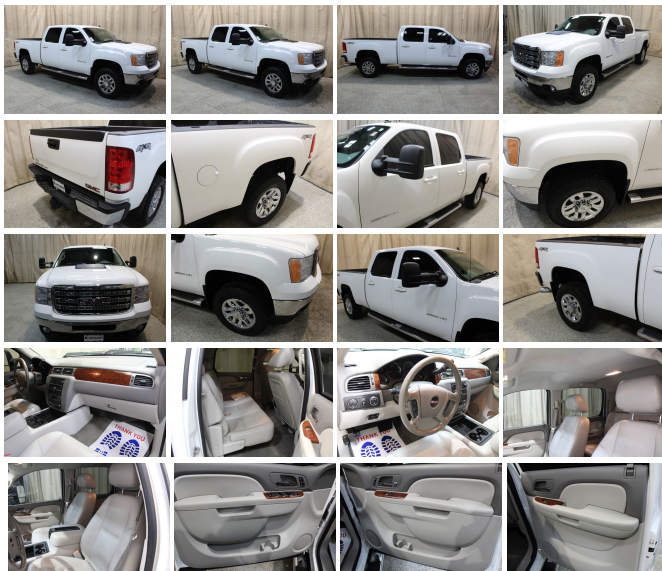
View this car on our website at autolandoutlets.com/7270806/ebrochure



Our Price **\$34,746**

Specifications:

Year:	2013
VIN:	1GT121E8XDF143432
Make:	GMC
Stock:	11591
Model/Trim:	Sierra 2500HD Diesel 4x4 SLT
Condition:	Pre-Owned
Body:	Pickup Truck
Exterior:	[50U] Summit White
Engine:	Duramax 6.6L Diesel Turbo V8 397hp 765ft. lbs.
Interior:	Gray Leather
Transmission:	Allison 1000 6-Speed Shifttable Automatic
Mileage:	165,073
Drivetrain:	4 Wheel Drive



Step into a world of unrelenting power and refined luxury with the 2013 GMC Sierra 2500HD Diesel 4x4 SLT, a titan of capability dressed in a sleek white exterior that glistens with promise. As you approach this formidable machine. its

...commanding presence is undeniable—a testament to the strength and reliability that awaits you.

Slide into the spacious cabin and be enveloped by sumptuous gray leather seats that cradle you in comfort as you grip the wheel, ready to conquer the road ahead. The interior is not just a space—it's a sanctuary, designed to provide you with an oasis of calm and control amidst your most demanding tasks.

At the heart of this beast lies the Duramax 6.6L Diesel Turbo V8 engine, a marvel of engineering that

produces an awe-inspiring 397 horsepower and a colossal 765 foot-pounds of torque. Paired with the precision of the Allison 1000 6-Speed Shifttable Automatic transmission, this Sierra 2500HD offers a driving experience that is both exhilarating and effortless. Whether you're towing heavy loads or navigating challenging terrain, this truck delivers performance that is as dependable as it is dynamic.

But it's not just about raw power; this Sierra 2500HD is adorned

with manufacturer options and packages that elevate your driving experience to new heights. Every feature has been meticulously crafted to enhance both functionality and aesthetics, ensuring that this truck is not just a tool, but a trusted partner for work and play.

The accolades speak for themselves, as the 2013 GMC Sierra 2500HD has garnered respect from industry experts and consumers alike. With honors such as Edmunds's Top 10 Least Expensive Trucks, Best Retained Value: Honorable Mention, and Top

vention, and Top Recommended Trucks, you can rest assured that this vehicle is a wise investment that will continue to deliver value for years to come. Furthermore, J.D. Power and Associates's recognition in the Initial Quality Study (IQS) for Top Models, and the Customer Service Index (CSI) Study for Highest Ranked Mass Market Brand, are testaments to the Sierra's exceptional quality and customer satisfaction.

Imagine the peace of mind as you navigate life's adventures, backed by a vehicle

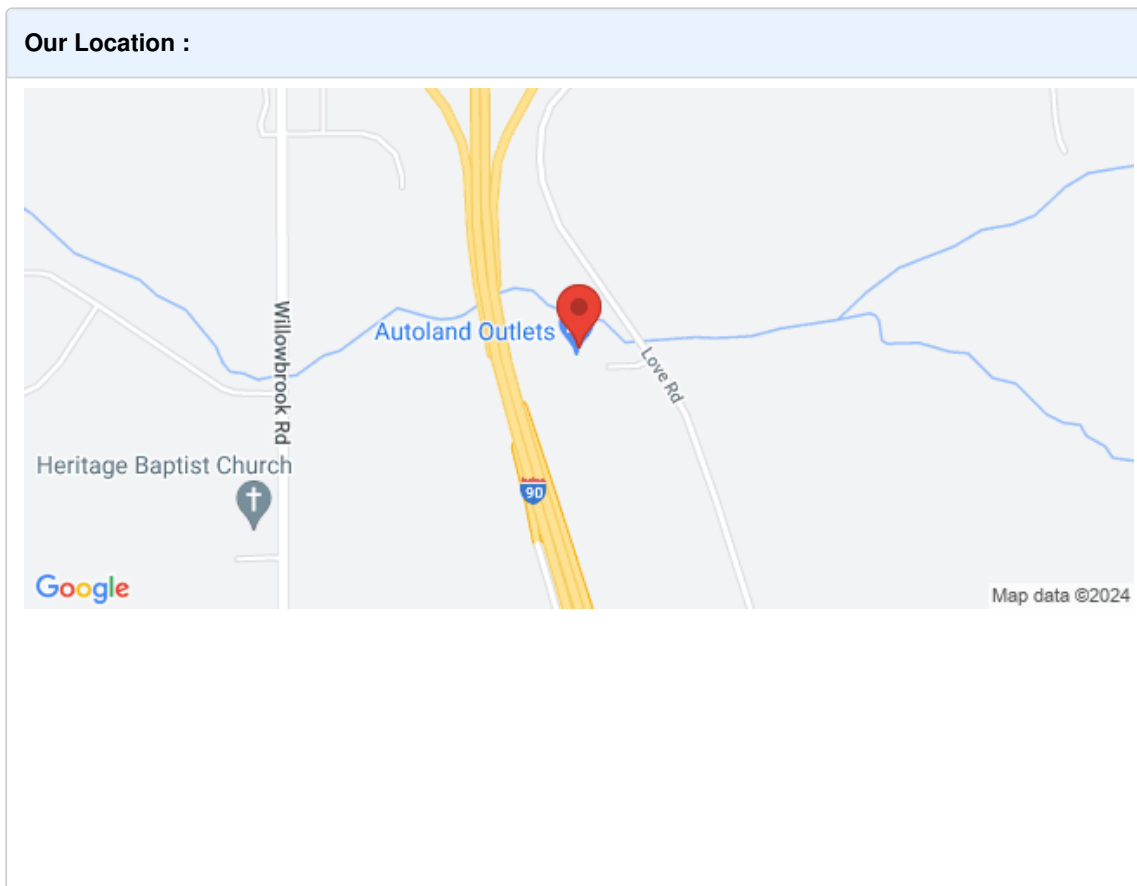
backed by a vehicle
that has not only
proven its worth but has
also been celebrated
for its excellence. This
2013 GMC Sierra
2500HD Diesel 4x4
SLT is not just a truck—
it's a statement of
strength, a symbol of
sophistication, and a
vessel of versatility.

Don't miss the
opportunity to own a
vehicle that embodies
the pinnacle of
performance and
prestige. The 2013
GMC Sierra 2500HD
Diesel 4x4 SLT is
waiting to take you on a
journey of power,
comfort, and
confidence. Act now,
and take the reins of a

truck that will not only meet your demands but exceed your expectations at every turn. Your adventure begins here.

2013 GMC Sierra 2500HD Diesel 4x4 SLT

Autoland Outlets - 877-319-6060 - View this car on our website at autolandoutlets.com/7270806/ebrochure



2013 GMC Sierra 2500HD Diesel 4x4 SLT

Autoland Outlets - 877-319-6060 - View this car on our website at autolandoutlets.com/7270806/ebrochure

Installed Options

Interior

- Air filtration- Front air conditioning: automatic climate control
- Front air conditioning zones: dual- Floor mat material: rubber/vinyl- Floor mats: front
- Steering wheel trim: leather- Cruise control- Memorized settings: driver seat
- Multi-function remote: keyless entry- Power outlet(s): two 12V front- Power steering
- Rearview mirror: auto-dimming- Remote engine start- Clock- Compass
- External temperature display- Multi-function display- Trip odometer- Driver seat: heated
- Driver seat power adjustments: 10- Front seat type: bucket- Passenger seat: heated
- Passenger seat power adjustments: 10- Rear seat folding: folds up
- Rear seat type: 60-40 split bench - Upholstery: leather-trimmed

Exterior

- Front bumper color: chrome- Pickup bed light- Daytime running lights
- Exterior entry lights: approach lamps- Front fog lights- Side mirror adjustments: power
- Side mirrors: driver side auto-dimming- Spare wheel type: steel
- Tire Pressure Monitoring System- Wheels: polished aluminum alloy
- Front wipers: variable intermittent- Power windows- Tinted glass- Window defogger: rear

Option Packages

Factory Installed Packages

Power Adjustable Camper Style Mirrors

Includes black outside heated power adjustable vertical camper manual-folding and extension mirrors, integrated turn signal indicator consisting of 50 square inch flat mirror surface positioned over a 20 square inch convex mirror surface with a common head and lower convex spotter glass. \$55

Skid Plate Package

Includes frame-mounted front underbody shield starting behind front bumper and running to first cross-member, protecting front underbody, oil pan, differential case and transfer case. \$150

SLT Convenience Package

Includes adjustable power pedals, universal home remote, locking tailgate, EZ-Lift tailgate, rear park assist and rear wheelhouse liner. \$725

Engine Block Heater

\$90

Federal Emissions Override

For vehicles ordered by dealers in Federal emission states with (YF5) or (NE1) emissions. Not required for vehicles being shipped to California, Connecticut, Maine, Maryland, Massachusetts, New Jersey, New York, Oregon, Pennsylvania, Rhode Island, Vermont or Washington.

GVWR of 10000 lbs.

Northeast Emissions

Includes Connecticut, Maine, Maryland, Massachusetts, New Jersey, New York, Oregon, Pennsylvania, Rhode Island, Vermont and Washington state requirements.

Trailer Wiring Provisions

Includes wiring provisions for camper, fifth wheel and gooseneck trailers and an additional 7-way wire harness routed to front of pickup box. \$35

Head Curtain Airbags

Includes head curtain side-impact airbags for front outboard seating positions with rollover sensor. \$395

Rear Vision Camera System

Includes rear vision camera and its images appear on navigation screen for units equipped with (UYS) AM/FM stereo with MP3 compatible CD/DVD player and navigation. For units not equipped with navigation systems images will appear within rearview mirror. \$450

Option Packages Total

\$1,900

autolandoutlets.com

877-319-6060

13156 Love Rd

Roscoe, IL 61073

© 2024 AutoRevo - All rights reserved. - Powered by AutoRevo