

2024 Ford Mustang Mach-E Premium

View this car on our website at askjorgelopez.com/7270210/ebrochure



Our Price **\$49,390**

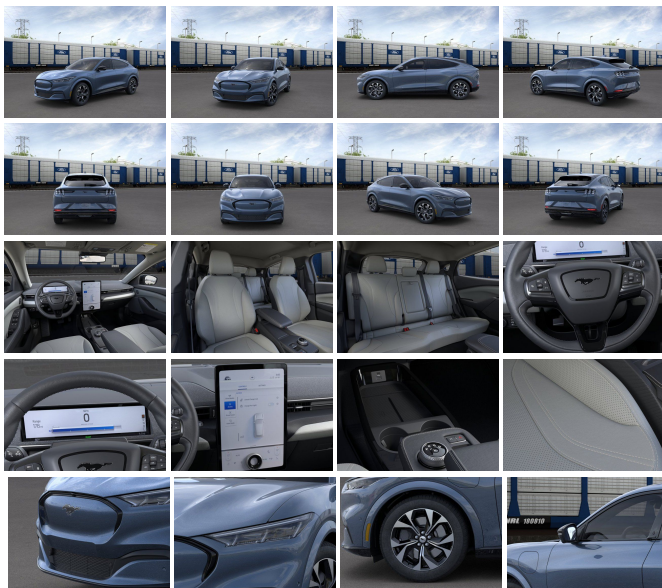
Specifications:

Year:	2024
VIN:	3FMTK3R46RMA05613
Make:	Ford
Stock:	MA05613
Model/Trim:	Mustang Mach-E Premium
Condition:	New
Body:	SUV
Exterior:	VAPOR BLUE METALLIC
Engine:	Electric 266hp 317ft. lbs.
Interior:	Gray Leatherette
Transmission:	1-Speed Direct-Drive Automatic
Mileage:	0
Drivetrain:	Rear Wheel Drive

"You'll have no regrets driving this impeccable 2024 Ford Mustang Mach-E. Tire Specific Low Tire Pressure Warning, Side Impact Beams, Right Side Camera, Power Rear Child Safety Locks, PCA with AEB and Intersection Assist.*Fully-Loaded with Additional Options*VAPOR BLUE METALLIC, TRANSMISSION: SINGLE SPEED (STD), MOBILE POWER CORD (120V/240V) -inc: switchable cord end to allow customer charge functionality w/120v (NEMA 5-15) up to 15 amps or 240v (NEMA 14-50) up to 32 amps, FRONT LICENSE PLATE BRACKET -inc: Standard in states requiring 2 license plates and optional to all others, EQUIPMENT GROUP 300A, ENGINE: PRIMARY EMOTOR (REAR) (RWD) -inc: 72kWh usable capacity standard range high-voltage battery (STD), Wheels: 19" Bright Machine-Face Aluminum -inc: black-painted pockets, Valet Function, Trunk/Hatch Auto-Latch, Trip Computer.* Stop By Today *Test drive this must-see, must-drive, must-own beauty today at Tomball Ford, 22702 Tomball Parkway, Tomball, TX 77375."

2024 Ford Mustang Mach-E Premium

Ask Jorge Lopez - 281-205-0352 - View this car on our website at askjorgelopez.com/7270210/ebrochure



Our Location :



2024 Ford Mustang Mach-E Premium

Ask Jorge Lopez - 281-205-0352 - View this car on our website at askjorgelopez.com/7270210/ebrochure

Installed Options

Interior

- Air filtration- Front air conditioning: automatic climate control
- Front air conditioning zones: dual- Rear vents: second row- Door sill trim: aluminum
- Door trim: leatherette- Floor mat material: carpet- Floor mats: front
- Heated steering wheel- Steering wheel trim: leatherette- Adaptive cruise control
- Adaptive stop and go cruise control: semi-automatic- Ambient lighting: color
- Autonomous lane guidance: lane centering- Cargo area light- Cargo cover: hard
- Keypad entry- Memorized settings: 3 driver- Power outlet(s): 12V cargo area
- Power steering- Push-button start- Rearview mirror: auto-dimming- Remote engine start
- Steering wheel: tilt and telescopic
- Universal remote transmitter: Homelink - garage door opener
- Wireless charging station: front- Clock- Compass- Customizable instrument cluster
- Digital odometer- External temperature display- Instrument cluster screen size: 10.2 in.
- Multi-function display- Trip odometer- Driver seat: heated
- Driver seat power adjustments: 8- Front seat type: bucket- Passenger seat: heated
- Passenger seat power adjustments: 8- Rear seat folding: split
- Rear seat type: 60-40 split bench - Upholstery: leatherette

Exterior

- Active grille shutters- Front bumper color: body-color- Rear spoiler: roofline
- Daytime running lights: LED- Exterior entry lights: approach lamps- Taillights: LED
- Side mirror adjustments: power- Side mirrors: heated- Moonroof / Sunroof: panoramic
- Spare tire kit: inflator kit- Tire Pressure Monitoring System
- Wheels: aluminum alloy with painted accents- Front wipers: rain sensing
- Heated windshield wiper rests- Laminated glass: acoustic- Rear wiper: auto-on in reverse
- Window defogger: rear

Ask Jorge Lopez
askjorgelopez.com
281-205-0352

22702 Tomball Parkway
Tomball, TX 77375

© 2024 AutoRevo - All rights reserved. - Powered by [AutoRevo](#)