

2013 GMC Sierra 2500HD 4x4 SLE

View this car on our website at freedommotorsofabilene.com/7266299/ebrochure



Our Price **\$32,990**

Specifications:

Year:	2013
VIN:	1GT120C80DF134610
Make:	GMC
Stock:	5719A
Model/Trim:	Sierra 2500HD 4x4 SLE
Condition:	Pre-Owned
Body:	Pickup Truck
Exterior:	[50U] Summit White
Engine:	Duramax 6.6L Diesel Turbo V8 397hp 765ft. lbs.
Interior:	Dark Titanium/Light Titanium Cloth
Transmission:	Allison 1000 6-Speed Shiftable Automatic
Mileage:	92,612
Drivetrain:	4 Wheel Drive

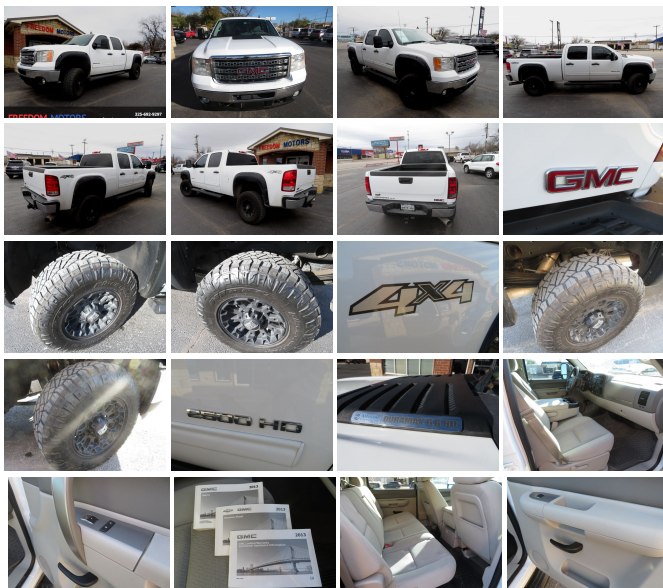
Prepare yourself to command the road with the formidable presence and robust capability of the "One Owner" 2013 GMC Sierra 2500HD SLE 4x4 Duramax 6.6 HD Diesel. A true testament to power and reliability, this truck is not just a vehicle; it's a steadfast partner in tackling the toughest of jobs and the most adventurous of journeys.

Gleaming in its radiant white exterior, this Sierra 2500HD boasts a mere 91,829 miles on the odometer, signaling a life of service that's just beginning. The Gray cloth interior welcomes you into a cabin that's both functional and comfortable, providing a stark, handsome contrast that's as stylish as it is durable.

At the heart of this mechanical marvel lies the powerhouse Duramax 6.6L Diesel Turbo V8 engine, delivering an earth-moving 397 horsepower and an astonishing 765 ft. lbs. of torque. Mated to the renowned Allison 1000 6-Speed Shiftable Automatic transmission, this truck offers a seamless and responsive driving experience, whether you're navigating city streets or hauling heavy loads across rugged terrain.

The Sierra 2500HD SLE doesn't just work hard; it's smart, too. Equipped with a suite of manufacturer options and packages, including the practical Spray-On Bed Liner and the Theft Deterrent Wheel, this truck is designed to protect both your cargo and your peace of mind. The 6-Way Power Driver Seat Adjuster ensures you'll find the perfect driving position, while the Black Rubberized Vinyl Floor Covering stands up to the rigors of daily use.

The SLE Preferred Package elevates your driving experience with luxurious touches like aluminum alloy wheels that catch the eye and a leather-trimmed steering wheel that feels just right in your hands. The electronic hi-lo 4WD selector empowers you to tackle any terrain



confidently, while the part-time 4WD system provides the traction you need, when you need it.

Technology and entertainment are at your fingertips with cruise control for those long hauls, and a 6-speaker audio system with SiriusXM satellite radio to keep you company. And with cloth upholstery that's both comfortable and easy to maintain, this truck proves that practicality can coexist with comfort.

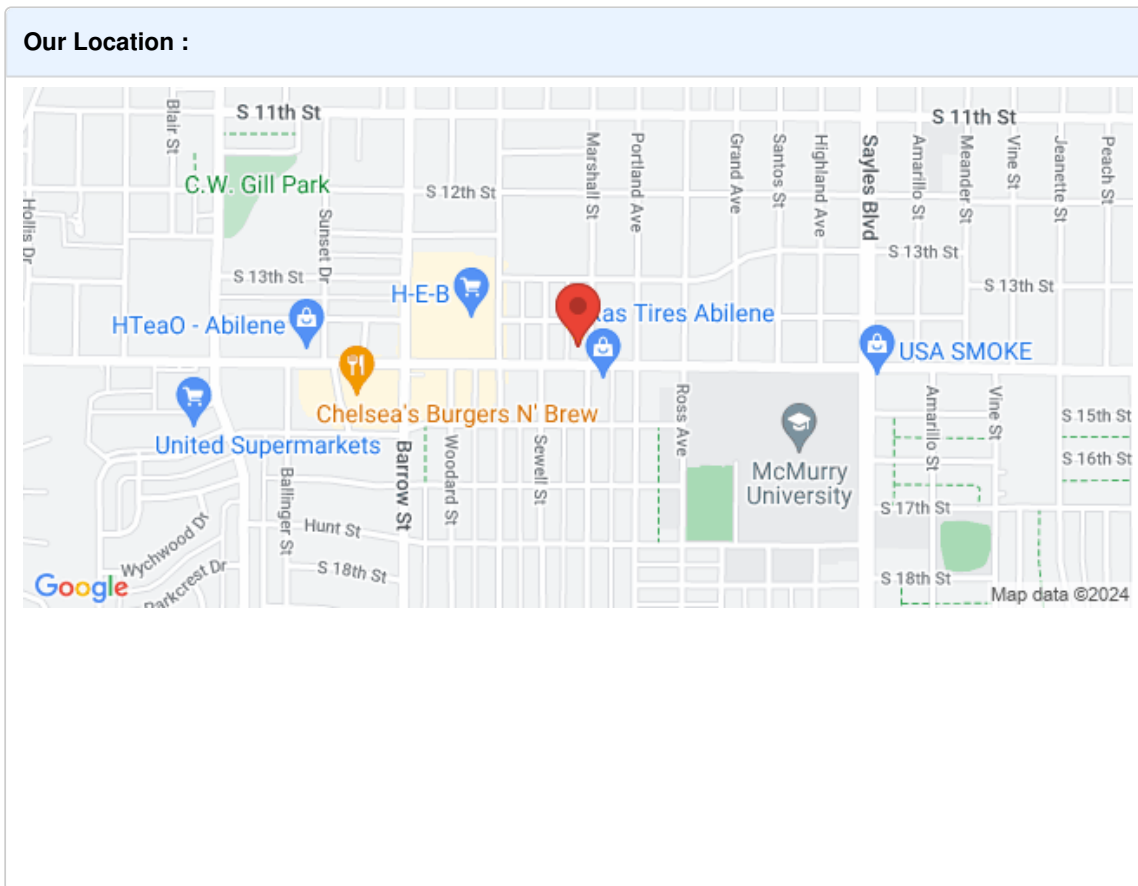
Safety is paramount, and this Sierra 2500HD SLE delivers with 4-wheel ABS and power windows, ensuring that you and your passengers are protected and in control at all times.

Not only is this truck a champion of the road, but it's also an award-winning vehicle, recognized by Edmunds for its cost-effectiveness, value retention, and overall recommendation. Additionally, the J.D. Power and Associates accolades for Initial Quality Study and Customer Service Index Study underline GMC's commitment to excellence and customer satisfaction.

Don't miss the opportunity to own this embodiment of strength and sophistication. The 2013 GMC Sierra 2500HD SLE is more than just a truck; it's a symbol of American engineering and a reliable companion that stands ready to fulfill your towing, hauling, and driving needs with unmatched prowess. Come see for yourself why this Sierra is the perfect addition to your work fleet or personal garage – your next adventure awaits.

2013 GMC Sierra 2500HD 4x4 SLE

Freedom Motors - (325) 692-9297 - View this car on our website at freedommotorsofabilene.com/7266299/ebrochure



2013 GMC Sierra 2500HD 4x4 SLE

Freedom Motors - (325) 692-9297 - View this car on our website at freedommotorsofabilene.com/7266299/ebrochure

Installed Options

Interior

- Air filtration- Front air conditioning- Floor mat material: rubber/vinyl- Floor mats: front
- Steering wheel trim: leather- Cruise control- Multi-function remote: keyless entry
- Power outlet(s): two 12V front- Power steering- Remote engine start prewiring- Clock
- Compass- External temperature display- Multi-function display- Trip odometer
- Front seat type: 40-20-40 split bench - Rear seat folding: folds up
- Rear seat type: 60-40 split bench - Upholstery: cloth

Exterior

- Front bumper color: chrome- Pickup bed light- Daytime running lights
- Exterior entry lights: approach lamps- Side mirrors: heated- Spare wheel type: steel
- Tire Pressure Monitoring System- Wheels: aluminum alloy
- Front wipers: variable intermittent- Power windows- Tinted glass

Option Packages

Factory Installed Packages

Spray-On Bed Liner	\$475
Theft Deterrent Wheel Security system that sets off the vehicle alarm system if the vehicle is jacked up or towed. Limited Promotion Option.	\$220
6-Way Power Driver Seat Adjuster	\$295
Black Rubberized Vinyl Floor Covering	
SLE Preferred Package Includes steering wheel controls, dual-zone automatic air conditioning, 6-way power driver seat adjuster, Bluetooth for phone, AM/FM stereo, in-dash single disc CD Player, MP3 playback capability, fog lamps, locking tailgate and EZ-Lift tailgate.	\$1,015
Option Packages Total	\$2,005

FREEDOM MOTORS of Abilene

freedommotorsofabilene.com

(325) 692-9297

2702 South 14th

Abilene, Texas 79605

© 2024 AutoRevo - All rights reserved. - Powered by AutoRevo