

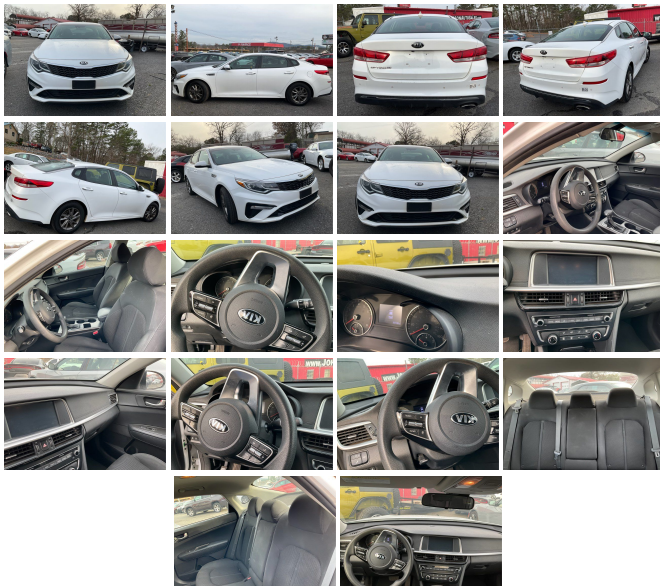
2020 Kia Optima LX

View this car on our website at johngibsonautosales.com/7264767/ebrochure



Specifications:

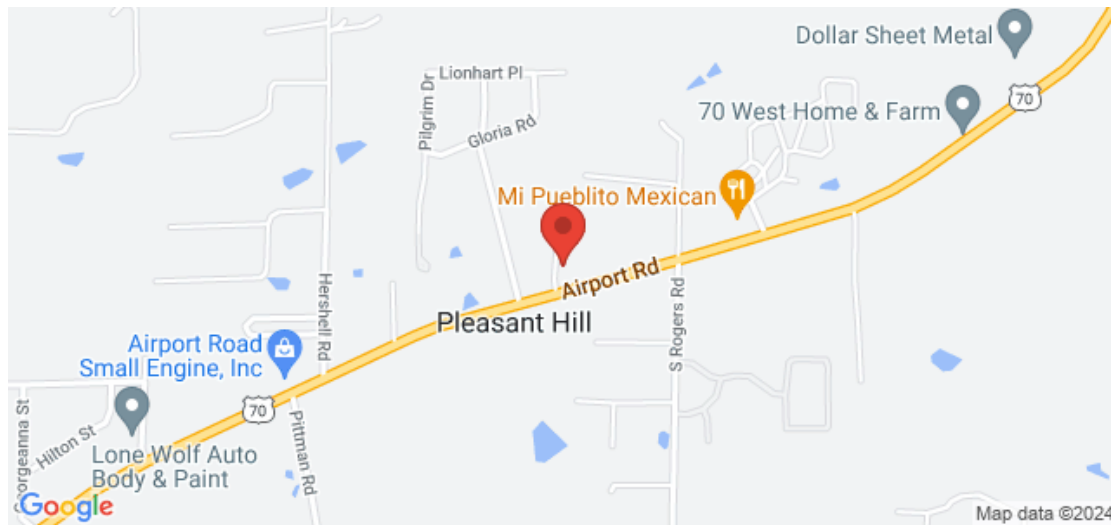
| | |
|----------------------|-----------------------------|
| Year: | 2020 |
| VIN: | 5XXGT4L38LG393008 |
| Make: | Kia |
| Stock: | 50579 |
| Model/Trim: | Optima LX |
| Condition: | Pre-Owned |
| Body: | Sedan |
| Exterior: | WHITE |
| Engine: | 2.4L I4 185hp 178ft. lbs. |
| Interior: | N/A |
| Transmission: | 6-Speed Shiftable Automatic |
| Mileage: | 50,142 |
| Drivetrain: | Front Wheel Drive |
| Economy: | City 24 / Highway 32 |



2020 Kia Optima LX

John Gibson Auto Sales - (501) 767-8455 - View this car on our website at johngibsonautosales.com/7264767/ebrochure

Our Location :



2020 Kia Optima LX

John Gibson Auto Sales - (501) 767-8455 - View this car on our website at john gibsonautosales.com/7264767/ebrochure

Installed Options

Interior

- Air filtration- Front air conditioning- Cargo area light- Cruise control
- Power outlet(s): 12V front- Power steering- Steering wheel: tilt and telescopic- Clock
- Digital odometer- External temperature display- Multi-function display- Trip odometer
- Front seat type: bucket - Rear seat folding: split- Rear seat type: 60-40 split bench

Exterior

- Door handle color: chrome- Front bumper color: body-color- Daytime running lights: LED
- Side mirrors: heated- Spare tire kit: inflator kit- Tire Pressure Monitoring System
- Front wipers: variable intermittent- Power windows: safety reverse- Solar-tinted glass
- Window defogger: rear

It is the customer's sole responsibility to verify the existence and condition of any equipment listed. Neither the dealership nor AutoRevo is responsible for misprints on prices or equipment. It is the customer's sole responsibility to verify the accuracy of the prices with the dealer. Pricing subject to change without notice.

John Gibson Auto Sales
john gibsonautosales.com
(501) 767-8455

1425 Airport Rd
Hot Springs, Arkansas 71913

© 2024 AutoRevo - All rights reserved. - Powered by AutoRevo