

2024 Jeep Wrangler Rubicon 392 4X4 HARD TOP,BUMPERS,LED'S,4PLAY WHLS

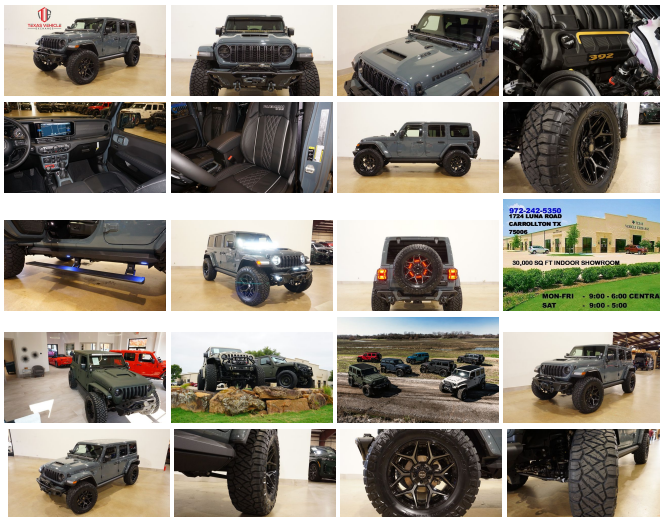
View this car on our website at tveauto.com/7263071/ebrochure



Our Price **\$140,900**

Specifications:

| | |
|---------------|---|
| Year: | 2024 |
| VIN: | 1C4RJXSJ2RW101814 |
| Make: | Jeep |
| Stock: | 101814 |
| Model/Trim: | Wrangler Rubicon 392 4X4 HARD TOP,BUMPERS,LED'S,4PLAY WHLS |
| Condition: | Pre-Owned |
| Body: | SUV |
| Exterior: | [PDS] Anvil Clear Coat |
| Engine: | HEMI 6.4L V8 470hp 470ft. lbs. |
| Interior: | Black Leather |
| Transmission: | 8-Speed Shiftable Automatic |
| Mileage: | 44 |
| Drivetrain: | 4 Wheel Drive |
| Economy: | City 13 / Highway 16 |



NATION WIDE FINANCING

SUBMIT CREDIT APP [WWW.TVEAUTO.COM](https://www.tveauto.com)

OR CALL 972-242-5350

"ANVIL CLEAR COAT EDITION"

CUSTOM BUILT 2024 JEEP WRANGLER JL
UNLIMITED RUBICON 4X4 WITH 27X
PACKAGE

UPGRADES INCLUDE:

- * ANVIL CLEAR COAT
- * 6.4L V8 SRT HEMI ENGINE
- * PAINTED TO MATCH 3 PIECE HARD TOP
- * CUSTOM ALEA BLACK LEATHER WITH SILVER STITCHING
- * INTERIOR PIECES CUSTOM PAINTED ANVIL
- * FACTORY REMOTE START
- * REMOTE PROXIMITY KEYLESS ENTRY
- * COLD WEATHER GROUP
- * LED LIGHTING GROUP
- * SAFETY GROUP
- * ADVANCED SAFETY GROUP
- * FORWARD FACING TRAIL CAM
- * FACTORY 12.3 INCH TOUCH SCREEN NAVIGATION WITH HD AM/FM/SIRIUS STEREO & ALPINE PREMIUM AUDIO SYSTEM
- * FACTORY BACK-UP CAMERA
- * U-CONNECT
- * SMITTYBILT APOLLO JL FRONT BUMPER WITH 2 MINI LED LIGHT BARS & LED FOGLIGHTS
- * FRONT D-RINGS & ISOLATORS (ANVIL)
- * SMITTYBILT NEW GEN 3 "X20" 10,000 LB WATERPROOF AND WIRELESS CONTROL WINCH WITH SYNTHETIC ROPE
- * FACTOR 55 PROLINK (BLACK)
- * FACTORY LED HEADLIGHTS
- * RUGGED RIDGE BLACK HEADLIGHT GUARDS
- * FACTORY HOOD WITH AIR INTAKE SCOOP
- * PAINTED TO MATCH FENDER FLARES
- * TERAFLX FALCON SERIES 3 SHOCKS &

RESERVOIRS

- * TERAFLEX FALCON STABILIZER KIT
- * MOPAR AUXILIARY SWITCH BANK KIT
- * 50" LED LIGHT BAR AND 4 RIGID INDUSTRIES DUALY D2 LED PILLAR LIGHTS (LIGHT BRACKETS PAINTED TO MATCH)
- * AMP RESEARCH POWERSTEP XL RUNNING BOARDS WITH LED LIGHT KIT
- * EVOLUTION 2 BLACK LED TAIL LIGHTS
- * RUGGED RIDGE BLACK TAIL LIGHT GUARDS
- * RUGGED RIDGE SPARTACUS HD HINGE KIT
- * RUGGED RIDGE LED THIRD BRAKE LIGHT RING
- * SMITTYBILT APOLLO JL REAR BUMPER WITH REAR PARK DISTANCE SENSORS
- * REAR D-RINGS & ISOLATORS (ANVIL)
- * ALL WEATHER FLOOR MATS
- * TAZER JL PROGRAMMER WITH SPEEDOMETER CALIBRATION
- * 20" 4PLAY FORGED GEN3 4P06 WHEELS
- * BRAND NEW NITTO RIDGE GRAPPLER 37X13.50R/20 TIRES

WE BUILD EVERY JEEP WITH PRIDE! DO NOT HESITATE TO CALL US WITH THIS JEEP BUILD. WE CAN MAKE CHANGES TO THIS JEEP BUILD OR CUSTOM BUILD ANY JEEP TO YOUR PREFERENCE. GIVE US A CALL @ 972-242-5350 OR STOP BY FOR A TEST DRIVE. 1724 LUNA RD IN CARROLLTON - 2 MILES NORTH OF 635.

Vehicle History Report : as Of 04/27/2024



Snapshot

2024 JEEP WRANGLER RUBICON 392



No accidents or damage reported to CARFAX



1 Service history record



CARFAX 1-Owner vehicle



Personal vehicle



Last owned in Texas



10 Last reported odometer reading



FREE CARFAX Report

See the full CARFAX Report for additional information

*carfax Snapshot is a reflection of available information on the date the report was pulled. carfax is constantly being updated with new information and is subject to change at any time.

Our Location :



2024 Jeep Wrangler Rubicon 392 4X4 HARD TOP,BUMPERS,LED'S,4PLAY WHLS
Texas Vehicle Exchange - 972-242-5350 - View this car on our website at veauto.com/7263071/ebrochure

Installed Options

Interior

- Air filtration- Front air conditioning: automatic climate control- Rear vents: second row
- Floor mat material: carpet- Floor mats: front- Heated steering wheel
- Parking brake trim: leather- Shift knob trim: leather- Adaptive cruise control
- Adaptive stop and go cruise control: semi-automatic- Ambient lighting- Cargo area light
- Footwell lights- Power outlet(s): 115V rear- Power steering: variable/speed-proportional
- Push-button start- Rearview mirror: auto-dimming- Remote engine start
- Steering wheel: tilt and telescopic- Tool kit
- Universal remote transmitter: Homelink - garage door opener - Clock- Compass
- Customizable instrument cluster- Digital odometer- External temperature display
- Instrument cluster screen size: 7 in.- Multi-function display- Trip odometer
- Driver seat: heated- Driver seat power adjustments: 12- Front seat type: bucket
- Passenger seat: heated- Passenger seat power adjustments: 12- Rear seat folding: split
- Rear seat type: 60-40 split bench - Upholstery: leather-trimmed

Exterior

- Hood scoop- Running boards- Daytime running lights: LED
- Exterior entry lights: approach lamps- Front fog lights: LED- Taillights: LED
- Side mirrors: heated- Removable roof: hard top- Spare tire size: full-size matching
- Spare wheel type: aluminum- Tire Pressure Monitoring System
- Wheels: painted aluminum alloy- Front wipers: variable intermittent
- Laminated glass: acoustic- Liftgate window: manual flip-up
- Power windows: safety reverse- Rear wiper: intermittent- Solar-tinted glass: front
- Tinted glass: windshield- Window defogger: rear

Option Packages

Factory Installed Packages

| | |
|------------------------|-------|
| Anvil Clear Coat Paint | \$595 |
|------------------------|-------|

| |
|--|
| Quick Order Package 27X |
| Includes vehicle with standard equipment, 6.4L V8 HEMI engine, and 8-speed automatic transmission. |

| | |
|-----------------------|-------|
| Option Packages Total | \$595 |
|-----------------------|-------|

Texas Vehicle Exchange

tveauto.com

972-242-5350

1724 Luna Road

Carrollton, TX 75006

© 2024 AutoRevo - All rights reserved. - Powered by AutoRevo