

2018 Land Rover Discovery Sport HSE

View this car on our website at metromotorsllc.com/7261282/ebrochure



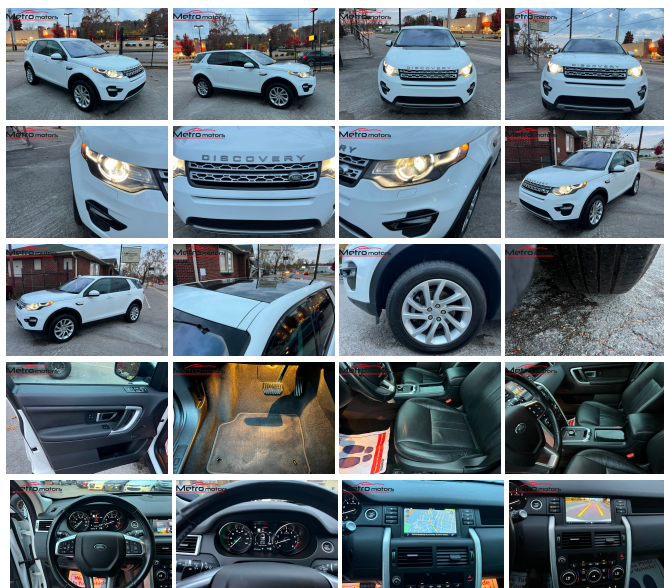
Our Low Price **\$18,500**

N.A.D.A Retail Value **\$22,950**

Specifications:

Year:	2018
VIN:	SALCR2RX7JH750635
Make:	Land Rover
Stock:	27S9P233
Model/Trim:	Discovery Sport HSE
Condition:	Pre-Owned
Body:	SUV
Exterior:	[1AA] Fuji White
Engine:	Ingenium 2.0L Turbo I4 237hp 251ft. lbs.
Interior:	Ebony Leather
Transmission:	9-Speed Shifttable Automatic
Mileage:	77,441
Drivetrain:	All Wheel Drive
Economy:	City 21 / Highway 25

In mint condition, runs great, loaded AWD-Inop, other than that perfect. priced \$3000 below retail price



2018 Land Rover Discovery Sport HSE

Metro Motors LLC - 865-851-7491 - View this car on our website at metromotorsllc.com/7261282/ebrochure

Our Location :



2018 Land Rover Discovery Sport HSE

Metro Motors LLC - 865-851-7491 - View this car on our website at metromotorsllc.com/7261282/ebrochure

Installed Options

Interior

- Air filtration- Front air conditioning: automatic climate control
- Front air conditioning zones: dual- Humidity/dewpoint sensors- Rear vents: second row
- Center console trim: aluminum- Dash trim: leatherette- Door trim: leatherette
- Floor mat material: carpet- Floor mats: front- Interior accents: aluminum
- Shift knob trim: aluminum- Steering wheel trim: leather- Ambient lighting
- Cargo area light- Cruise control- Footwell lights- Memorized settings: 3 driver
- Power outlet(s): 12V cargo area- Power steering: variable/speed-proportional
- Push-button start- Rearview mirror: auto-dimming- Steering wheel: tilt and telescopic
- Universal remote transmitter: Homelink - garage door opener - Clock- Digital odometer
- External temperature display- Multi-function display- Trip odometer
- Driver seat power adjustments: 12- Front seat type: bucket
- Passenger seat power adjustments: 12- Rear seat folding: split
- Rear seat type: 60-40 split bench - Upholstery: leather

Exterior

- Exhaust: dual tip- Front bumper color: body-color- Mirror color: body-color
- Rear spoiler: roofline- Daytime running lights: LED- Exterior entry lights: approach lamps
- Front fog lights- Headlight cleaners- Rear fog lights- Taillights: LED
- Side mirror adjustments: power- Side mirrors: auto-dimming
- Moonroof / Sunroof: panoramic- Spare wheel type: steel
- Tire Pressure Monitoring System- Wheels: aluminum alloy- Front wipers: rain sensing
- Laminated glass: infrared-reflecting- Rear privacy glass- Rear wiper: auto-on in reverse
- Solar-tinted glass- Window defogger: rear

Option Packages

Factory Installed Packages

Audio Upgrade Package

Includes 380W Meridian audio system with 11 speakers including subwoofer, SiriusXM satellite radio, and HD radio. **\$820**

InControl Apps

Includes InControl Apps functionality that enables the use of optimized smartphone applications through the vehicle's touch-screen infotainment system interface. **\$55**

InControl Wi-Fi

Includes in-car 3G Wi-Fi hotspot, enabling passengers to connect up to 8 devices to the internet. **\$370**

SiriusXM Satellite Radio and HD Radio

\$765

Yulong White Metallic Paint

\$610

Discovery Sport Tow Pack - 5 Seat

Includes towbar receiver armature and towing electrics. **\$997**

Adaptive Cruise Control w/ Queue Assist and Intelligent Emergency Braking

Includes adaptive cruise control with queue assist (which extends the ACC function to allow the vehicle to come to a stop, when it reaches a traffic queue) and intelligent emergency braking (which uses radar to detect vehicles travelling in the same direction and automatically reduces impact speed if it calculates that a frontal collision is unavoidable). **\$1,125**

Blind Spot Monitor and Reverse Traffic Detection

\$510

Option Packages Total

\$5,252

We Describe Vehicles To The Best Of Our Knowledge, We Also Price Accordingly, using N.A.D.A, We feel That Our Priced Are Unmatched....

Metro Motors LLC

metromotorsllc.com

865-851-7491

3820 N. Broadway

Knoxville , Tennessee 37917

© 2024 AutoRevo - All rights reserved. - Powered by AutoRevo