

2019 Volvo XC90 T8 eAWD R-Design

Andrey Petukhov 3235403249

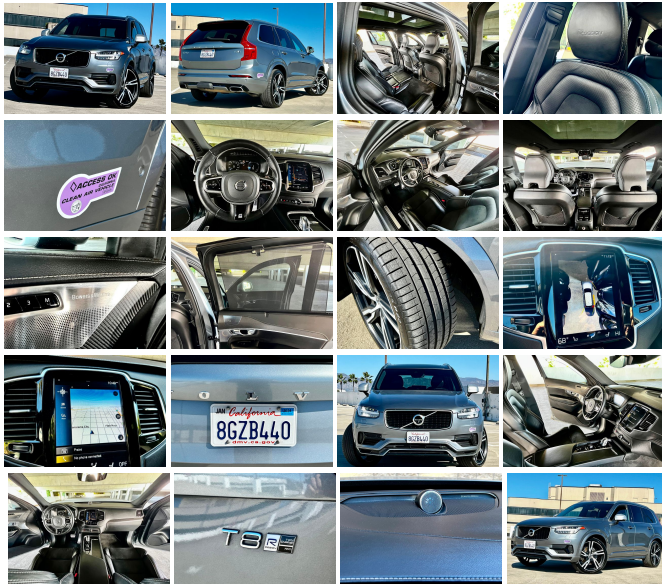
View this car on our website at socalautogroup.com/7261095/ebrochure



Our Price **\$30,950**

Specifications:

Year:	2019
VIN:	YV4BR0CM2K1462423
Make:	Volvo
Stock:	I-2423 HYBRID R DESIGN
Model/Trim:	XC90 T8 eAWD R-Design
Condition:	Pre-Owned
Body:	SUV
Exterior:	[714] Osmium Grey Metallic
Engine:	2.0L Plug-in Hybrid Twincharged I4 400hp 472ft. lbs.
Interior:	Black Leather
Transmission:	8-Speed Shifttable Automatic
Mileage:	96,635
Drivetrain:	All Wheel Drive
Economy:	City 59 / Highway 56



**ONE OWNER/CLEAN TITLE/CLEAN CARFAX REPORT CALIFORNIA CAR WITH SERVICE RECORDS! ALL SERVICES DONE AT VOLVO DEALER! CURRENT 2024 REGISTRATION AND SMOG CHECK!*

**FULLY LOADED WITH: PLUG IN HYBRID, 400HP 4 CYL ENGINE AND ELECTRIC MOTOR, AUTOPILOT ASSISTANCE, CARPOOL STICKERS, BOWERS AND WILKINS PREMIUM SOUND, CELL PHONE INTEGRATION, NAVIGATION SYSTEM, REARVIEW AND TOP VIEW CAMERAS, FULL AUTOPILOT CRUISE CONTROL, COMPLETE PREMIUM PERFORATED LEATHER/SWADE INTERIOR, KEYLESS ENTRY/KEYLESS GO, BLUETOOTH, REAR SHADES, CARBON FIBER INLAYS, TOW PKG, ROOF RACKS, PREMIUM 22 INCH OEM WHEELS, HID ADAPTIVE LIGHTS, XM/AUX/USB/BT/MP3, HEATED SEATS AND STEERING WHEEL, AND MUCH MORE!*

**CALL US FOR APPOINTMENT! WE FINANCE! WARRANTIES AVAILABLE!*

Our Location :



2019 Volvo XC90 T8 eAWD R-Design

SoCal Auto Group - 3235403249 - View this car on our website at socalautogroup.com/7261095/ebrochure

Installed Options

Interior

- Air filtration: active charcoal- Front air conditioning: automatic climate control
- Front air conditioning zones: dual- Humidity/dewpoint sensors
- Rear air conditioning: automatic climate control- Rear air conditioning zones: dual
- Center console trim: alloy- Dash trim: aluminum- Door sill trim: illuminated scuff plate
- Door trim: leather- Floor mat material: carpet- Floor mats: front
- Foot pedal trim: aluminum- Interior accents: aluminum- Shift knob trim: crystal glass
- Steering wheel trim: alloy- Adaptive cruise control
- Adaptive stop and go cruise control: semi-automatic- Ambient lighting
- Autonomous lane guidance: lane centering- Capless fuel filler system- Cargo area light
- Memorized settings: 3 driver- Power outlet(s): 12V cargo area
- Power steering: variable/speed-proportional- Push-button start
- Rearview mirror: auto-dimming- Steering wheel: tilt and telescopic
- Sunshade: side window- Universal remote transmitter: Homelink - garage door opener
- Clock- Compass- Customizable instrument cluster- Digital odometer
- External temperature display- Instrument cluster screen size: 12.3 in.
- Multi-function display- Trip odometer- Driver seat: heated
- Driver seat power adjustments: 10- Front seat type: sport bucket
- Passenger seat: heated- Passenger seat power adjustments: 10- Rear seat folding: flat
- Rear seat type: 40-20-40 split bench - Third row seat folding: fold flat into floor
- Third row seat type: 50-50 split bench - Upholstery: premium leather
- Upholstery accents: contrast stitching

Exterior

- Exhaust: dual tip- Front bumper color: body-color- Rear spoiler: roofline
- Daytime running lights: LED- Exterior entry lights: approach lamps- Taillights: LED
- Side mirror adjustments: power- Side mirrors: auto-dimming
- Moonroof / Sunroof wind deflector- Roof rails: aluminum- Spare tire kit: inflator kit
- Tire Pressure Monitoring System- Wheels: painted aluminum alloy
- Front wipers: rain sensing- Heated windshield washer jets- Laminated glass: acoustic
- Power windows: safety reverse- Rear privacy glass- Rear wiper: variable intermittent
- Window defogger: rear

Option Packages

Factory Installed Packages

Bowers and Wilkins Premium Sound System Includes Bowers and Wilkins premium 1410-watt sound system, 18 speakers and separate subwoofer, 9-inch center touch screen display, and steering wheel controls.	\$3,200
22 Inch 5-Double Spoke and Matte Black Diamond Cut Alloy Wheels Includes 22 x 9.0-inch 5-double spoke matte black diamond cut alloy wheels with 275/35 Pirelli summer tires.	\$1,100
Running Boards	\$2,225
Carbon Fiber Interior Inlays	\$800
Advanced Package Includes park assist pilot and front park assist, full LED headlights with active bending lights, active high beams, LED daytime running lamps, headlight high pressure cleaning, 360-degree surround view camera with visual park assist, and graphical head-up display.	\$2,500
Heated Rear Seats and Heated Steering Wheel	\$750
Trailer Hitch Includes detachable hitch for towing and transporting other loads.	\$1,025
Option Packages Total	\$11,600

Disclaimer: The information on vehicles provided by SOCAL AUTO GROUP is provided on an "AS-IS" and "AS AVAILABLE" basis and SOCAL AUTO GROUP makes no representations or warranties, expressed or implied, to any actual or prospective purchaser or owner of any vehicle as to the existence, ownership, or condition of the vehicle or as to the accuracy or completeness of any information about the vehicle contained in this service. SOCAL AUTO GROUP reserves the right to terminate any product or price at any time, in its sole discretion. You acknowledge that any reliance upon any such materials shall be at your sole risk. SOCAL AUTO GROUP reserves the right, in its sole discretion, to correct any error or omission in any portion of the service or materials. Any and all concerns, differences, or discrepancies must be addressed with the SOCAL AUTO GROUP prior to the sale of the vehicle. While we try to make sure that all prices, information, etc. posted are accurate at all times, we cannot be responsible for typographical and other errors that may appear on the site. If the posted price, information, etc. for a vehicle or service is incorrect due to typographical or other error (e.g., data transmission), this dealership is NOT responsible. If we discover a mistake, error, etc. we will endeavor to provide the correction to you as soon as we become aware of it. We make every effort to provide you the most accurate, up-to-the-minute information, however it is your responsibility to verify with our dealership that all of the details listed are accurate. Vehicle images and descriptions posted on our website pages are only representations provided for additional information purposes only and should not in any way be considered as factual and final. Please note that the actual vehicle may differ slightly from specifications and/or the pictures. Our dealership is not responsible for typographical, pricing, product information, advertising or other errors. Advertised prices, information, etc. are subject to change without notice. In the event a vehicle is listed at an incorrect price due to typographical, photographic, technical error, or other error, our dealership shall have the right to refuse or cancel any orders placed for the vehicle listed at the incorrect price. You agree to release, hold harmless and indemnify SOCAL AUTO GROUP from any and all liability arising from incorrect or incomplete information regarding any vehicle. SOCAL AUTO GROUP specifically disclaims any implied warranties, including the warranties of merchantability and fitness for a particular purpose regarding any vehicle with information provided in this service. All vehicles are subject to prior sales. General Disclaimer and Limitation of Liability: YOU EXPRESSLY AGREE THAT USE OF SOCAL AUTO GROUP WEB SITE IS AT YOUR OWN RISK. NEITHER SOCAL AUTO GROUP, NOR ANY OF ITS EMPLOYEES, AGENTS, ASSIGNS, CONTENT PROVIDERS OR LICENSORS MAKES ANY REPRESENTATIONS OR WARRANTIES OF ANY KIND REGARDING THE SERVICE, THE CONTENT, ANY ADVERTISING MATERIAL OR THE RESULTS THAT MAY BE OBTAINED FROM USE OF THE SERVICE. THE SERVICE IS PROVIDED ON AN "AS-IS" BASIS AND SOCAL AUTO GROUP SPECIFICALLY DISCLAIMS ANY EXPRESS OR IMPLIED WARRANTIES, INCLUDING WITHOUT LIMITATION, WARRANTIES OF FITNESS FOR A PARTICULAR PURPOSE, WARRANTIES OF MERCHANTABILITY OR WARRANTIES AGAINST INFRINGEMENT AS ALLOWED BY LAW. SOCAL AUTO GROUP, ITS AFFILIATES, EMPLOYEES, AGENTS, CONTENT PROVIDERS AND LICENSORS SHALL IN NO EVENT BE LIABLE FOR ANY DAMAGES OR LOSSES, INCLUDING, WITHOUT LIMITATION, DIRECT, INDIRECT, CONSEQUENTIAL, SPECIAL, INCIDENTAL OR PUNITIVE DAMAGES, RESULTING FROM OR CAUSED BY THE SERVICE OR ITS CONTENT, INCLUDING, WITHOUT LIMITATION, LOSSES RELATED TO: YOUR USE OR INABILITY TO USE THE SERVICE; ANY ERRORS, OMISSIONS OR DEFECTS IN THE CONTENT; OR ANY INTERRUPTIONS, DELAYS IN TRANSMISSION OR COMPUTER VIRUSES. Indemnification: Upon a request by SOCAL AUTO GROUP, you agree to defend, indemnify, and hold harmless SOCAL AUTO GROUP and its subsidiary and other affiliated companies, and their employees, contractors, officers, and directors from all liabilities, claims, and expenses, including attorney's fees, that arise from your use or misuse of this site. SOCAL AUTO

GROUP reserves the right, at its own expense, to assume the exclusive defense and control of any matter otherwise subject to indemnification by you, in which event you will cooperate with SOCIAL AUTO GROUP in asserting any available defenses. SOCIAL AUTO GROUP makes no representation that materials on this site are appropriate or available for use in locations outside the United States or the State of California, and accessing them from states or territories where their contents are illegal is prohibited. Those who choose to access this site from other locations do so on their own initiative and are responsible for compliance with local laws. Unless otherwise specified herein, this agreement constitutes the entire agreement between you SOCIAL AUTO GROUP with respect to this site and supersedes all prior or contemporaneous communications and proposals (whether oral, written, or electronic) between you and SOCIAL AUTO GROUP with respect to this site. If any part of the Terms of Use is held invalid or unenforceable, that portion shall be construed in a manner consistent with applicable law to reflect, as nearly as possible, the original intentions of the parties, and the remaining portions shall remain in full force and effect.

SoCal Auto Group
socalautogroup.com
3235403249
6955 Reseda Blvd
Reseda, CA 91335
© 2024 AutoRevo - All rights reserved. - Powered by AutoRevo