

2019 Ford Expedition XLT

View this car on our website at shepherdlm.com/7258502/ebrochure



Our Price **\$33,500**

Specifications:

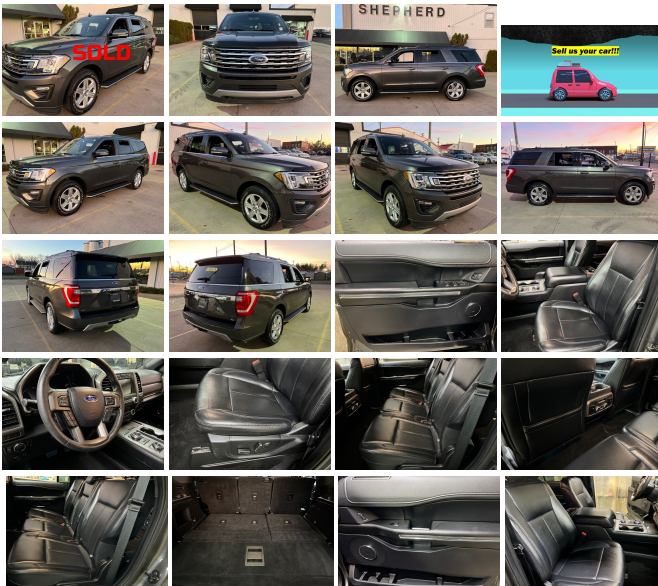
Year:	2019
VIN:	1FMJU1JT9KEA10874
Make:	Ford
Stock:	30593
Model/Trim:	Expedition XLT
Condition:	Pre-Owned
Body:	SUV
Exterior:	Gray
Engine:	EcoBoost 3.5L Twin Turbo V6 375hp 470ft. lbs.
Interior:	Cloth
Transmission:	10-Speed Shifttable Automatic
Mileage:	65,184
Drivetrain:	4 Wheel Drive
Economy:	City 17 / Highway 22

Clean CARFAX.

Gray 2019 Ford Expedition XLT 4WD 10-Speed Automatic EcoBoost 3.5L V6 GTDi DOHC 24V Twin Turbocharged 1st & 2nd Row Floor Liners.

Odometer is 14740 miles below market average!

Don't wait. Stop in today or call (586) 727-3885 to schedule a test drive. 77 years and going strong!!



2019 Ford Expedition XLT

Shepherd Sales & Service - (586) 727-3885 - View this car on our website at shepherdlm.com/7258502/ebrochure

Vehicle History Report : as Of 05/09/2024

CARFAX

Snapshot

2019 FORD EXPEDITION XLT



No accidents or damage reported to CARFAX



5 Service history records



At least 1 open recall



3 Previous owners



Types of owners: Personal lease, Personal



65,184 Last reported odometer reading



FREE CARFAX Report

See the full CARFAX Report for additional information

*carfax Snapshot is a reflection of available information on the date the report was pulled. carfax is constantly being updated with new information and is subject to change at any time.

Our Location :



2019 Ford Expedition XLT

Shepherd Sales & Service - (586) 727-3885 - View this car on our website at shepherdlm.com/7258502/ebrochure

Installed Options

Interior

- Air filtration- Front air conditioning: automatic climate control
- Front air conditioning zones: dual- Rear air conditioning: automatic climate control
- Rear vents: third row- Floor mat material: carpet- Floor mats: front
- Steering wheel trim: leather- Capless fuel filler system- Cargo area light
- Conversation mirror- Cruise control- Keypad entry- Multi-function remote: keyless entry
- Power outlet(s): 12V cargo area- Power steering: variable/speed-proportional
- Push-button start- Rearview mirror: auto-dimming- Steering wheel: tilt and telescopic
- Universal remote transmitter: garage door opener- Clock- Digital odometer
- External temperature display- Multi-function display- Trip odometer
- Driver seat power adjustments: 8- Front seat type: bucket- Rear seat folding: flat
- Rear seat type: 40-20-40 split bench- Third row seat folding: fold flat into floor
- Third row seat type: 40-60 split bench- Upholstery: cloth

Exterior

- Front bumper color: body-color- Mirror color: body-color- Running boards
- Daytime running lights- Exterior entry lights: approach lamps- Front fog lights
- Side mirrors: heated- Roof rails: black- Spare wheel type: steel
- Tire Pressure Monitoring System- Wheels: aluminum alloy with painted accents
- Heated windshield wiper rests- Laminated glass: acoustic- Liftgate window: manual flip-up
- Power windows: safety reverse- Rear privacy glass- Rear wiper: intermittent
- Solar-tinted glass: front- Window defogger: rear

Shepherd Sales & Service

shepherdsm.com

(586) 727-3885

68200 Grand Trunk

Richmond, MI 48062

© 2024 AutoRevo - All rights reserved. - Powered by AutoRevo