

2020 Chevrolet Malibu LS

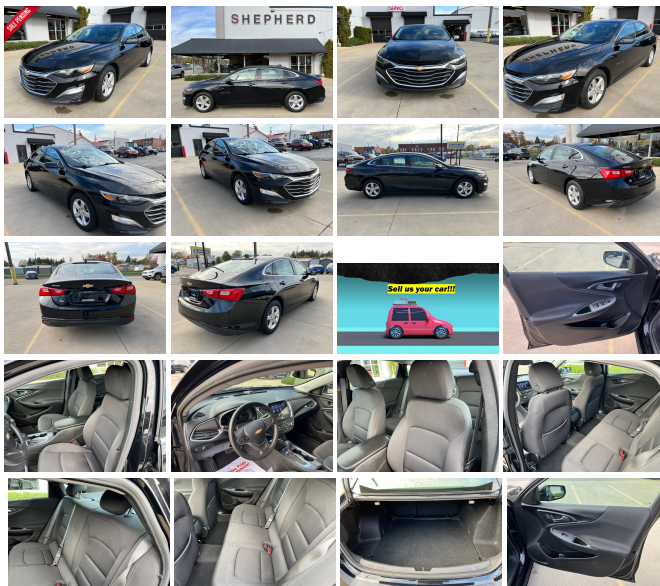
View this car on our website at shepherdllm.com/7251788/ebrochure



Our Price **\$14,800**

Specifications:

Year:	2020
VIN:	1G1ZC5ST3LF110179
Make:	Chevrolet
Stock:	30583
Model/Trim:	Malibu LS
Condition:	Pre-Owned
Body:	Sedan
Exterior:	Mosaic Black Metallic
Engine:	Ecotec 1.5L Turbo I4 160hp 184ft. lbs.
Interior:	Jet Black Cloth
Transmission:	CVT
Mileage:	110,314
Drivetrain:	Front Wheel Drive
Economy:	City 29 / Highway 36



Step into the world of luxury and performance with the 2020 Chevrolet Malibu LS Fleet! This stunning vehicle, cloaked in a sleek black exterior, is an absolute head-turner on the roads. Its black cloth interior radiates an air of elegance and sophistication that will surely impress anyone who steps inside.

Under the hood of this magnificent beast lies an Ecotec 1.5L Turbo I4 160hp 184ft. lbs. engine. This powerhouse of an engine gives you an exhilarating 160 horsepower and 184 ft-lbs of torque, ensuring that you have the power and performance at your fingertips whenever you need it. Whether you're cruising down the highway or navigating city streets, the Malibu LS Fleet is always ready to deliver an exceptional driving experience.

The vehicle's Continuously Variable Transmission (CVT) ensures a smooth and efficient ride, enabling seamless gear changes and improving fuel efficiency. This cutting-edge transmission technology makes every journey as comfortable and effortless as possible, providing you with a driving experience that's second to none.

The 2020 Chevrolet Malibu LS Fleet comes packed with manufacturer options and packages that are designed to enhance your driving experience. These features not only add to the vehicle's comfort and convenience but also contribute to its impressive performance and safety.

But don't just take our word for it. The 2020 Chevrolet Malibu LS Fleet is a multi-award-winning vehicle, having been recognized as a top model in J.D. Power and Associates Vehicle Dependability Study (VDS) not once, but twice! This prestigious accolade is a testament to the

Malibu's exceptional reliability and long-lasting performance, giving you peace of mind for every journey.

Furthermore, the Malibu LS Fleet has also been ranked highest in J.D. Power and Associates Initial Quality Study (IQS). This award recognizes vehicles that have the fewest problems reported by 100 car owners during the first 90 days of ownership. This means you can be confident that the Malibu LS Fleet is not just a high-performing vehicle, but also one that is built to the highest standards of quality and craftsmanship.

In conclusion, the 2020 Chevrolet Malibu LS Fleet is a perfect blend of style, performance, and reliability. Its striking black exterior, luxurious black cloth interior, powerful Ecotec engine, and award-winning quality make it the ultimate choice for those who demand the best. Don't miss out on the opportunity to own this exceptional vehicle. Experience the thrill of the 2020 Chevrolet Malibu LS Fleet today!

2020 Chevrolet Malibu LS

Shepherd Sales & Service - (586) 727-3885 - View this car on our website at shepherdlm.com/7251788/ebrochure

Vehicle History Report : as Of 05/08/2024



Snapshot

2020 CHEVROLET MALIBU LS FLEET



No accidents or damage reported to CARFAX



18 Service history records



2 Previous owners



Types of owners: Commercial, Personal



Last owned in Michigan



110,314 Last reported odometer reading



FREE CARFAX Report

See the full CARFAX Report for additional information

*carfax Snapshot is a reflection of available information on the date the report was pulled. carfax is constantly being updated with new information and is subject to change at any time.

Our Location :



2020 Chevrolet Malibu LS

Shepherd Sales & Service - (586) 727-3885 - View this car on our website at shepherdlm.com/7251788/ebrochure

Installed Options

Interior

- Air filtration- Front air conditioning- Floor mat material: carpet- Floor mats: front
- Capless fuel filler system- Cargo area light- Cruise control- Power outlet(s): 12V front
- Power steering- Push-button start- Steering wheel: tilt and telescopic- Clock- Compass
- Digital odometer- External temperature display- Multi-function display- Trip odometer
- Front seat type: bucket - Rear seat folding: split- Rear seat type: 60-40 split bench
- Upholstery: premium cloth

Exterior

- Front bumper color: body-color- Grille color: black with chrome accents
- Daytime running lights- Spare wheel type: steel- Tire Pressure Monitoring System
- Wheels: aluminum alloy- Front wipers: variable intermittent- Laminated glass: acoustic
- Power windows: safety reverse- Solar-tinted glass- Window defogger: rear