

racperformance.com  
214-269-1570  
3221 Skylane Dr.  
Carrollton, TX 75006

RAC Performance

## 2012 Porsche 911 Carrera S

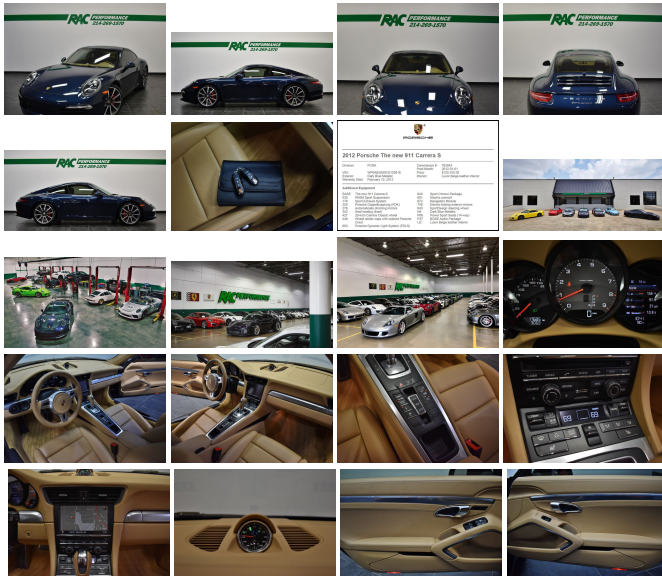
View this car on our website at [racperformance.com/7251020/ebrochure](http://racperformance.com/7251020/ebrochure)



Our Price **\$0**

**Specifications:**

**Year:** 2012  
**VIN:** WP0AB2A99CS120816  
**Make:** Porsche  
**Stock:** R3276  
**Model/Trim:** 911 Carrera S  
**Condition:** Pre-Owned  
**Body:** Coupe  
**Exterior:** [N4] Dark Blue Metallic  
**Engine:** 3.8L H6 400hp 325ft. lbs.  
**Interior:** Tan Leather  
**Transmission:** 7-Speed Double Clutch  
**Mileage:** 17,675  
**Drivetrain:** Rear Wheel Drive



CLEAN CARFAX, PORSCHE DOPPELKUPPLUNG (PDK), SPORT CHRONO PACKAGE, SPORT EXHAUST SYSTEM, PASM SPORT SUSPENSION, FRESH INTERMEDIATE SERVICE, FULL-FRONT CLEAR-BRA (W/ EXTENDED ROCKERS + REAR BUMPER), 4 NEW TIRES, BOSE AUDIO PACKAGE, SPORTDESIGN STEERING WHEEL, PORSCHE DYNAMIC LIGHT SYSTEM (PDLS), ELECTRIC SUNROOF, NAVIGATION MODULE ELECTRIC FOLDING EXTERIOR MIRRORS, AUTOMATICALLY DIMMING MIRRORS, SEAT HEATING (FRONT), POWER SPORT SEATS (14-WAY) LUXOR BEIGE LEATHER INTERIOR, 20-INCH CARRERA CLASSIC WHEEL, WHEEL CENTER CAPS WITH COLORED PORSCHE CREST, DARK BLUE METALLIC!!! This car has been inspected by our certified technicians and is ready to drive home. Upgrades are available at RAC Performance. TUNES, EXHAUST, WHEELS, TIRES and MORE!

Contact our professional sales staff at 214-269-1575 for any questions or additional information. We also offer competitive finance rates as low as 5.9%.

We hand pick only the finest automobiles to sell and every vehicle gets a rigorous internal inspection by our certified technicians. At our 9000 square foot state of the art facility, RAC Performance offers service on Porsche, RUF, Ferrari, Maserati and Lamborghini models. We offer dealership quality service and repairs at competitive prices and only sell the finest vehicles! RAC Performance cannot guarantee the availability of vehicle books/manuals, additional keys, or additional accessories with vehicle purchase, unless otherwise stated in the vehicle description or by an RAC sales professional.

Stop by and check out our state-of-the-art Service Department, Performance Shop and Huge 32,000 square foot Indoor Showroom!

We facilitate door-to-door shipping to anywhere in the world at an affordable price.

[www.RACPerformance.com](http://www.RACPerformance.com)

Vehicle History Report : as Of 04/27/2024



Snapshot

2012 PORSCHE 911 CARRERA S



No accidents or damage reported to CARFAX



12 Service history records



2 Previous owners



Types of owners: Personal lease  
Personal



Last owned in New Jersey



17,695 Last reported odometer reading



**FREE CARFAX Report**

See the full CARFAX Report for additional information

\*carfax Snapshot is a reflection of available information on the date the report was pulled. carfax is constantly being updated with new information and is subject to change at any time.

Our Location :



2012 Porsche 911 Carrera S

RAC Performance - 214-269-1570 - View this car on our website at [racperformance.com/7251020/ebrochure](http://racperformance.com/7251020/ebrochure)

## Installed Options

### Interior

- Air filtration: active charcoal- Front air conditioning: automatic climate control
- Front air conditioning zones: dual- Center console trim: leather- Dash trim: leather
- Door trim: leather- Floor mat material: carpet- Floor mats: front- Shift knob trim: alloy
- Steering wheel trim: leather- Cargo area light- Cruise control
- Multi-function remote: keyless entry- Power outlet(s): 12V
- Power steering: variable/speed-proportional- Steering wheel: tilt and telescopic
- Universal remote transmitter: garage door opener- External temperature display
- Trip odometer- Driver seat: heated- Front seat type: sport bucket
- Passenger seat: heated- Rear seat folding: split- Rear seat type: bucket
- Upholstery: leather

### Exterior

- Exhaust: dual tip- Front bumper color: body-color- Mirror color: body-color- Rear spoiler
- Daytime running lights- Front fog lights- Headlight cleaners- Rear fog lights
- Side mirror adjustments: power- Side mirrors: heated- Tire Pressure Monitoring System
- Wheels: aluminum alloy- Front wipers: rain sensing- Heated windshield washer jets
- Power windows- Window defogger: rear

## Option Packages

### Factory Installed Packages

#### Navigation Module For PCM

Include GPS navigation module with extended navigation. (Extended navigation includes dynamic route calculation, automatic route recording, back track navigation, and facilitates navigation in unmapped areas.)

\$2,110

#### Automatically Dimming Mirrors

\$420

#### Bi-Xenon Headlights with PDLs

Includes Porsche Dynamic Light System.

\$690

#### Dark Blue Metallic Paint

\$710

#### Wheel Caps w/Colored Crest

\$185

#### Heated Front Seats

Includes multi-stage heated front seats.

\$525

#### Sport Chrono Package

Includes analog and digital chronometer, performance display in the PCM and ability to adjust lighting, wipers, air conditioning and door locking to suit personal preference.

\$960

#### PASM Sports Suspension

Includes ride height lowered by 20mm, stiffer springs, shock absorbers and anti-roll bars. Recommended in conjunction with 18-inch wheels.

\$2,090

#### Sport Exhaust System

Includes modified silencers with a pair of dual tube, chrome plated tailpipes and an integrated switch in PCM panel.

\$2,810

#### Option Packages Total

\$10,500

RAC Performance  
[racperformance.com](http://racperformance.com)  
214-269-1570  
3221 Skylane Dr.  
Carrollton, TX 75006

© 2024 AutoRevo - All rights reserved. - Powered by AutoRevo