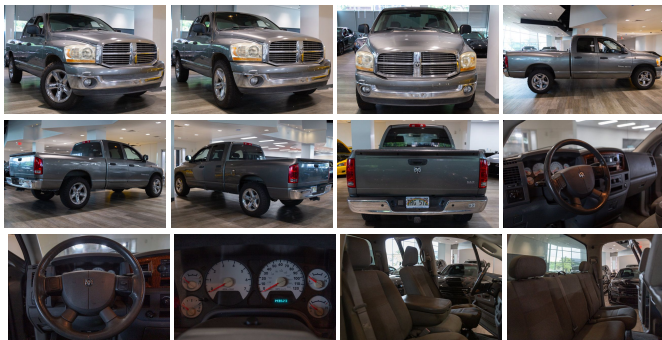


## 2006 Dodge Ram 1500 SLT

View this car on our website at [autosourcehawaii.com/7247813/ebrochure](http://autosourcehawaii.com/7247813/ebrochure)



Our Price **\$14,995**

Retail Value **\$16,995**

### Specifications:

<b>Year:</b>	2006
<b>VIN:</b>	1D7HA18N16S597846
<b>Make:</b>	Dodge
<b>Stock:</b>	6S597846
<b>Model/Trim:</b>	Ram 1500 SLT
<b>Condition:</b>	Pre-Owned
<b>Body:</b>	Pickup Truck
<b>Exterior:</b>	Mineral Gray Metallic
<b>Engine:</b>	4.7L V8 235hp 300ft. lbs.
<b>Interior:</b>	Medium Slate Gray
<b>Transmission:</b>	5-Speed Automatic
<b>Mileage:</b>	143,595
<b>Drivetrain:</b>	Rear Wheel Drive
<b>Economy:</b>	City 11 / Highway 14

Step into the realm of robust performance and undeniable reliability with this iconic 2006 Dodge Ram 1500 SLT. A true testament to American engineering, this pickup truck is not just a vehicle; it's a powerhouse companion ready to take on any challenge. With 143,595 miles on the odometer, this Ram has been meticulously maintained and is poised to deliver countless more miles of loyal service.

The exterior of this Ram 1500 is draped in a sleek, gray coat that exudes a sense of strength and sophistication. The chrome front bumper shines with pride, hinting at the rugged capabilities within. The pickup bed light ensures that your cargo is always visible, no matter the time of day, making loading and unloading a breeze.

Slide into the spacious gray interior, where comfort meets functionality. The split-bench front seat offers a welcoming embrace after a long day's work, while the power steering and power outlet(s) at the front ensure that you're always in control and connected. The clock and powertrain hour meter keep you punctual and informed about your vehicle's performance, allowing you to focus on the road ahead.

Under the hood lies the heart of this beast – a 4.7L V8 engine that churns out an impressive 235hp and 300 ft. lbs. of torque. Paired with a smooth-shifting 5-Speed Automatic transmission, this Ram delivers a driving experience that is both exhilarating and efficient. Whether you're towing, hauling, or simply cruising down the highway, this powertrain ensures you have the muscle when you need it most.

Safety is paramount in the 2006 Dodge Ram 1500 SLT. Equipped with child safety door locks, electronic brakeforce distribution, and front

airbags: dual, you can drive with peace of mind knowing your precious cargo is protected. The rear brake type: disc and front brake type: ventilated disc provide superior stopping power, giving you confidence in all driving conditions.

For those who live for the weekend adventures, the trailer wiring feature is a godsend, allowing you to effortlessly connect your trailer for a getaway or transport your gear to the next big job. The front stabilizer bar ensures that your ride remains stable and smooth, no matter the load or the road.

It's no surprise that this Dodge Ram 1500 SLT was listed among Edmunds's Top 10 Best-Selling Vehicles. It's a vehicle that resonates with the hardworking spirit of its owners, a symbol of durability, and an embodiment of American craftsmanship.

Don't miss your chance to own a piece of automotive excellence. This 2006 Dodge Ram 1500 SLT is more than just a truck – it's a loyal partner, a workhorse, and a statement. Come see for yourself why this Ram stands out from the crowd. It's not just about getting from point A to point B; it's about the journey, the experience, and the satisfaction of owning a vehicle that can truly do it all. Your adventure awaits – take the wheel of this legendary Dodge Ram 1500 SLT today!

2006 Dodge Ram 1500 SLT

Autosource Hawaii - (808) 597-8522 - View this car on our website at [autosourcehawaii.com/7247813/ebrochure](https://autosourcehawaii.com/7247813/ebrochure)

#### Vehicle History Report : as Of 05/08/2024

**CARFAX**

Snapshot

**2006 DODGE RAM 1500 SLT**



Damage reported



13 Service history records



At least 1 open recall



8 Previous owners



Types of owners: Commercial, Personal



143,595 Last reported odometer reading



**FREE CARFAX Report**

See the full CARFAX Report for additional information

\*carfax Snapshot is a reflection of available information on the date the report was pulled. carfax is constantly being updated with new information and is subject to change at any time.

#### Our Location :



## Installed Options

### Interior

- Cupholders- Power outlet(s): front- Power steering- Clock- Powertrain hour meter
- Front seat type: split-bench

### Exterior

- Front bumper color: chrome- Pickup bed light